



**Price**  
**£325,000**

**Freehold**

3x  1x  1x 

**Whitmore Way,  
Basildon, Essex, SS14**

**OVER 60?**

Secure this property  
for up to **59% less!**

 **DOUGLAS  
ALLEN**  
Helping you move forwards





## Main features

- Located within walking distance to Basildon town centre and mainline station into London Fenchurch Street
- Driveway parking
- 3 bedroom end of terraced house
- Plenty of living space on ground floor with large kitchen/diner and lounge

## Accommodation

### GROUND FLOOR

Entrance Hallway

Kitchen/Dining Area: 21'2 x 7'5 (6.46m x 2.26m)

Lounge: 21'1 x 10'6 (6.43m x 3.20m)

Conservatory: 12'1 x 8'0 (3.69m x 2.44m)

### FIRST FLOOR

Landing

Bedroom 1: 11'6 x 10'9 (3.51m x 3.28m)

Bedroom 2: 12'6 x 9'4 (3.81m x 2.85m)

Bedroom 3: 10'2 x 6'4 (3.10m x 1.93m)

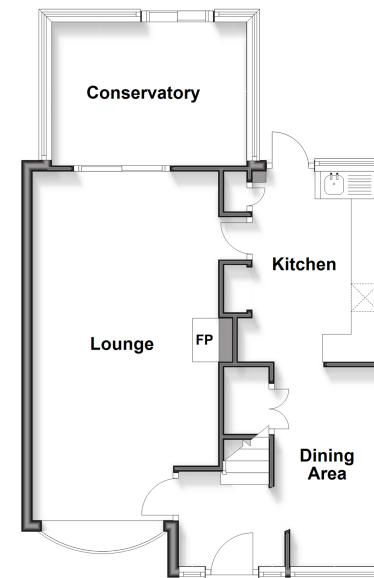
Shower Room

### OUTSIDE

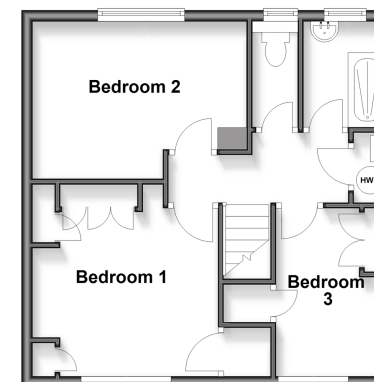
Driveway Parking

Rear Garden

**Ground Floor**  
Approx. 31.9 sq. metres (343.6 sq. feet)



**First Floor**  
Approx. 41.2 sq. metres (443.1 sq. feet)



**Call Basildon - 01268 293993 ■ [douglasallen.co.uk](http://douglasallen.co.uk)**

- Legal advice should be taken to verify fixtures/fittings, planning, alterations and/or lease details
- Appliances & services are untested, dimensions are approximate and floor plans are not to scale
- Through a Homewise Home For Life Plan people aged 60+ can secure this property for up to 59% less, by purchasing a Lifetime Lease.



50509035/20250301/MB/GW