



**OVER 60?**

Secure this property  
for up to **59% less!**

**Guide Price**

**£300,000**

**Freehold**

3x  1x  1x 

**Exeter Close, Basildon,  
Essex, SS14**

 **DOUGLAS  
ALLEN**  
Helping you move forwards





## Main features

- 3 bedroom well presented terraced house
- Close to local amenities and transport links
- Front and rear gardens
- Open plan kitchen/lounge and dining area
- Located in the popular Fryerns area

## Accommodation

### GROUND FLOOR

Entrance Hallway

Lounge/Kitchen/Dining Area: 24'2 x 17'7 (7.37m x 5.36m)

### FIRST FLOOR

Landing

Bedroom 1 : 13'7 x 8'7 (4.14m x 2.62m)

Bedroom 2: 9'6 x 7'9 (2.90m x 2.36m)

Bedroom 3: 9'5 x 6'6 (2.87m x 1.98m)

Bathroom

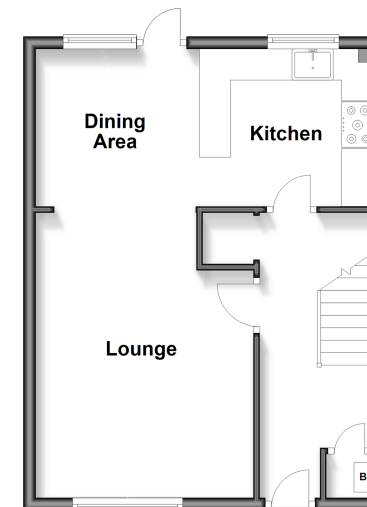
### OUTSIDE

Front Garden

Rear Garden

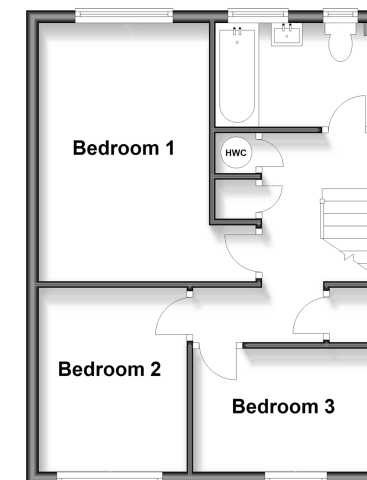
### Ground Floor

Approx. 39.1 sq. metres (420.8 sq. feet)



### First Floor

Approx. 39.1 sq. metres (420.8 sq. feet)



**Call Basildon - 01268 293993 ■ [douglasallen.co.uk](http://douglasallen.co.uk)**

- Legal advice should be taken to verify fixtures/fittings, planning, alterations and/or lease details
- Appliances & services are untested, dimensions are approximate and floor plans are not to scale
- Through a Homewise Home For Life Plan people aged 60+ can secure this property for up to 59% less, by purchasing a Lifetime Lease.



50507963/20250314/GW/AA