



**Price**  
**£425,000**

**Freehold**

3x  2x  2x 

**The Hatherley, Basildon,  
Essex, SS14**

**OVER 60?**

Secure this property  
for up to **59% less!**

 **DOUGLAS  
ALLEN**  
Helping you move forwards





## Main features

- Must see 3 bedroom terraced house
- Exceptionally large rear extension
- Perfect family home with outdoor summer house
- Ground floor shower room
- Driveway parking
- Close to Basildon town centre and mainline station

## Accommodation

### GROUND FLOOR

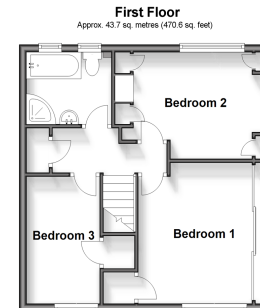
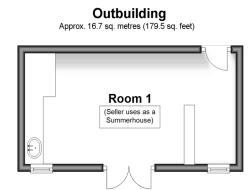
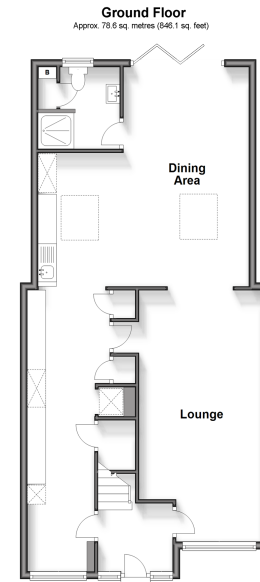
Entrance Hallway  
 Kitchen: 17'6 x 6'1 (5.34m x 1.86m)  
 Lounge: 15'6 x 12'1 (4.73m x 3.69m)  
 Dining Area: 19'0 x 18'8 (5.80m x 5.69m)  
 Shower Room

### FIRST FLOOR

Landing  
 Bedroom 1: 12'3 x 8'8 (3.74m x 2.64m)  
 Bedroom 2: 12'4 x 9'4 (3.76m x 2.85m)  
 Bedroom 3: 10'5 x 6'6 (3.18m x 1.98m)  
 Bathroom

### OUTSIDE

Rear Garden  
 Driveway  
 Outbuilding: 18'7 x 9'5 (5.67m x 2.87m)



**Call Basildon - 01268 293993 ■ [douglasallen.co.uk](http://douglasallen.co.uk)**

- Legal advice should be taken to verify fixtures/fittings, planning, alterations and/or lease details
- Appliances & services are untested, dimensions are approximate and floor plans are not to scale
- Through a Homewise Home For Life Plan people aged 60+ can secure this property for up to 59% less, by purchasing a Lifetime Lease.



50509131/20241207/MB/GW