



Price

£200,000

Leasehold

2x  1x  1x 

Long Gages, Basildon,  
Essex, SS14

**OVER 60?**

Secure this property  
for up to **59% less!**

 **DOUGLAS  
ALLEN**  
Helping you move forwards



## Main features

- Spacious 2 bedroom ground floor flat
- Communal garden space to the front and to the rear
- Permit parking
- Walking distance to Basildon mainline station and town centre

## Accommodation

### GROUND FLOOR

Entrance

Kitchen: 9'2 x 9'0 (2.80m x 2.75m)

Lounge/Dining Room : 14'7 x 13'2 (4.45m x 4.02m)

Wet Room

Bedroom 1: 12'3 x 8'6 (3.74m x 2.59m)

Bedroom 2: 14'4 x 9'4 (4.37m x 2.85m)

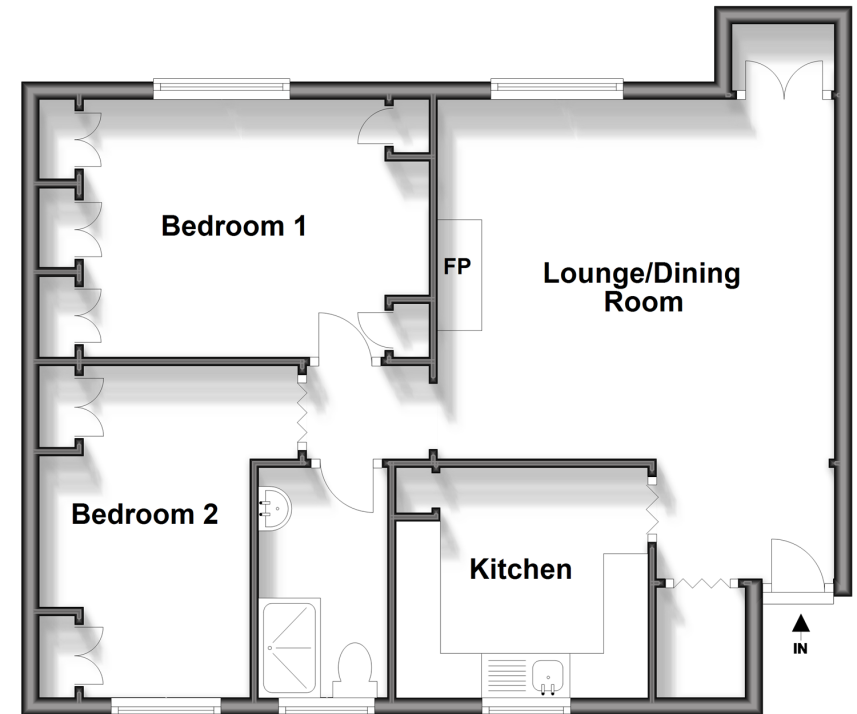
### OUTSIDE

Communal Gardens

Permit Parking

## Ground Floor

Approx. 60.2 sq. metres (647.7 sq. feet)



**Call Basildon - 01268 293993 ■ [douglasallen.co.uk](http://douglasallen.co.uk)**

- Legal advice should be taken to verify fixtures/fittings, planning, alterations and/or lease details
- Appliances & services are untested, dimensions are approximate and floor plans are not to scale
- Through a Homewise Home For Life Plan people aged 60+ can secure this property for up to 59% less, by purchasing a Lifetime Lease.



50508969/20241109/MB/GW