



Price
£325,000

Freehold

3x  1x  2x 

**Clayburn Circle,
Basildon, Essex, SS14**

OVER 60?

Secure this property
for up to **59% less!**

 **DOUGLAS
ALLEN**
Helping you move forwards



Main features

- 3 bedroom terraced house
- Good condition throughout
- Located close to Basildon town centre and train station
- Front and rear gardens
- Kitchen/dining area

Accommodation

GROUND FLOOR

Entrance Hallway
 Kitchen/Dining Area: 17'2 x 16'0 (5.24m x 4.88m)
 Storage : 10'0 x 5'0 (3.05m x 1.53m)
 Lounge: 16'4 x 10'0 (4.98m x 3.05m)
 WC

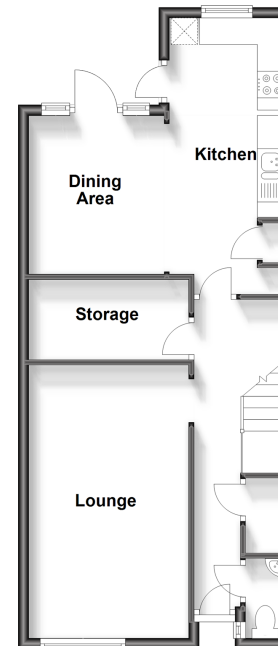
FIRST FLOOR

Landing
 Bedroom 1: 12'9 x 10'4 (3.89m x 3.15m)
 Bedroom 2: 10'9 x 10'3 (3.28m x 3.13m)
 Bedroom 3: 9'5 x 7'0 (2.87m x 2.14m)
 Bathroom

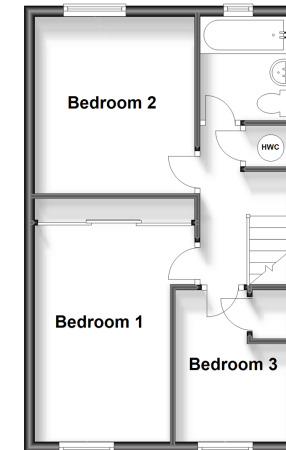
OUTSIDE

Front Garden
 Rear Garden

Ground Floor
 Approx. 50.8 sq. metres (546.8 sq. feet)



First Floor
 Approx. 36.3 sq. metres (390.5 sq. feet)



Call Basildon - 01268 293993 ■ douglasallen.co.uk

■ Legal advice should be taken to verify fixtures/fittings, planning, alterations and/or lease details
 ■ Through a Homewise Home For Life Plan people aged 60+ can secure this property for up to 59% less, by purchasing a Lifetime Lease.

■ Appliances & services are untested, dimensions are approximate and floor plans are not to scale



50503836/20240601/MB/GW