





Jim & Christine's
Albert Street
Huddersfield

Offers In Region Of £159,000

JIM AND CHRISTINES CAFE ALBERT STREET, HUDDERSFIELD. PRESENTED FOR SALE A UNIQUE OPPORTUNITY TO BUY AN ESTABLISHED CAFÉ WITH A SEPARATE FIRST FLOOR FLAT INCLUDED. BOTH THE BUSINESS AS WELL AS THE PROPERTY ARE FOR SALE. LOCATED IN AND AMONGST MANY HIGH DENSITY WORK PLACES OFFERING GREAT SCOPE TO INCREASE BUSINESS BY DOING DELIVERIES AND OUTSIDE CATERING. AN OPPORTUNITY TO RUN YOUR OWN CATERING BUSINESS. ALL FIXTURES AND FITTINGS INCLUDING CATERING EQUIPMENT INCLUDED. SEATING 8/9 PEOPLE.



Café KITCHEN

13'11 x 10'2 approx Complete with fixtures and fittings. The kitchen has full stainless steel work benches and twin bowl stainless sink.

BASEMENT

13'2 x 11'6 approx Ideal for storing non-perishables, cleaning equipment etc. with separate W.C. Comprising low-level WC. and wash hand basin.

UPSTAIRS FLAT

Separate front door with stairs leading up top the self contained flat.

SITTING ROOM

16'11 x 14'11 approx, with dual aspect double glazed windows and radiator

KITCHEN

14'3 x 10'4 Double glazed window to the side with fitted fire escape ladder.

SHOWER ROOM

3 piece suite including shower cubicle, wash hand basin and wc.

SECURITY

All of downstairs windows and doors have manual shutters well as two electric shutters on the two main café windows that can be operated from the inside. The premises is also fitted with CCTV inside and outside.

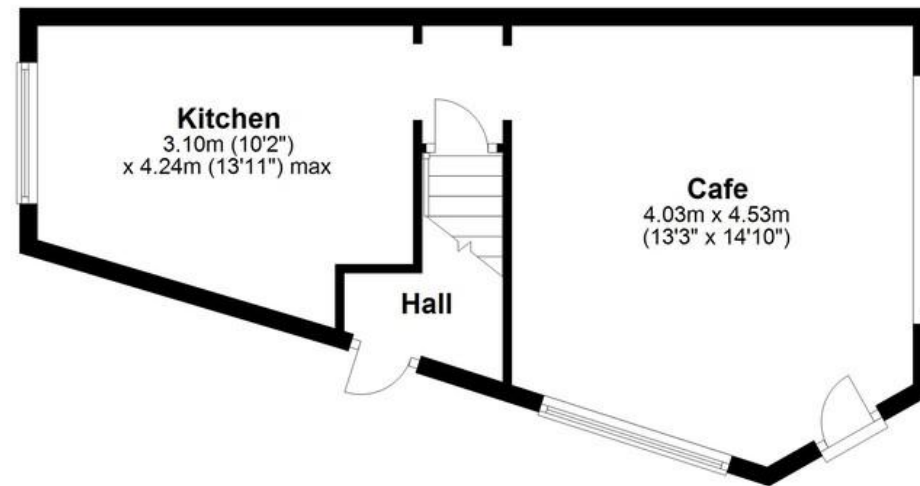
APPLIANCES INCLUDED

Kitchen: freestanding fridges, gas oven with 6 burner hob, double fryer, single fryer, display fridge, industrial slicer, Chest freezer, freestanding air conditioning unit.

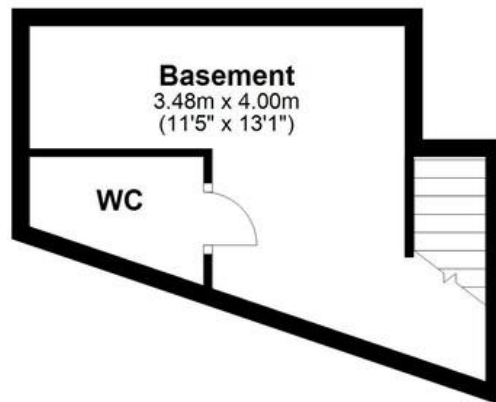
The café benefits from an alcohol license that can be transferred to the new owner if desired.



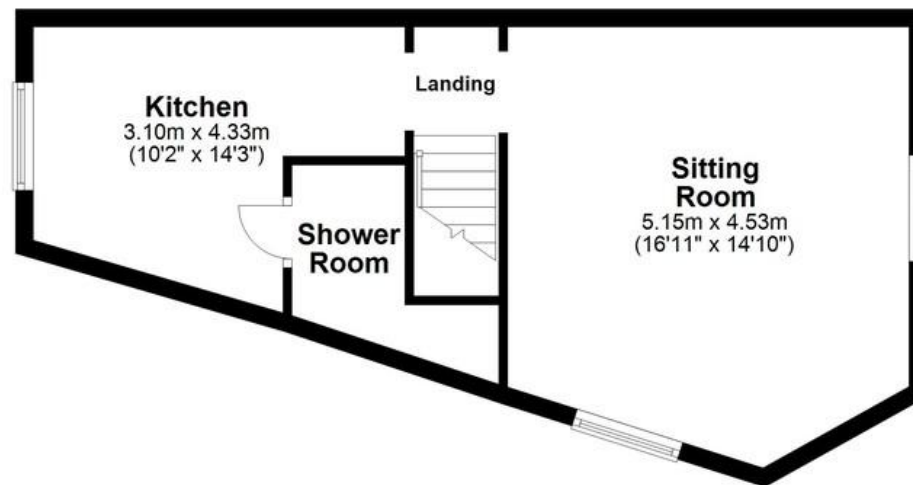
Approx. 37.8 sq. metres (407.4 sq. feet)



Approx. 14.8 sq. metres (158.8 sq. feet)



Approx. 37.6 sq. metres (404.3 sq. feet)



Total area: approx. 90.2 sq. metres (970.5 sq. feet)



599 Wakefield Road, Huddersfield, West Yorkshire, HD5 9XP
Telephone: 01484 428 336 Email: info@cornerstoneea.co.uk www.cornerstoneea.co.uk