

CHRISTIAN REID

ESTATE AGENTS



59 The Firs

£529,950

Cranleigh, GU6 8DX



3 Bedrooms



3 Receptions



1 Bathroom



Semi Detached



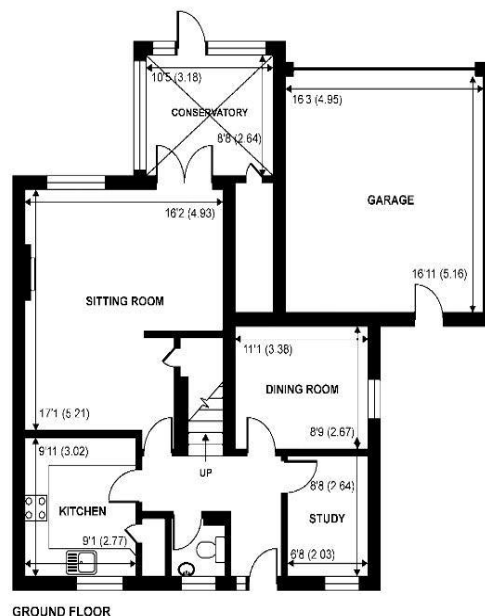
EPC: C



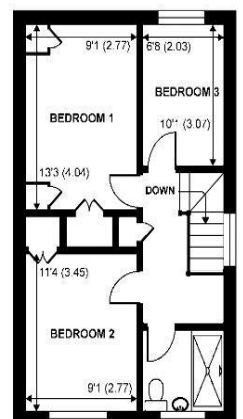
An Extended and Modernised Family Home set in a Well Sized Plot within Walking Distance of the Village. The Property offers a large Living Family Room with two further reception rooms, ideal as an extra guest bedroom, playroom or study. Downstairs also offers a Modern Kitchen plus Cloakroom, Conservatory and access to the Rear Garden with Driveway accessing the Horsham Road and a large Double Garage. Upstairs Benefits Two Double Bedrooms each with built in wardrobes, a third Single bedroom and a modern refitted Shower Room. The Property is offered with No onward Chain and is available for Viewings Now



Approximate Area = 1292 sq ft / 120 sq m  
Garage = 277 sq ft / 25.7 sq m  
Total = 1569 sq ft / 145.7 sq m  
For identification only - not to scale



GROUND FLOOR



FIRST FLOOR