

**Christian Reid**  
Estate Agents



**Cranleigh**

**£950pcm**

Knowle Lane, Cranleigh, GU6 8JP



1 Bedrooms



1 Receptions



1 Bathrooms

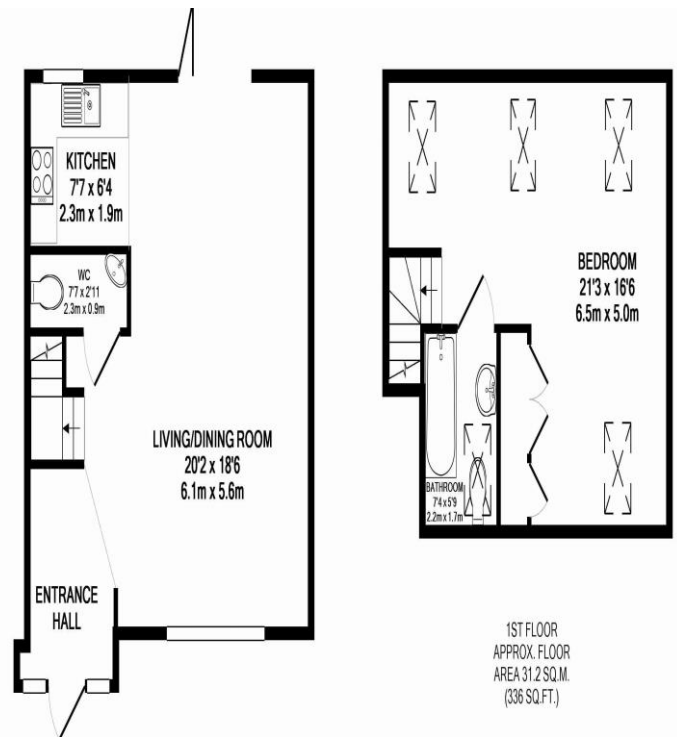
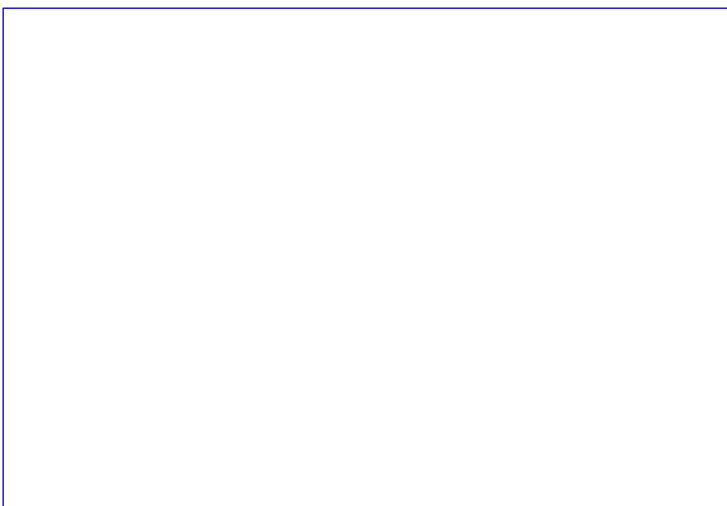
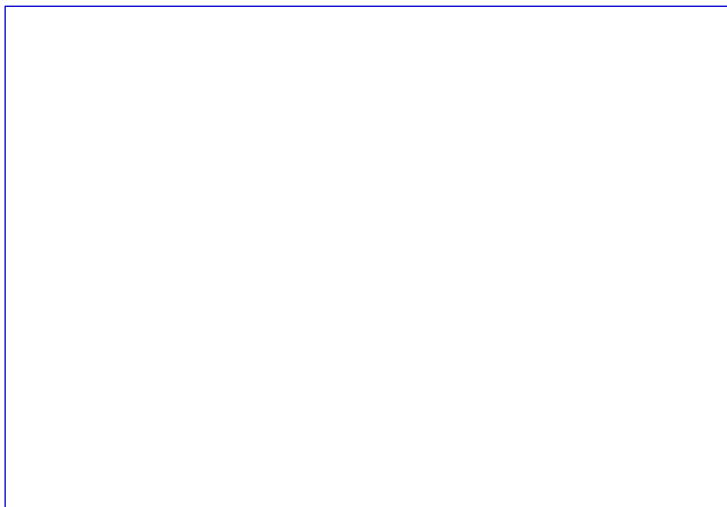


Barn



EPC: C

A Beautiful Barn Conversion Apartment in a rural location | Contemporary Kitchen with applicanes | Beautiful Bathroom with shower | Downstairs W/C | Large Living room | Main bathroom | Light and spacious | Brand new fixtures & fittings throughout | Allocated parking | Available end of March | Unfurnished



GROUND FLOOR  
APPROX. FLOOR  
AREA 41.1 SQ.M.  
(442 SQ.FT.)

1ST FLOOR  
APPROX. FLOOR  
AREA 31.2 SQ.M.  
(336 SQ.FT.)

TOTAL APPROX. FLOOR AREA 72.3 SQ.M. (778 SQ.FT.)

Whilst every attempt has been made to ensure the accuracy of the floor plan contained here, measurements of doors, windows, rooms and any other items are approximate and no responsibility is taken for any error, omission, or mis-statement. This plan is for illustrative purposes only and should be used as such by any prospective purchaser. The services, systems and appliances shown have not been tested and no guarantee as to their operability or efficiency can be given  
Made with Metropix ©2012