

Christian Reid
Estate Agents



Cranleigh

£1,650pcm

Mount Road, Cranleigh, GU6 7LT



3 Bedrooms



2 Receptions



1 Bathrooms

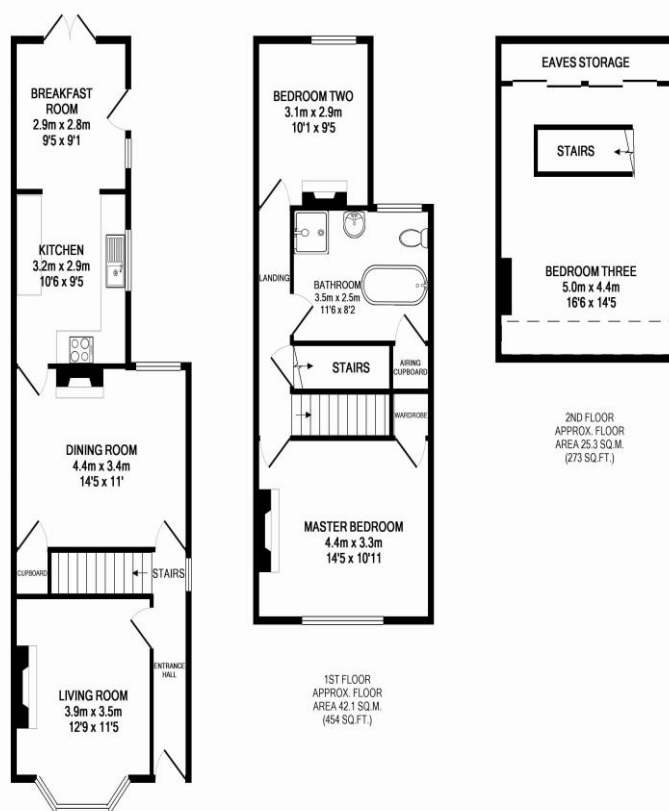


Semi



EPC:

A Rarely Available & Beautifully renovated Period House | Situated in one of Cranleighs most popular Tree Lined Roads | Two Reception Rooms | Extended Kitchen/Breakfast room | Three bedrooms | Large Bathroom | landscaped Gardens | Beautiful original features throughout | Available 1st September | Unfurnished



TOTAL APPROX. FLOOR AREA 118.9 SQ.M. (1280 SQ.FT.)
Whilst every attempt has been made to ensure the accuracy of the floor plan contained here, measurements of doors, windows, rooms and any other items are approximate and no responsibility is taken for any error, omission, or mis-statement. This plan is for illustrative purposes only and should be used as such by any prospective purchaser. The services, systems and appliances shown have not been tested and no guarantee as to their operability or efficiency can be given.
Made with Metropix 02015