

Christian Reid
Estate Agents



Cranleigh

£1,000pcm

Wyphurst Road, Cranleigh, GU6 7AX



2 Bedrooms



1 Receptions



1 Bathrooms

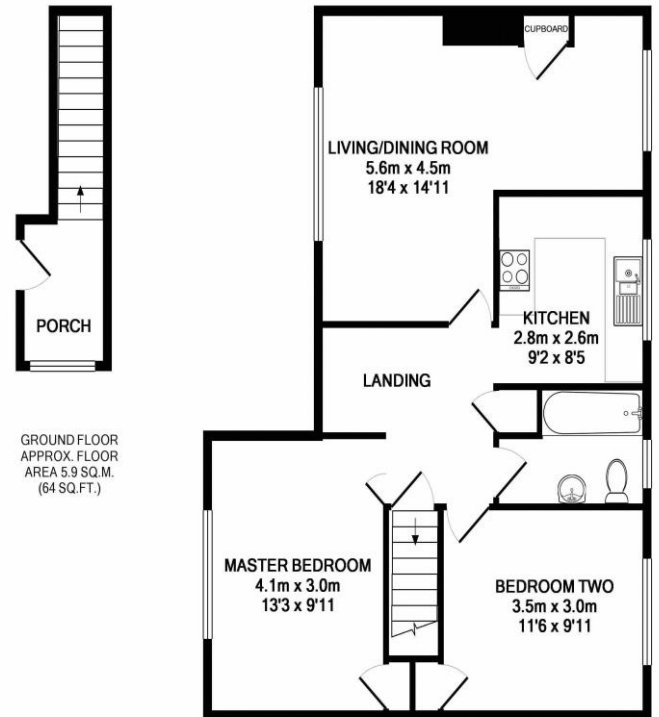


Maisonette



EPC: C

A Superbly Presented & Highly Sought After Maisonette | Two Double Bedrooms | Large Living/Dining Room | Modern Kitchen & Bathroom | First Floor | Large Rear Garden | Off Road Parking | GCH | Available mid October | Unfurnished



1ST FLOOR
APPROX. FLOOR AREA 63.9 SQ.M. (688 SQ.FT.)

TOTAL APPROX. FLOOR AREA 69.8 SQ.M. (751 SQ.FT.)

Whilst every attempt has been made to ensure the accuracy of the floor plan contained here, measurements of doors, windows, rooms and any other items are approximate and no responsibility is taken for any error, omission, or mis-statement. This plan is for illustrative purposes only and should be used as such by any prospective purchaser. The services, systems and appliances shown have not been tested and no guarantee as to their operability or efficiency can be given
Made with Metropix ©2019