

Christian Reid
Estate Agents



Horsham

£1,295pcm

Cissbury Close, Horsham, RH12 5JT



2 Bedrooms



1 Receptions



2 Bathrooms

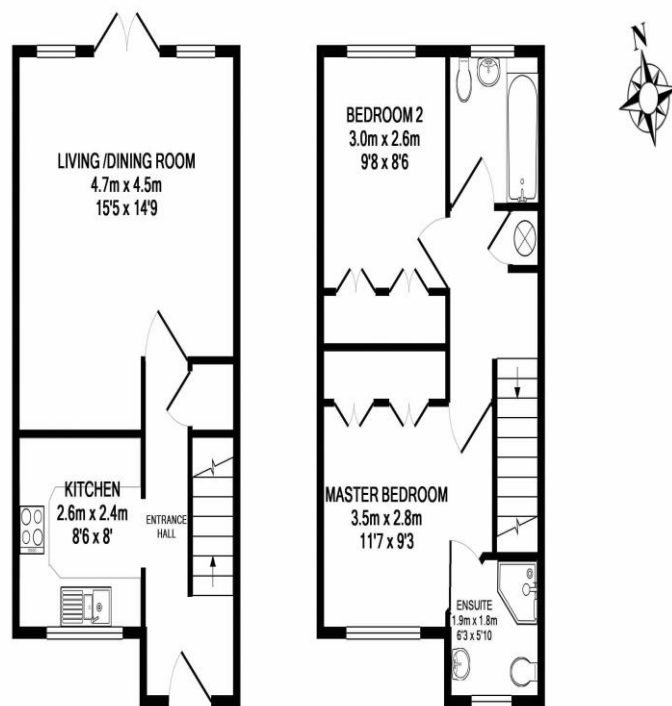


Terraced



EPC: C

A neat & tidy Two bedroom House in a Quiet Cul-de-sac | Walking distance to Littlehaven Station | Spacious Living/Dining Room | Master Bedroom with Ensuite Shower Room | Good size Second Bedroom | Private rear garden | Available early March | Unfurnished



GROUND FLOOR
APPROX. FLOOR
AREA 33.6 SQ.M.
(362 SQ.FT.)

1ST FLOOR
APPROX. FLOOR
AREA 33.6 SQ.M.
(362 SQ.FT.)

TOTAL APPROX. FLOOR AREA 67.2 SQ.M. (724 SQ.FT.)

Whilst every attempt has been made to ensure the accuracy of the floor plan contained here, measurements of doors, windows, rooms and any other items are approximate and no responsibility is taken for any error, omission, or mis-statement. This plan is for illustrative purposes only and should be used as such by any prospective purchaser. The services, systems and appliances shown have not been tested and no guarantee as to their operability or efficiency can be given

Made with Metropix ©2019