



49 Clappers Meadow £285,000

Alfold, GU6 8HJ



2 Bedrooms



2 Receptions



1 Bathrooms

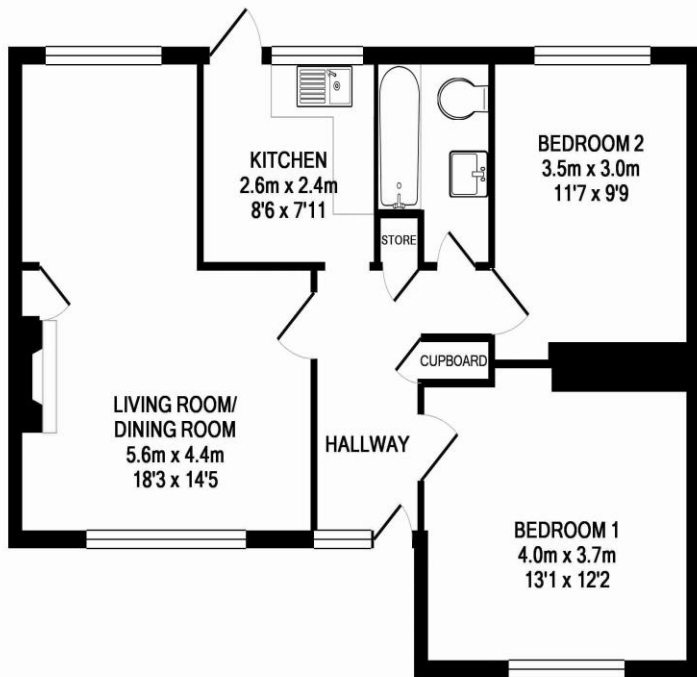


Ground Floor



EPC: D

GROUND FLOOR | 2 Double Bedrooms | Large Rear Garden & Private Front Garden | Modern Kitchen and Bathroom | Good Decorative Order | Parking | Impressive combined Living/dining room with log burning stove | Pretty Village Location Close to Cranleigh | Viewing Recommended An impressive two bedroom ground floor apartment with a large garden, situated in this pretty Surrey Village close to Cranleigh and ideally situated to commute to other areas. The property is presented in excellent decorative order and benefits from a modern kitchen and bathroom. The accommodation is generous and comprises two double bedrooms, a large combined Living/dining room with a log burning stove, kitchen and bathroom. Outside to the rear the garden is laid to lawn and enclosed with panel fencing. The front garden is private and bordered with mature hedging and trees. There is a gravelled driveway to the rear of the property with private parking. Access is granted annually through WBC with a license fee of £125.



TOTAL APPROX. FLOOR AREA 60.2 SQ.M. (648 SQ.FT.)

Whilst every attempt has been made to ensure the accuracy of the floor plan contained here, measurements of doors, windows, rooms and any other items are approximate and no responsibility is taken for any error, omission, or mis-statement. This plan is for illustrative purposes only and should be used as such by any prospective purchaser. The services, systems and appliances shown have not been tested and no guarantee as to their operability or efficiency can be given
Made with Metropix ©2014