



The Atelier Apartments 45-51 Sinclair Road, London, W14 0NS

£850,000

A 1 bedroom apartment for sale within this stylish boutique development development 'Atelier'

Surrounded by period properties on a tree lined residential street this development by 'Regal London' blends Victorian architecture with modern style and is located moments from Kensington Olympia and Kensington High Street

This 3rd floor apartment has an outlook over the communal gardens and comprises a spacious reception room, one double bedroom a luxury bathroom suite and benefits from a residents cinema, concierge service, communal gardens and a gymnasium featuring the latest Ergonomic Techno gym equipment.

Service charge £2530 per annum

Ground rent £475 per annum

Lease: 997 years remaining

*The above information has been provided to Cityzen by the client but not verified and upon entering into a purchase you should instruct a lawyer to check this information.

- 1 BEDROOM APARTMENT
- CHAIN FREE
- SOUTH ASPECT
- CONCIERGE
- 3RD FLOOR
- MINS FROM KENSINGTON OLYMPIA
- VIEWS OF GARDEN SQUARE
- GYM & CINEMA
- WALK TO KENSINGTON HIGH ST

The Atelier Apartments 45-51 Sinclair Road, London, W14 0NS

RESIDENTS GYM

RESIDENTS CINEMA

CONCIERGE LOBBY

THE ATELIER

BEDROOM

BEDROOM

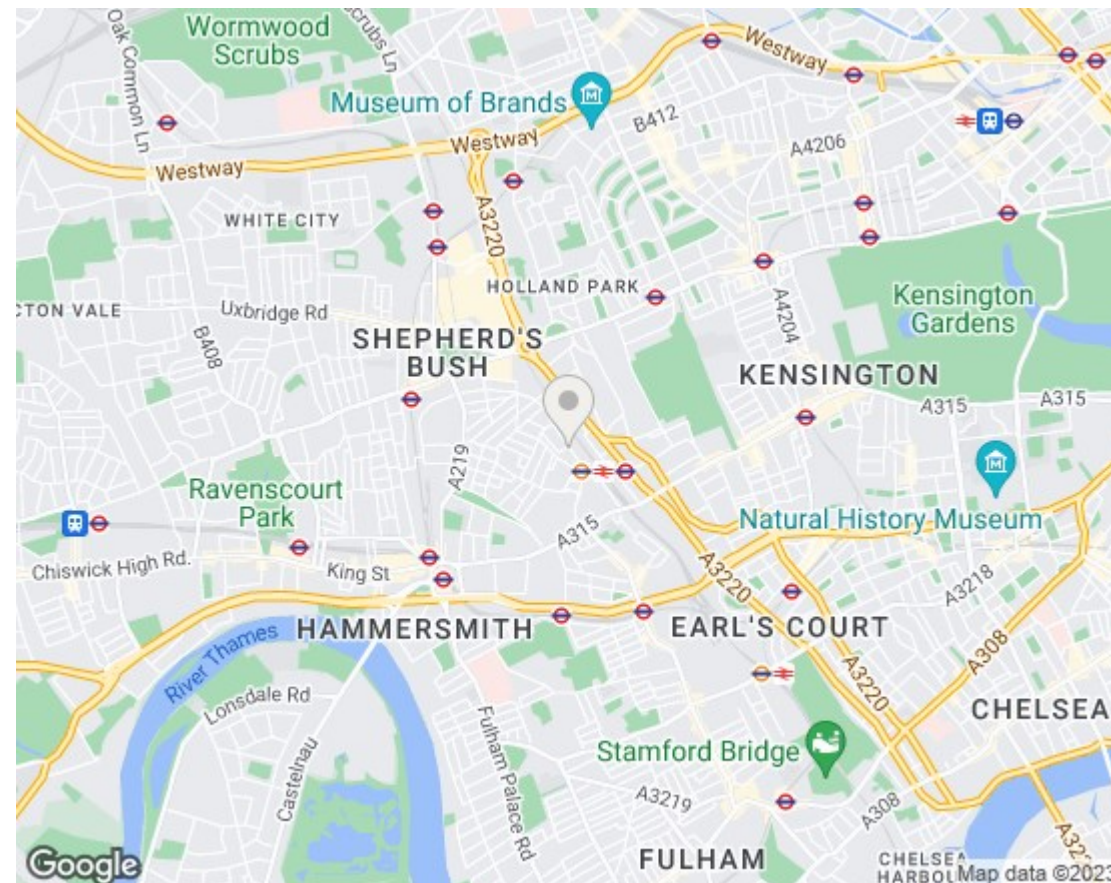
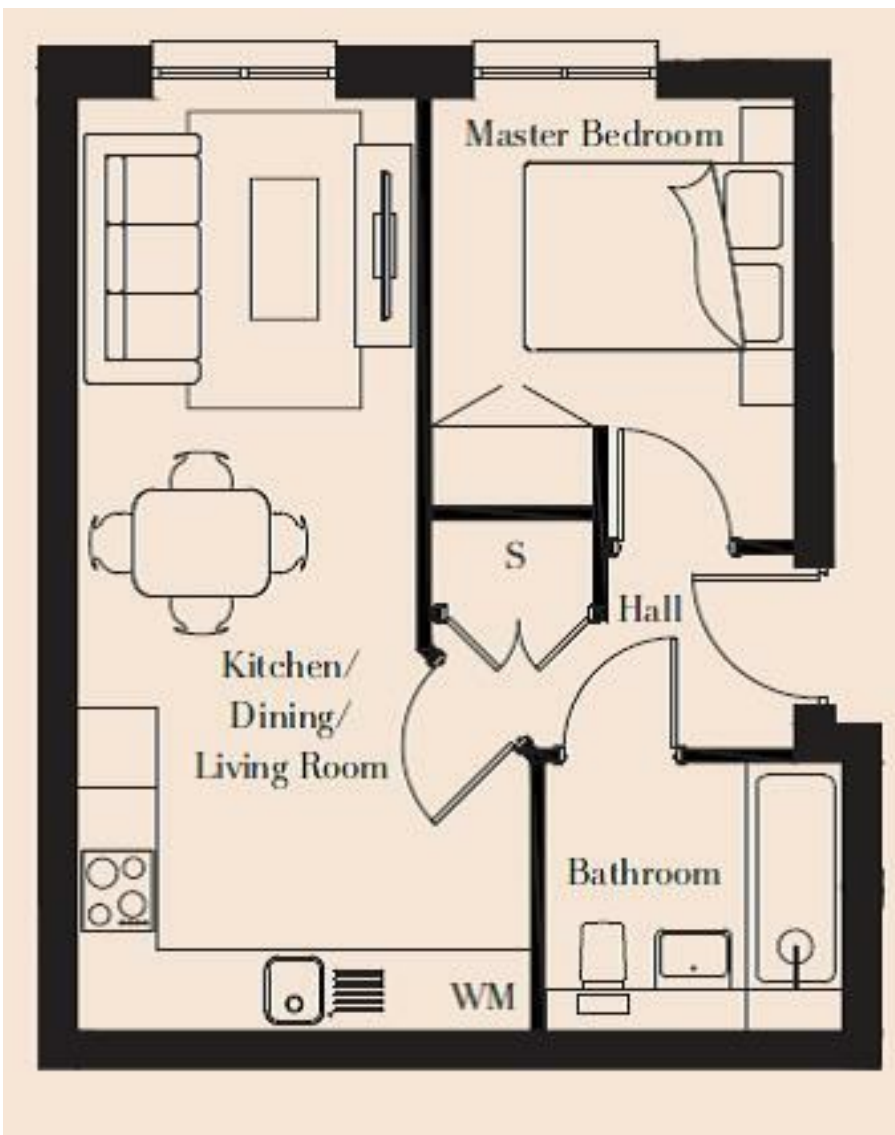
BATHROOM

RECEPTION ROOM

KITCHEN

RECEPTION ROOM

RESIDENTS GARDENS



Energy Efficiency Rating		Current	Potential
Very energy efficient - lower running costs			
(92 plus) A		84	84
(81-91) B			
(69-80) C			
(55-68) D			
(39-54) E			
(21-38) F			
(1-20) G			
Not energy efficient - higher running costs			
England & Wales		EU Directive 2002/91/EC	
Environmental Impact (CO ₂) Rating		Current	Potential
Very environmentally friendly - lower CO ₂ emissions			
(92 plus) A		93	93
(81-91) B			
(69-80) C			
(55-68) D			
(39-54) E			
(21-38) F			
(1-20) G			
Not environmentally friendly - higher CO ₂ emissions			
England & Wales		EU Directive 2002/91/EC	

We have prepared these property particulars as a general guide to a broad description of the property. They are not intended to constitute part of an offer or contract. We have not carried out a structural survey and the services, appliances and specific fittings have not been tested. All photographs, measurements, floorplans and distances referred to are given as a guide only and should not be relied upon for the purchase of carpets or any other fixtures or fittings. Lease details, service charges and ground rent (where applicable) and council tax are given as a guide only and should be checked and confirmed by your Solicitor prior to exchange of contracts.