



Amory Tower, 199 Marsh Wall, London, E14 9ZN

£650 Per Week

AMORY TOWER IS PART OF THE 'MADISON BUILDING' LOCATED ON MARSH WALL. RESIDENTS CAN ENJOY FACILITIES SUCH AS THE 20 METER POOL, THE LOFT GYM HOUSING ALL THE LATEST CARDIO VASCULAR EQUIPMENT AND A SUN TERRACE, SCREENING ROOM AND THE MANHATTAN LOUNGE WITH NO LESS THAN 3 TERRACES A KITCHEN AND BAR

The apartment is no less impressive and is set over 594 square feet and comprises a bright and spacious reception room with stained oak engineered timber wood flooring, a bespoke sleek kitchen with "Siemens" appliances and floor to ceiling windows facing West.

The double bedroom is unusual as it offers a view from bed with its curved floor to ceiling glass window, ample storage space is located in the bedroom with its built in wardrobes and the bedroom feels luxurious with its wool mix carpeting. The bathroom is impressive with a feature mosaic tiled wall and elegant fittings.

The apartment has underfloor heating and air cooling

COMES FURNISHED. AVAILABLE FROM 06.03.2026

- MADISON BUILDING
- 18TH FLOOR ONE BED
- COMES FURNISHED
- MARSH WALL LOCATION
- WALK TO CANARY WHARF ST
- 594 SQUARE FEET
- RES 18M POOL & GYM
- WALK TO SOUTH Q DLR
- GREAT VIEWS FROM ALL ROOMS
- SCREENING ROOM & LOUNGE



BUILDING LOBBY (CGI)



RESIDENTS POOL AT THE MADISON SPA (CGI)



SCREENING ROOM (CGI)



BUILDING LOBBY (CGI)



RESIDENTS MANHATTAN LOUNGE (CGI)

Amory Tower, 199 Marsh Wall, London, E14 9ZN



ONE OF 3 TERRACES AT THE MANHATTAN LOUNGE (CGI)



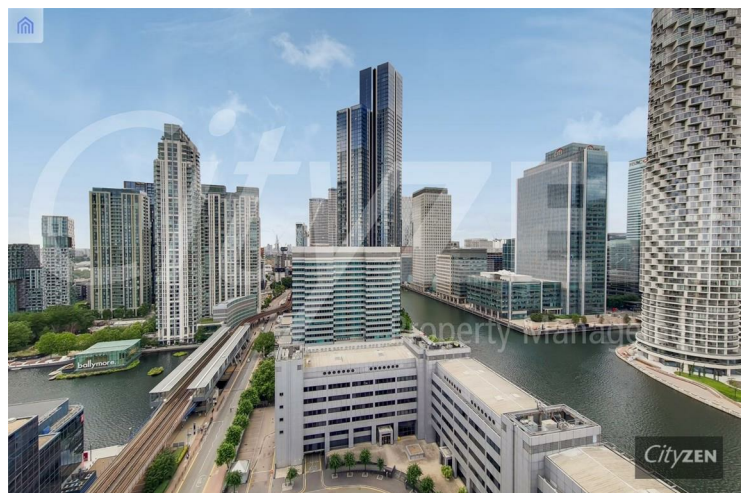
RESIDENTS GYM AT "THE LOFT GYM" (CGI)



AMORY TOWER



AMORY TOWER



VIEW FROM RECEPTION ROOM

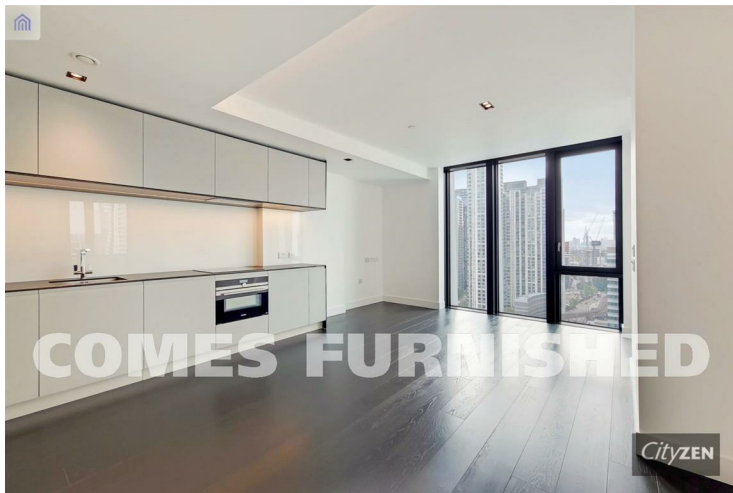
Amory Tower, 199 Marsh Wall, London, E14 9ZN



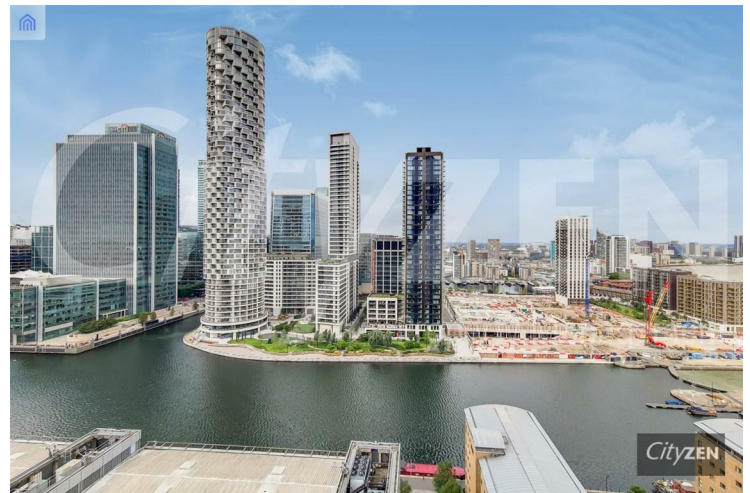
KITCHEN



RECEPTION ROOM



RECEPTION ROOM



VIEW FROM BEDROOM



RECEPTION ROOM

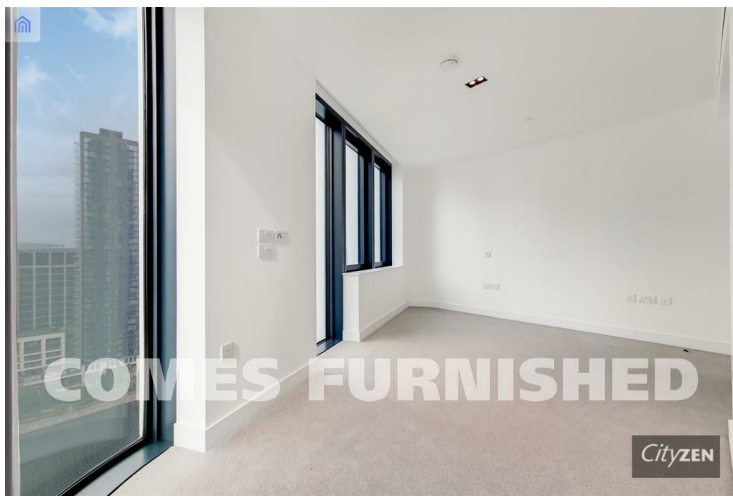


BEDROOM

Amory Tower, 199 Marsh Wall, London, E14 9ZN



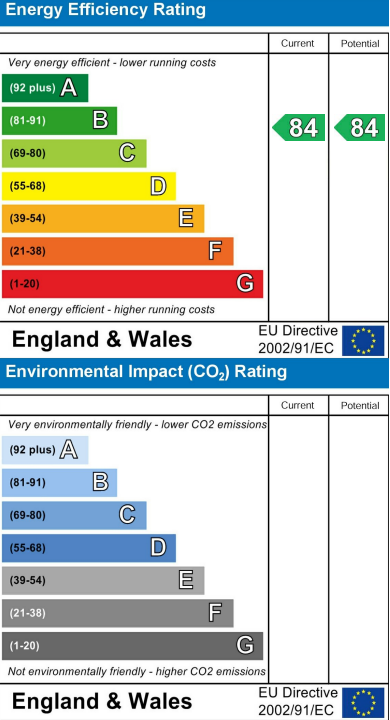
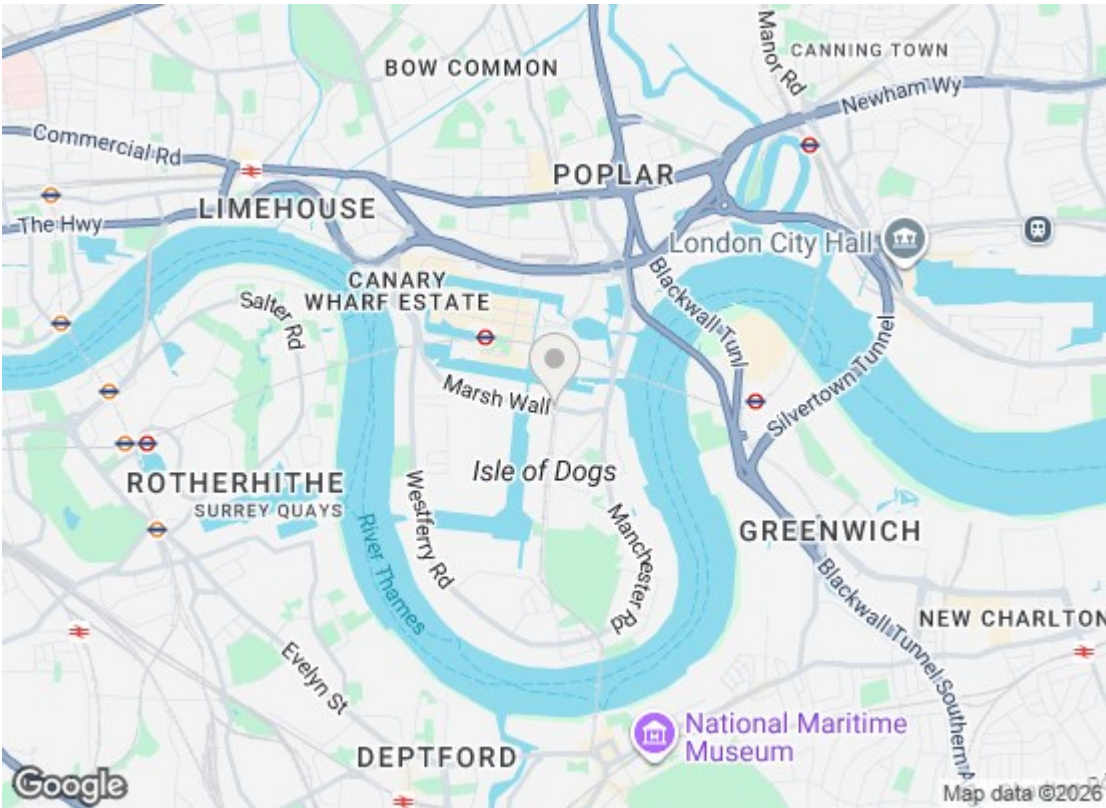
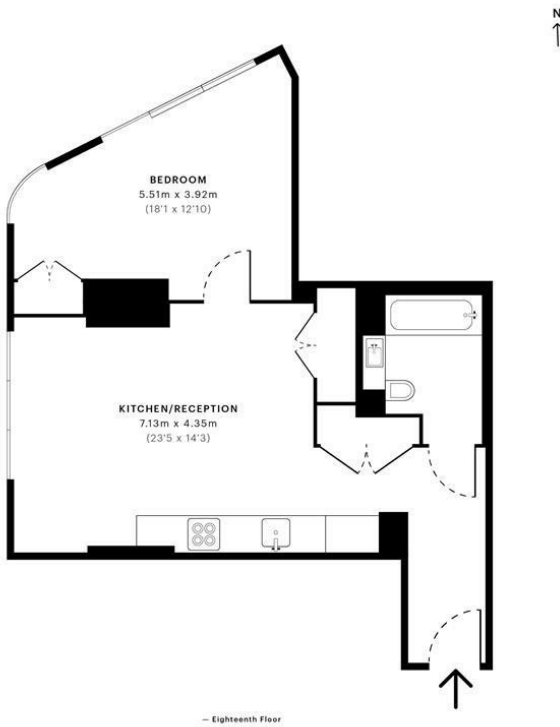
BEDROOM



BEDROOM



BATHROOM



We have prepared these property particulars as a general guide to a broad description of the property. They are not intended to constitute part of an offer or contract. We have not carried out a structural survey and the services, appliances and specific fittings have not been tested. All photographs, measurements, floorplans and distances referred to are given as a guide only and should not be relied upon for the purchase of carpets or any other fixtures or fittings. Lease details, service charges and ground rent (where applicable) and council tax are given as a guide only and should be checked and confirmed by your Solicitor prior to exchange of contracts.