



## Brigadier Walk, London, SE18 6NU

**£692 Per Week**

BRAND NEW SHOW FLAT JUST COMPLETED & READY FOR OCCUPATION

2 BEDROOM 2 BATHROOM APARTMENT IN HENNESSEY APARTMENTS  
 ROYAL ARSENAL SE18  
 1ST FLOOR  
 OVER 880 SQUARE FEET  
 BALCONY WITH DIRECT RIVER VIEWS  
 DUAL ASPECT BEDROOMS

FLAT HAS BEEN INTERIOR DESIGNED & FURNISHED TO A VERY HIGH STANDARD BY DEVELOPER  
 FULL USE OF THE WATERSIDE CLUB POOL, GYM & SPA

AVAILABLE NOW  
 FURNISHED

- BRAND NEW EX SHOW FLAT FOR LET
- INTERIOR DESIGNED THROUGHOUT
- CONCIERGE & WATERSIDE CLUB IN SAME BUILDING
- TWO BEDROOMS & TWO BATHROOMS
- PART OF "ROYAL ARSENAL" SE18
- ON SITE STATION & RESTAURANTS/BARS
- SET OVER 880 SQUARE FEET
- DIRECT RIVER VIEWS
- DUAL ASPECT BEDROOMS
- FULL USE OF POOL, JACUZZI, SPA, GYM & CINEMA ROOM



## Brigadier Walk, London, SE18 6NU



**HENNESSEY APTS**



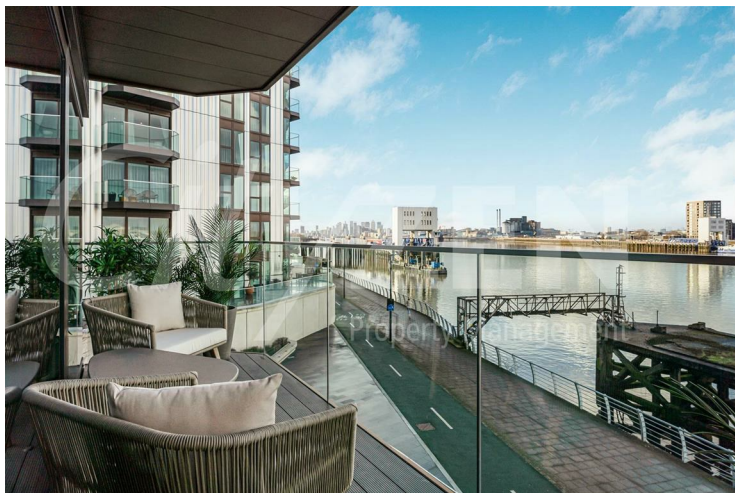
**RECEPTION**



**BALCONY**



**RECEPTION**



**BALCONY**



**RECEPTION**



## Brigadier Walk, London, SE18 6NU



BEDROOM



BEDROOM



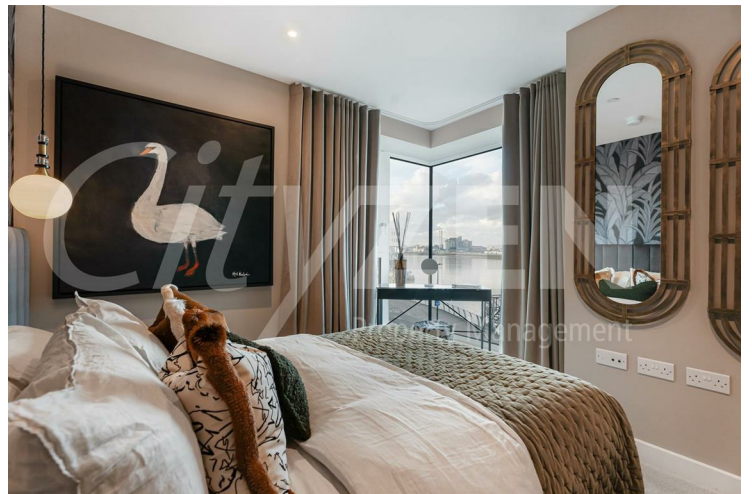
BEDROOM



BEDROOM



BEDROOM



BEDROOM



## Brigadier Walk, London, SE18 6NU



HALLWAY



BATHROOM



SHOWER ROOM



BEDROOM



BEDROOM & EN-SUITE



BEDROOM



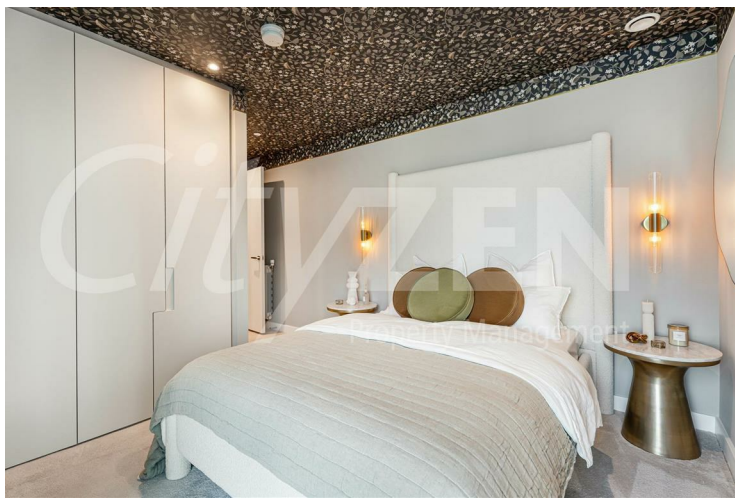
## Brigadier Walk, London, SE18 6NU



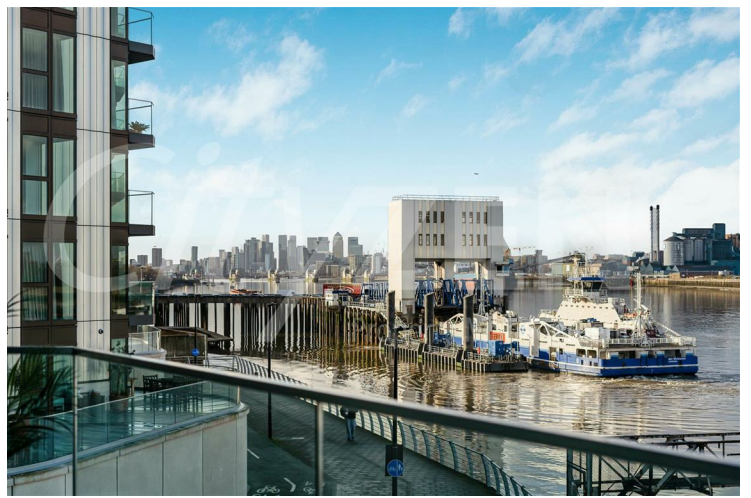
BEDROOM



DINING AREA



BEDROOM



RIVER VIEWS FROM BALCONY



RIVER VIEWS



RIVER VIEWS



## Brigadier Walk, London, SE18 6NU



BEDROOM



RECEPTION



RECEPTION



KITCHEN



KITCHEN



HENNESSEY APTS



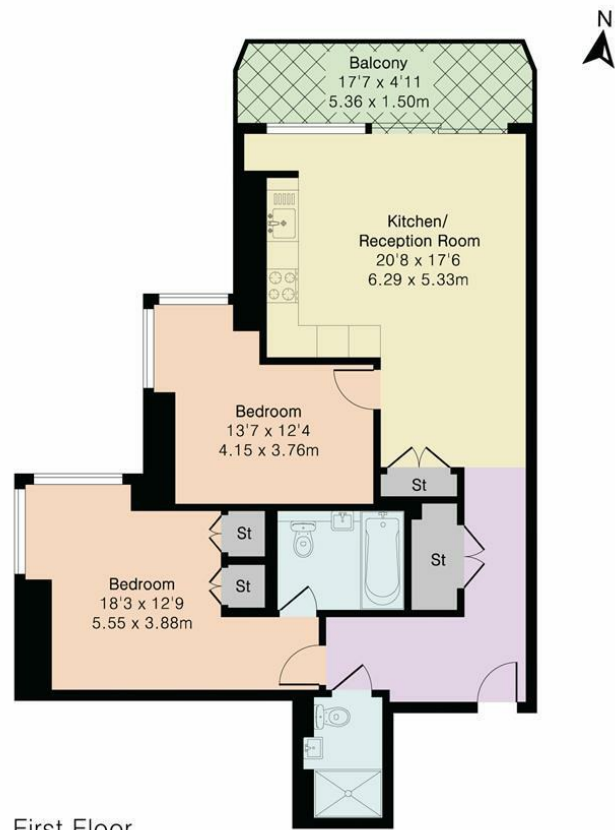
## Brigadier Walk, London, SE18 6NU



HENNESSEY APTS



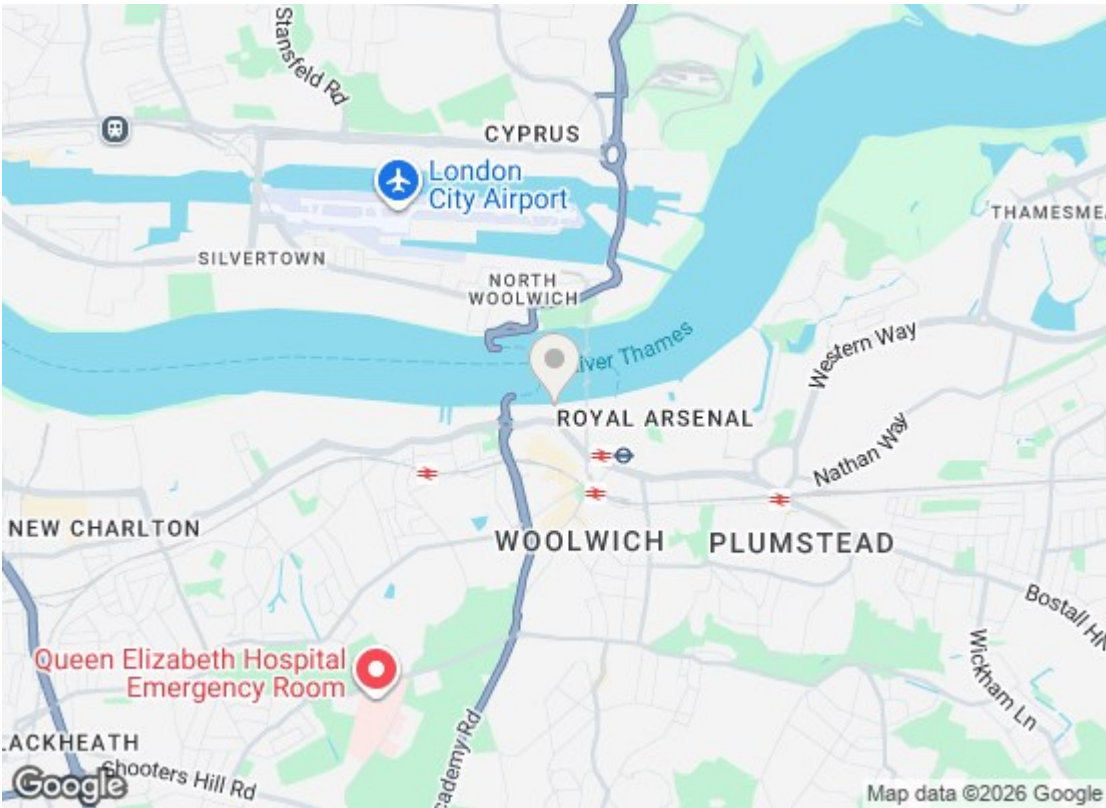
Approximate Gross Internal Area 882 sq ft - 82 sq m



First Floor



Floor plan produced in accordance with RICS Property Measurement 2nd Edition. Although Pink Plan Ltd ensures the highest level of accuracy, measurements of doors, windows and rooms are approximate and no responsibility is taken for error, omission or misstatement. These plans are for representation purposes only and no guarantee is given on the total square footage of the property within this plan. The figure icon is for initial guidance only and should not be relied on as a basis of valuation.



Energy Efficiency Rating		
	Current	Potential
Very energy efficient - lower running costs		
(92 plus) A		
(81-91) B	85	85
(69-80) C		
(55-68) D		
(39-54) E		
(21-38) F		
(1-20) G		
Not energy efficient - higher running costs		
England & Wales EU Directive 2002/91/EC		
Environmental Impact (CO <sub>2</sub> ) Rating		
	Current	Potential
Very environmentally friendly - lower CO <sub>2</sub> emissions		
(92 plus) A		
(81-91) B		
(69-80) C		
(55-68) D		
(39-54) E		
(21-38) F		
(1-20) G		
Not environmentally friendly - higher CO <sub>2</sub> emissions		
England & Wales EU Directive 2002/91/EC		

We have prepared these property particulars as a general guide to a broad description of the property. They are not intended to constitute part of an offer or contract. We have not carried out a structural survey and the services, appliances and specific fittings have not been tested. All photographs, measurements, floorplans and distances referred to are given as a guide only and should not be relied upon for the purchase of carpets or any other fixtures or fittings. Lease details, service charges and ground rent (where applicable) and council tax are given as a guide only and should be checked and confirmed by your Solicitor prior to exchange of contracts.