



Eagle Point, City Road, London, EC1V 1AQ

£785 Per Week

A 2 DOUBLE BEDROOM 2 BATHROOM APARTMENT FOR RENT WITHIN THE VERY SOUGHT AFTER 'EAGLE POINT' DEVELOPMENT LOCATED ON CITY ROAD MOMENTS FROM OLD STREET.

This stunning apartment enjoys a sunny aspect with spacious rooms, balcony, luxury fitted kitchen and bathroom suites. Finished to the exacting standards you would expect from such a prestigious development.

Short walk to Old Street tube station, 24 hour concierge, 12 seat cinema, spa, pool and gym.

Comes furnished.

PROPERTY AVAILABLE FROM 04.07.2025

- EAGLE POINT EC1
- 2 MINS FROM OLD STREET STATION
- 2 DOUBLE BEDS 2 BATHROOMS
- RESIDENTS PRIVATE CINEMA
- SPA, POOL & GYM
- 24HR CONCIERGE
- COMMUNAL COURTYARD GARDENS
- FURNISHED TO A HIGH STANDARD
- AVAILABLE FROM 04.07.2025
- BALCONY

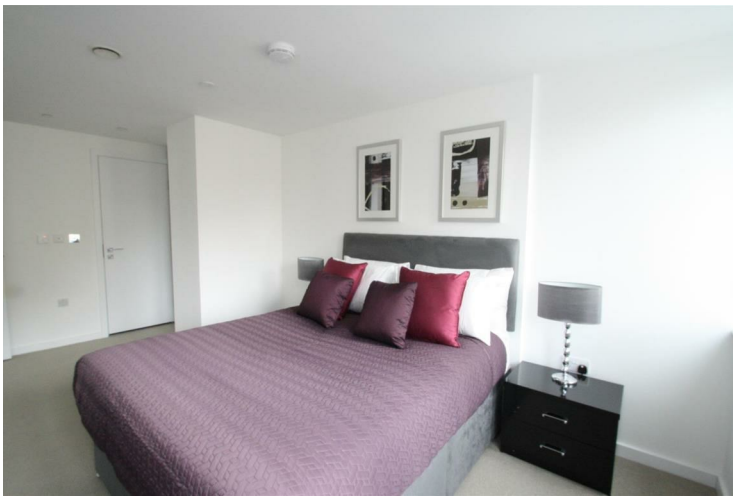
Eagle Point, City Road, London, EC1V 1AQ



Reception room/kitchen



Bedroom two



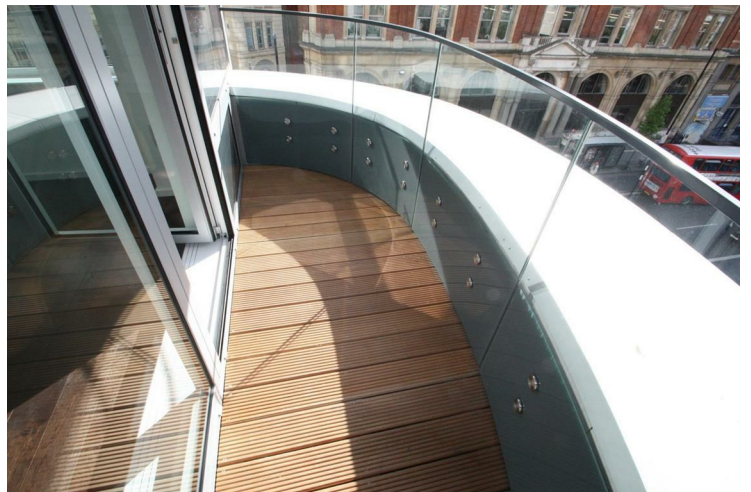
Bedroom one



Bathroom



En-suite

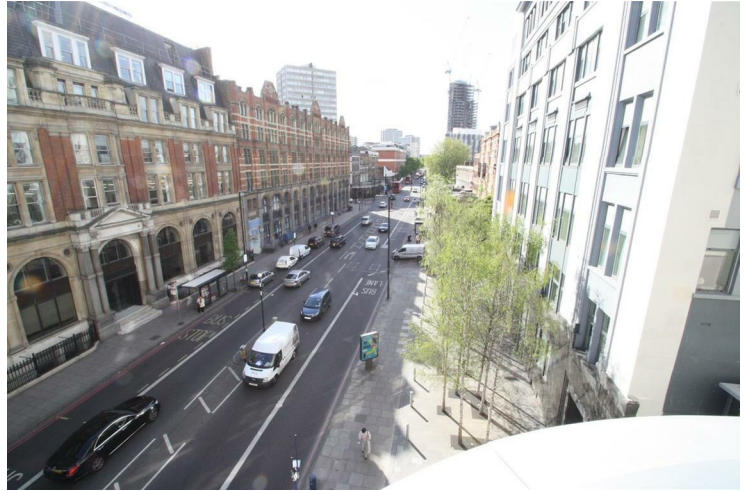


Balcony

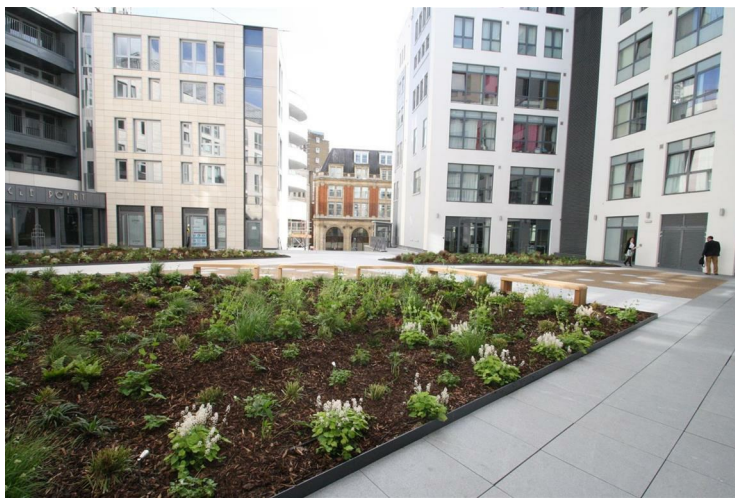
Eagle Point, City Road, London, EC1V 1AQ



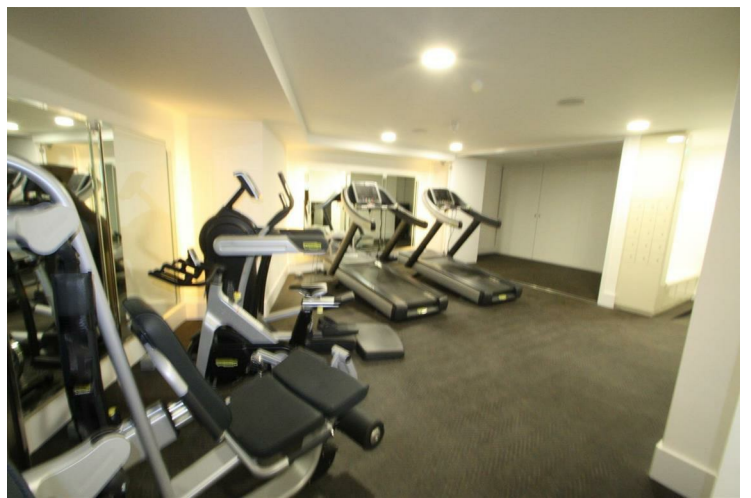
Eagle Point



View from balcony



Communal gardens



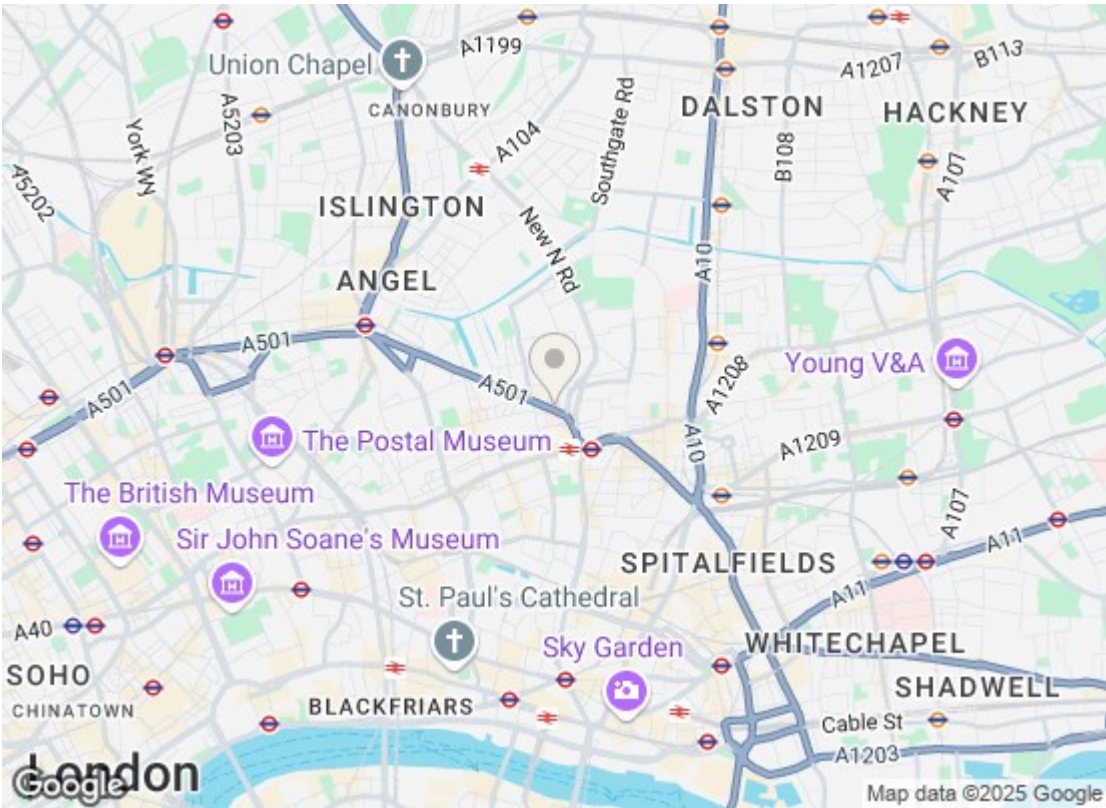
Gym



Eagle Point



Pool/spa



Energy Efficiency Rating		
	Current	Potential
Very energy efficient - lower running costs		
(92 plus) A	83	83
(81-91) B		
(69-80) C		
(55-68) D		
(39-54) E		
(21-38) F		
(1-20) G		
Not energy efficient - higher running costs		
England & Wales		EU Directive 2002/91/EC
Environmental Impact (CO ₂) Rating		
	Current	Potential
Very environmentally friendly - lower CO ₂ emissions		
(92 plus) A	87	87
(81-91) B		
(69-80) C		
(55-68) D		
(39-54) E		
(21-38) F		
(1-20) G		
Not environmentally friendly - higher CO ₂ emissions		
England & Wales		EU Directive 2002/91/EC

We have prepared these property particulars as a general guide to a broad description of the property. They are not intended to constitute part of an offer or contract. We have not carried out a structural survey and the services, appliances and specific fittings have not been tested. All photographs, measurements, floorplans and distances referred to are given as a guide only and should not be relied upon for the purchase of carpets or any other fixtures or fittings. Lease details, service charges and ground rent (where applicable) and council tax are given as a guide only and should be checked and confirmed by your Solicitor prior to exchange of contracts.