



Silkbank Wharf, 21 Derwent Street, Manchester, M5 4JR

£357 Per Week

SILKBANK WHARF (PAVILION WHARF) MANCHESTER M5

15TH FLOOR TWO BED, TWO BATH APARTMENT WITHIN NEWLY BUILT WATERSIDE DEVELOPMENT

LOCATED ON THE BANKS OF THE RIVER IRWELL OPPOSITE THE HISTORIC CASTLEFIELD AREA AND CLOSE TO THE CITY CENTER

CANAL & CITY CENTRE VIEWS

COMES FURNISHED

AVAILABLE FROM 10.07.2025

- SILKBANK WHARF (PAVILION WHARF)
- WATERFRONT LIVING
- GYM, RESIDENTS LOUNGE, CO-WORKING SPACE, CONCIERGE
- DUAL ASPECT RECEPTION ROOM
- 1 BEDROOM APARTMENT
- LOCATED ON THE BANKS OF THE RIVER IRWELL
- FURNISHED
- 15TH FLOOR
- CLOSE TO CITY CENTER
- CANAL & CITY CENTRE VIEWS

Silkbank Wharf, 21 Derwent Street, Manchester, M5 4JR



KITCHEN



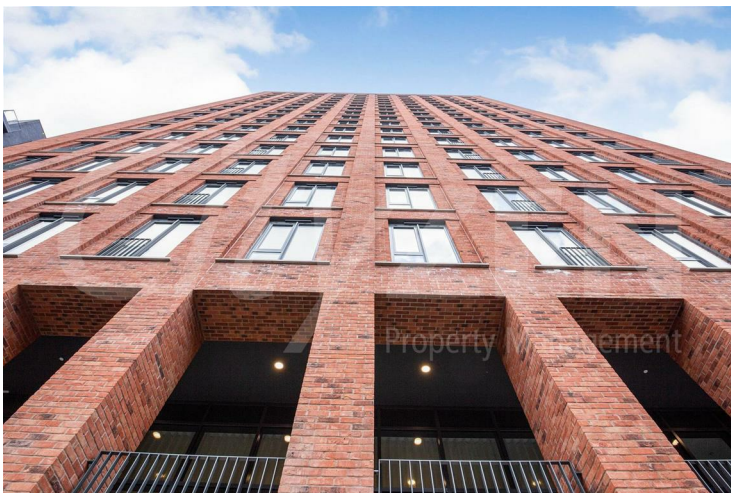
SILKBANK WHARF



BATHROOM



SILKBANK WHARF



SILKBANK WHARF



GYM

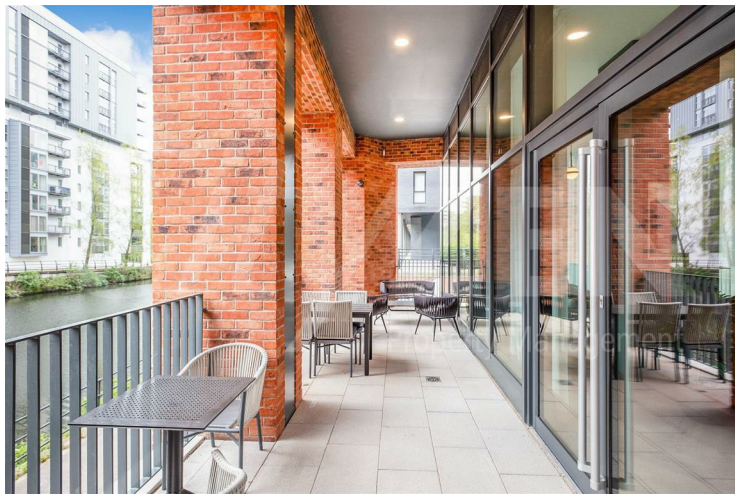
Silkbank Wharf, 21 Derwent Street, Manchester, M5 4JR



LOBBY/LOUNGE



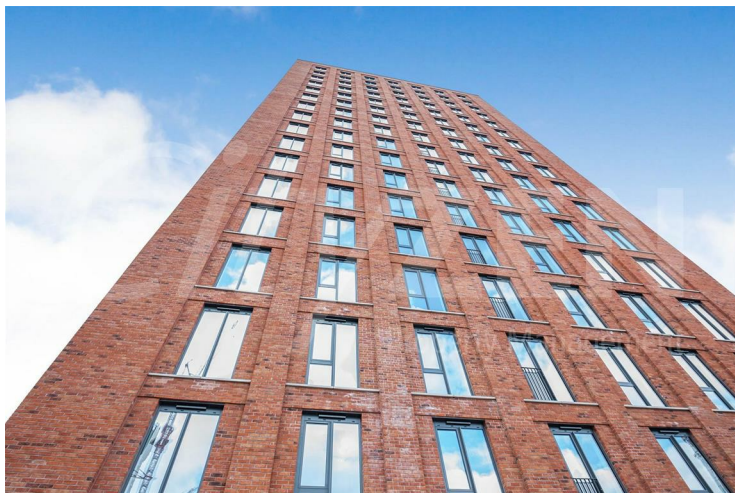
RECEPTION



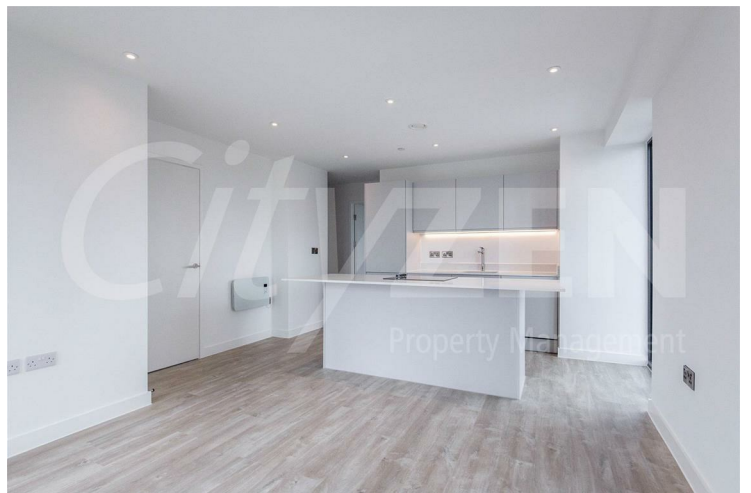
RIVERSIDE TERRACE



KITCHEN



SILKBANK WHARF

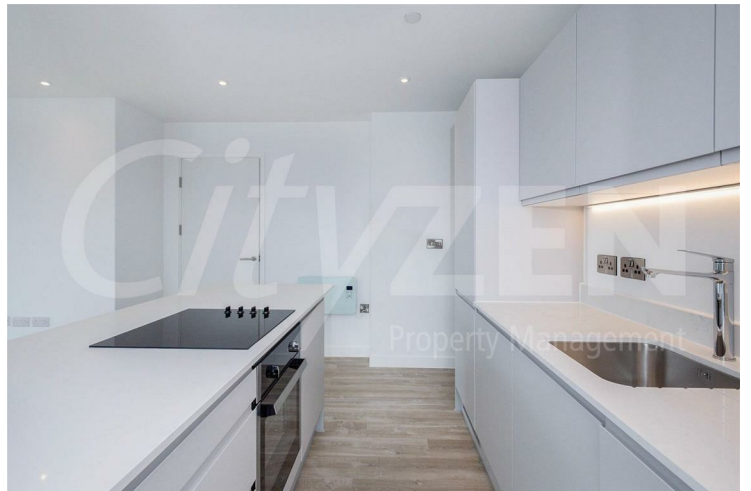


RECEPTION

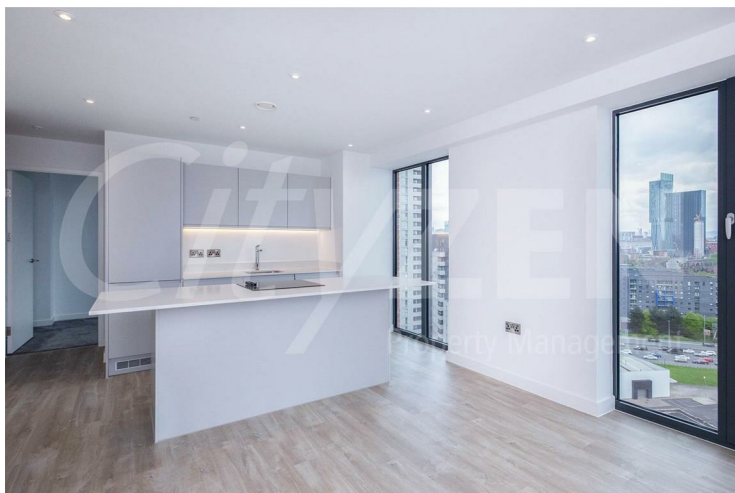
Silkbank Wharf, 21 Derwent Street, Manchester, M5 4JR



RECEPTION



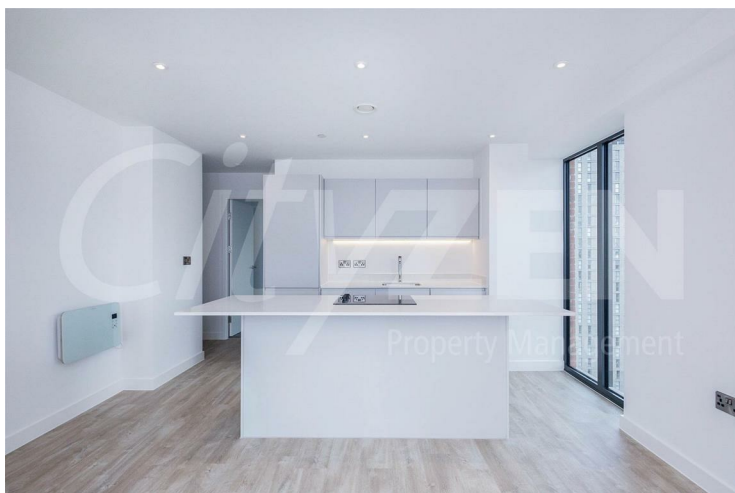
KITCHEN



RECEPTION



BEDROOM



RECEPTION



BEDROOM

Silkbank Wharf, 21 Derwent Street, Manchester, M5 4JR



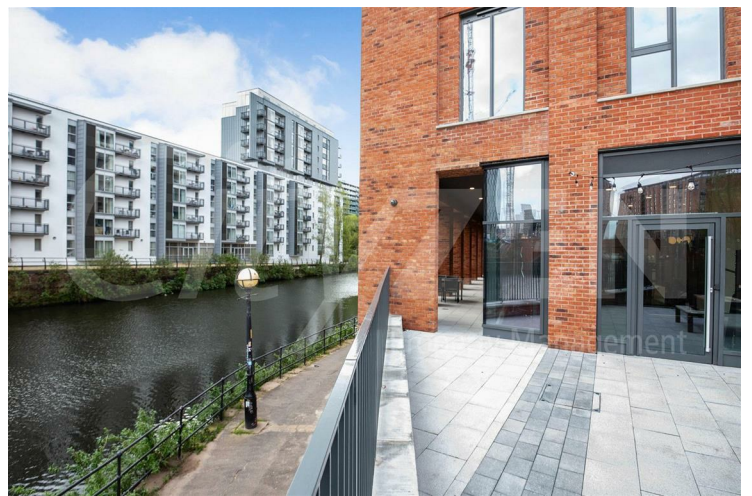
BEDROOM



SILKBANK WHARF



BEDROOM



SILKBANK WHARF



BUILDING ENTRANCE

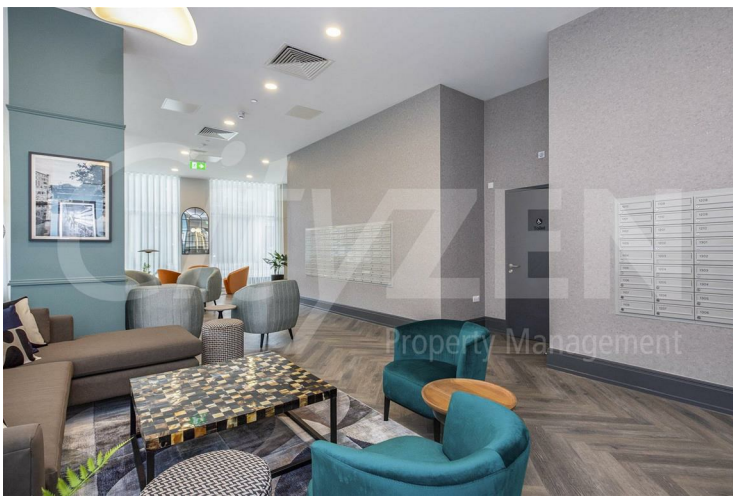


LOBBY/LOUNGE

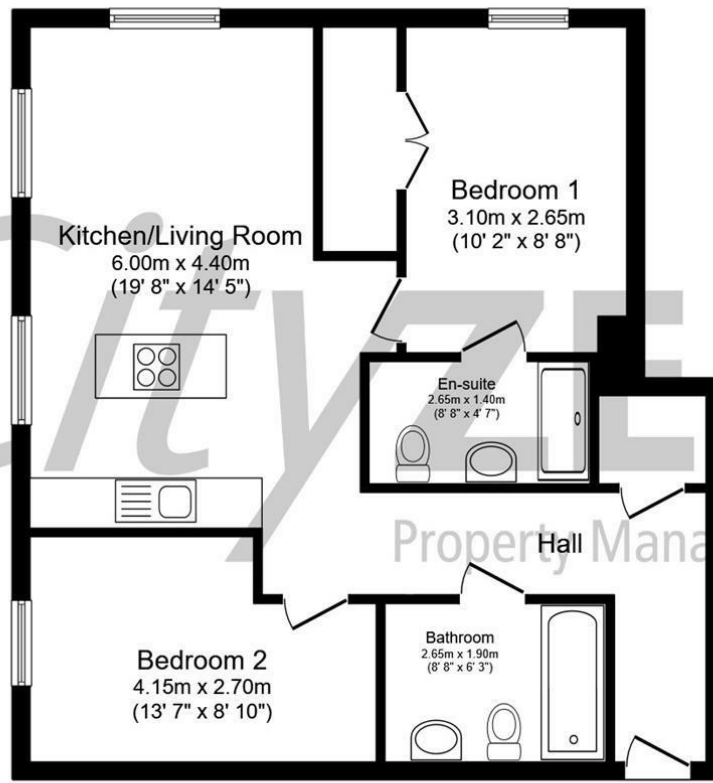
Silkbank Wharf, 21 Derwent Street, Manchester, M5 4JR



LOBBY/LOUNGE

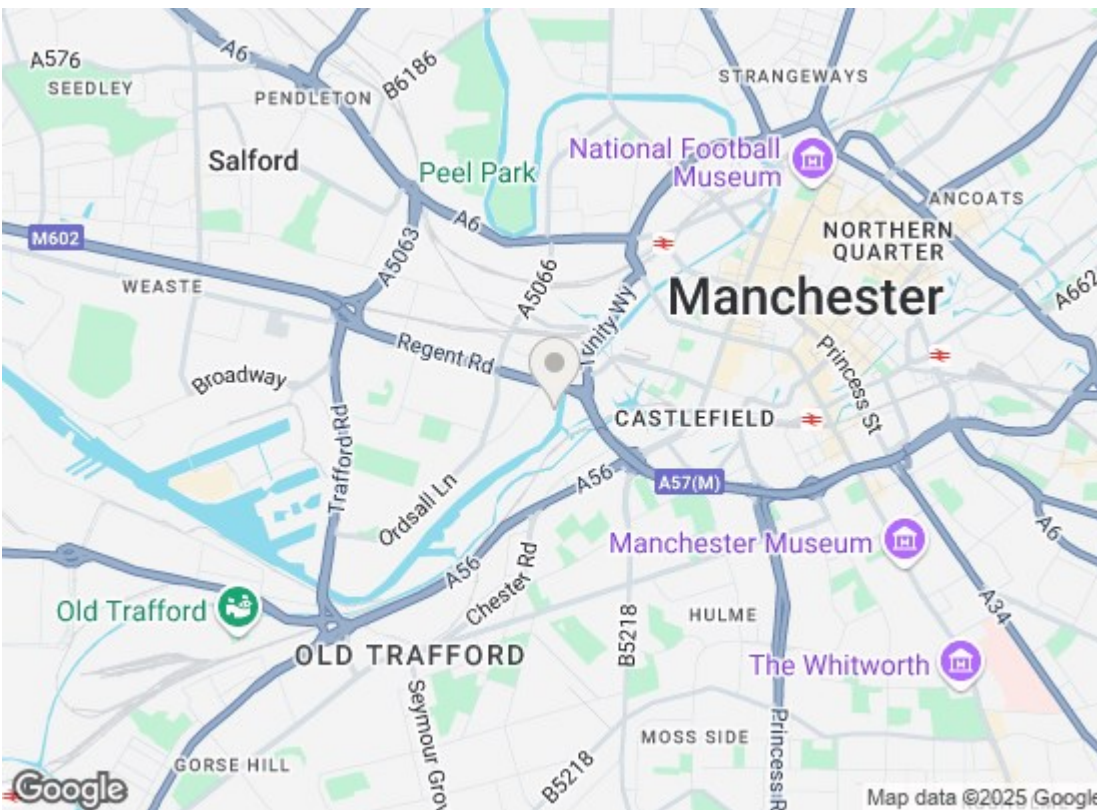


LOBBY/LOUNGE



Total floor area 67.1 m² (722 sq.ft.) approx

This floor plan is for illustrative purposes only. It is not drawn to scale. Any measurements, floor areas (including any total floor area), openings and orientation are approximate. No details are guaranteed, they cannot be relied upon for any purpose and they do not form part of any agreement. No liability is taken for any error, omission or misstatement. A party must rely upon its own inspection(s). Powered by www.focalagent.com



Energy Efficiency Rating		
	Current	Potential
Very energy efficient - lower running costs		
(92 plus) A		
(81-91) B	81	81
(69-80) C		
(55-68) D		
(39-54) E		
(21-38) F		
(1-20) G		
Not energy efficient - higher running costs		
England & Wales EU Directive 2002/91/EC		
Environmental Impact (CO ₂) Rating		
	Current	Potential
Very environmentally friendly - lower CO ₂ emissions		
(92 plus) A		
(81-91) B		
(69-80) C		
(55-68) D		
(39-54) E		
(21-38) F		
(1-20) G		
Not environmentally friendly - higher CO ₂ emissions		
England & Wales EU Directive 2002/91/EC		

We have prepared these property particulars as a general guide to a broad description of the property. They are not intended to constitute part of an offer or contract. We have not carried out a structural survey and the services, appliances and specific fittings have not been tested. All photographs, measurements, floorplans and distances referred to are given as a guide only and should not be relied upon for the purchase of carpets or any other fixtures or fittings. Lease details, service charges and ground rent (where applicable) and council tax are given as a guide only and should be checked and confirmed by your Solicitor prior to exchange of contracts.