



Grove House, Skerton Road, Manchester, M16 0TU

£219 Per Week

MODERN 1 BEDROOM APARTMENT FOR RENT IN MANCHESTER, M16

LOCATED ON SKERTON ROAD OFFERING EASY ACCESS TO THE TOWN CENTRE AND METRO LINK

COMES FURNISHED

AVAILABLE FROM 29.07.2025

- FURNISHED
- WALK TO TOWN CENTRE
- MODERN KITCHEN AND BATHROOM
- AVAILABLE FROM 29.07.2025
- WALK TO METRO LINK
- WOODEN FLOORING TO LOUNGE
- 1 BEDROOM APARTMENT
- GROVE HOUSE M16

Grove House, Skerton Road, Manchester, M16 0TU



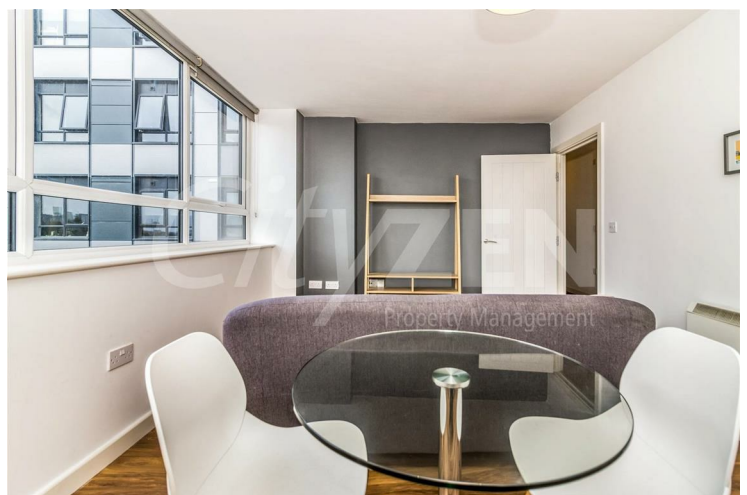
RECEPTION (SIMILAR FLAT)



KITCHEN (SIMILAR FLAT)



RECEPTION (SIMILAR FLAT)



RECEPTION (SIMILAR FLAT)



KITCHEN (SIMILAR FLAT)



RECEPTION (SIMILAR FLAT)

Grove House, Skerton Road, Manchester, M16 0TU



BEDROOM (SIMILAR FLAT)



BATHROOM (SIMILAR FLAT)



BEDROOM (SIMILAR FLAT)



BATHROOM (SIMILAR FLAT)



BEDROOM (SIMILAR FLAT)



BATHROOM (SIMILAR FLAT)

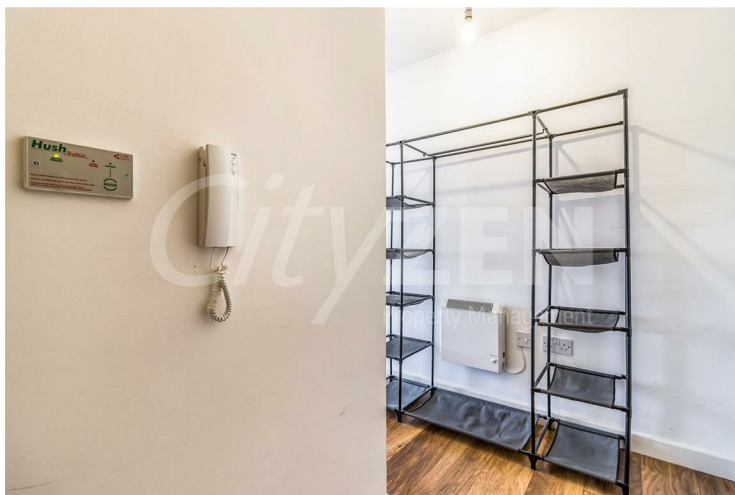
Grove House, Skerton Road, Manchester, M16 0TU



BATHROOM (SIMILAR FLAT)



BUILDING LOBBY



HALLWAY (SIMILAR FLAT)



GROVE HOUSE



BUILDING ENTRANCE



GROVE HOUSE

Grove House, Skerton Road, Manchester, M16 0TU



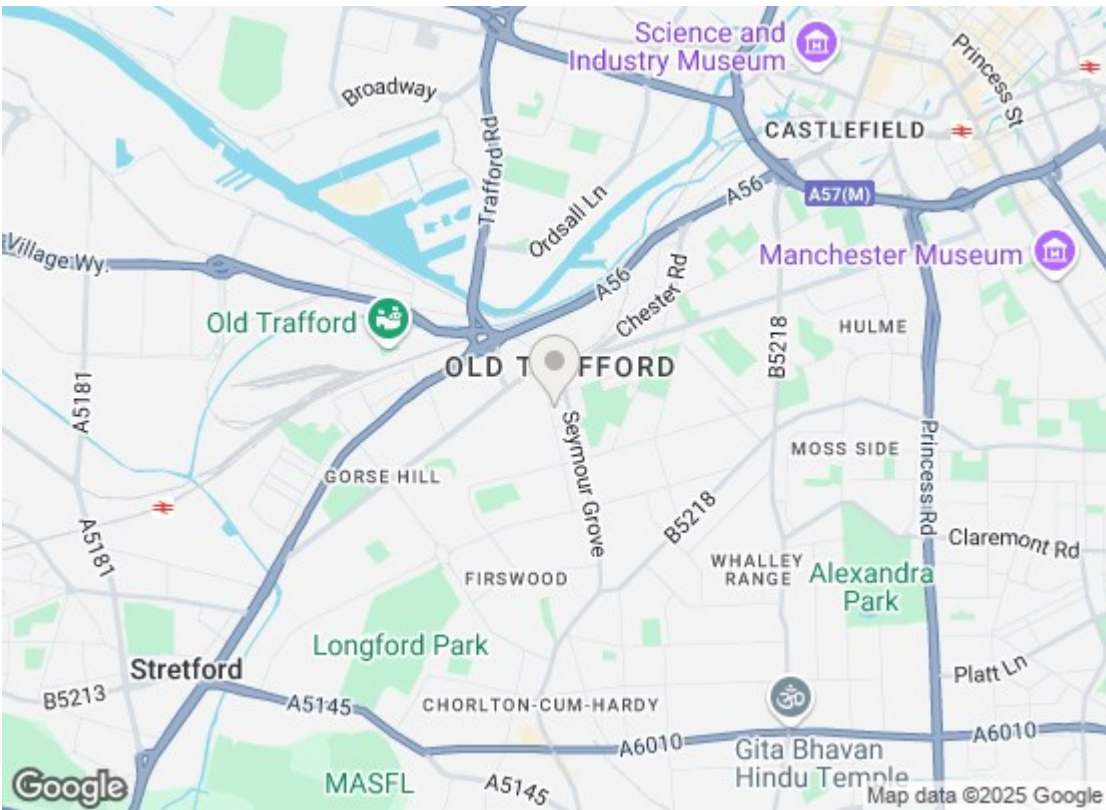
GROVE HOUSE



GROVE HOUSE



GROVE HOUSE



Energy Efficiency Rating		
	Current	Potential
Very energy efficient - lower running costs		
(92 plus) A		
(81-91) B	81	85
(69-80) C		
(55-68) D		
(39-54) E		
(21-38) F		
(1-20) G		
Not energy efficient - higher running costs		
England & Wales EU Directive 2002/91/EC		
Environmental Impact (CO ₂) Rating		
	Current	Potential
Very environmentally friendly - lower CO ₂ emissions		
(92 plus) A		
(81-91) B		
(69-80) C		
(55-68) D		
(39-54) E		
(21-38) F		
(1-20) G		
Not environmentally friendly - higher CO ₂ emissions		
England & Wales EU Directive 2002/91/EC		

We have prepared these property particulars as a general guide to a broad description of the property. They are not intended to constitute part of an offer or contract. We have not carried out a structural survey and the services, appliances and specific fittings have not been tested. All photographs, measurements, floorplans and distances referred to are given as a guide only and should not be relied upon for the purchase of carpets or any other fixtures or fittings. Lease details, service charges and ground rent (where applicable) and council tax are given as a guide only and should be checked and confirmed by your Solicitor prior to exchange of contracts.