



Cassia Building, Gorsuch Place, London, E2 8HY

£753 Per Week

5TH FLOOR TWO DOUBLE BEDROOM APARTMENT FOR RENT WITHIN SOUGHT AFTER SHOREDITCH DEVELOPMENT .

This 5th floor apartment is set over 794 square feet and boasts a South/West facing balcony

The Shoreditch vibe is continued inside the apartment with designer bathrooms and kitchens as well as its interior designed furnishings. The designer communal areas include gym, cinema, residents lounge/library and roof gardens with City views. A 24 hour concierge is also at your service.

The accommodation comprises a spacious and bright lounge with access to a South/West facing balcony, open access to a fully fitted kitchen. Both the bedrooms are doubles and have fitted storage and the use of a designer family bathroom off the hallway.

Comes furnished.

PROPERTY AVAILABLE FROM EARLY AUGUST

- 5TH FLOOR
- SHOREDITCH EXCHANGE E2
- 24 HR CONCIERGE
- RESIDENTS ROOF GARDEN
- SOUTH/WEST FACING
- "SHOREDITCH" INTERIOR STYLING"
- AVAILABLE FROM EARLY AUG
- 2 DOUBLE BEDROOMS
- RESIDENTS GYM, CINEMA & LIBRARY
- OVER 790 SQUARE FEET

Cassia Building, Gorsuch Place, London, E2 8HY



SHOREDITCH EXCHANGE



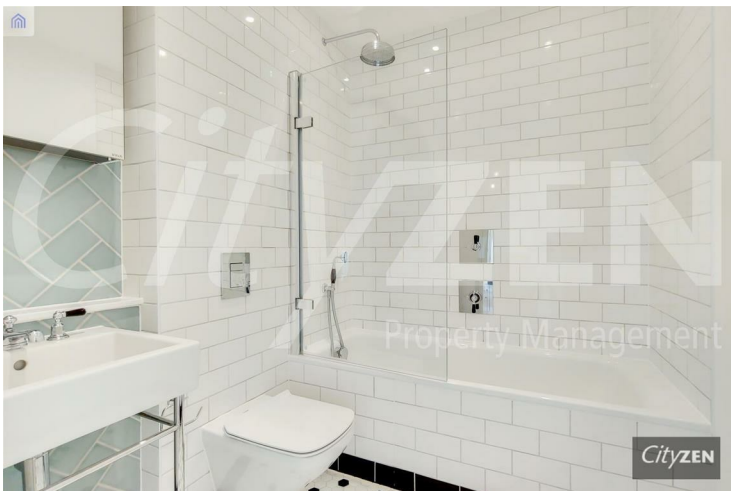
KITCHEN



RECEPTION



KITCHEN



BATHROOM



BEDROOM

Cassia Building, Gorsuch Place, London, E2 8HY



BEDROOM



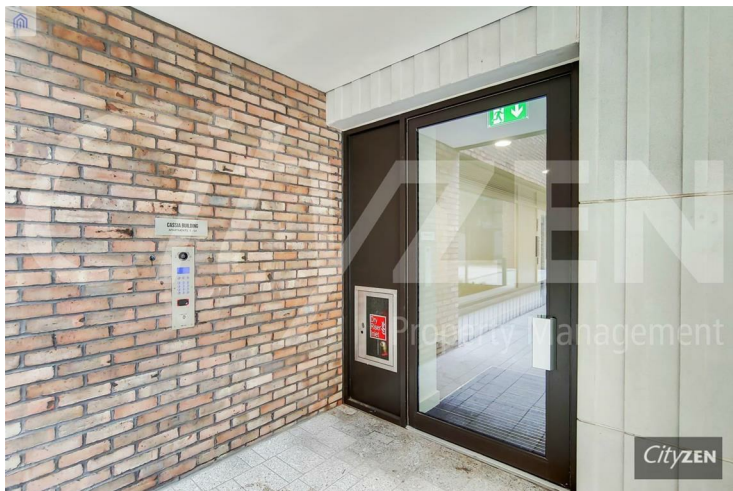
RESIDENTS LOUNGE/LIBRARY



BALCONY



RESIDENTS GYM



CASSIA BUILDING



RESIDENTS LOBBY

Cassia Building, Gorsuch Place, London, E2 8HY



RESIDENTS CINEMA



RESIDENTS GYM



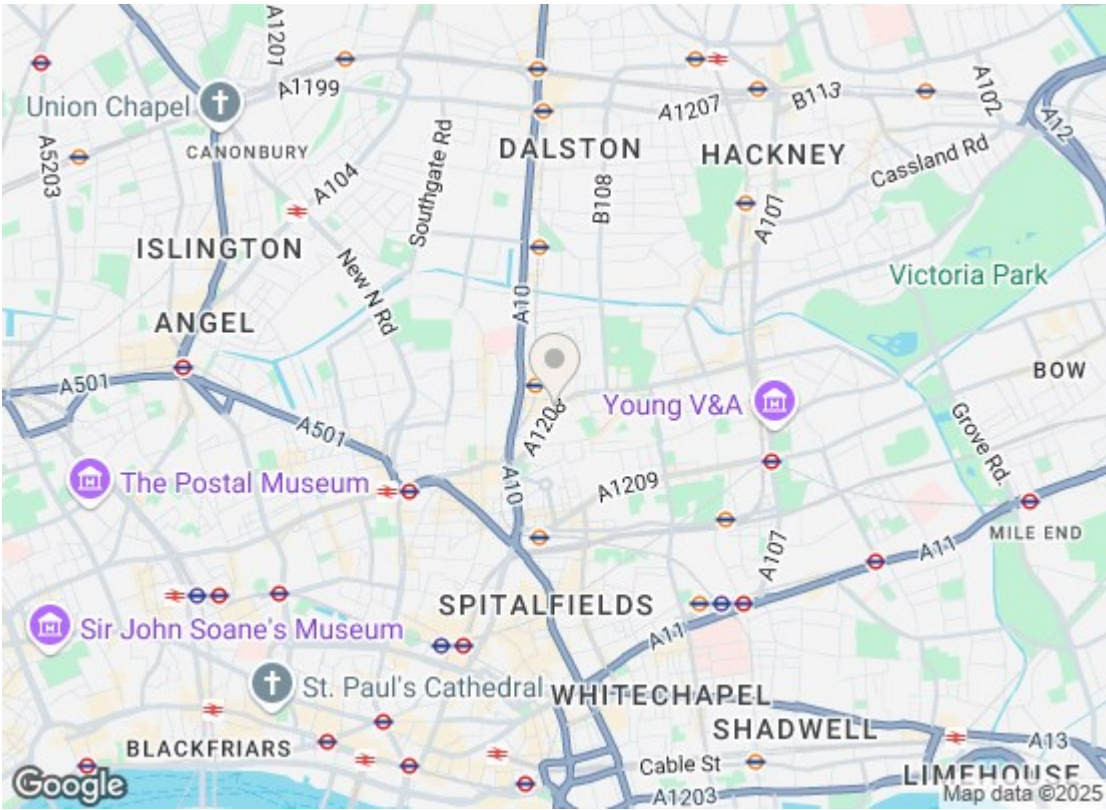
RECEPTION ROOM



RESIDENTS LOBBY



RESIDENTS LOUNGE/LIBRARY



Energy Efficiency Rating		
	Current	Potential
Very energy efficient - lower running costs		
(92 plus) A		
(81-91) B	85	85
(69-80) C		
(55-68) D		
(39-54) E		
(21-38) F		
(1-20) G		
Not energy efficient - higher running costs		
EU Directive 2002/91/EC		
England & Wales		
Environmental Impact (CO ₂) Rating		
	Current	Potential
Very environmentally friendly - lower CO ₂ emissions		
(92 plus) A	92	92
(81-91) B		
(69-80) C		
(55-68) D		
(39-54) E		
(21-38) F		
(1-20) G		
Not environmentally friendly - higher CO ₂ emissions		
EU Directive 2002/91/EC		
England & Wales		

We have prepared these property particulars as a general guide to a broad description of the property. They are not intended to constitute part of an offer or contract. We have not carried out a structural survey and the services, appliances and specific fittings have not been tested. All photographs, measurements, floorplans and distances referred to are given as a guide only and should not be relied upon for the purchase of carpets or any other fixtures or fittings. Lease details, service charges and ground rent (where applicable) and council tax are given as a guide only and should be checked and confirmed by your Solicitor prior to exchange of contracts.