



## **The Haydon, 16 Minories, London, EC3N 1AX**

**£577 Per Week**

4TH FLOOR SUITE WITH A SOUTH EAST ASPECT

Our studio suite is located on the 4th floor and comprises spacious accommodation across 400 square feet

The property has ample storage with storage cupboards and built in storage in the bedroom area.

The finishes are of the highest quality including oak floors, natural stone and marble kitchens and bathrooms with the finest appliances. .

The Haydon is located moments from Aldgate Station, Tower Hill and all the shops, restaurants and bars the City of London has to offer. Residents benefit from a spa pool, gym, yoga studio, cinema and a 24/7 concierge located within the impressive double height residents lobby.

FURNISHED  
AVAILABLE NOW

- THE HAYDON A BOUTIQUE CITY DEVELOPMENT
- SPA POOL, GYM, ROOF GARDEN, CINEMA & 24-HOUR CONCIERGE
- NATURAL STONE & MARBLE FINISHES WITH OAK FLOORING
- OVER 400 SQUARE FEET OF SPACE WITH AMPLE STORAGE
- MOMENTS FROM ALDGATE STATION IN EC3N
- FURNISHED AND AVAILABLE FROM NOW
- VERY HIGH SPEC KITCHEN AND BATHROOM
- STUDIO SUITE ON THE 4TH FLOOR
- CITY LOCATION
- DEFINED LIVING AND BEDROOM AREA ALLOWING LIGHT AND PRIVACY



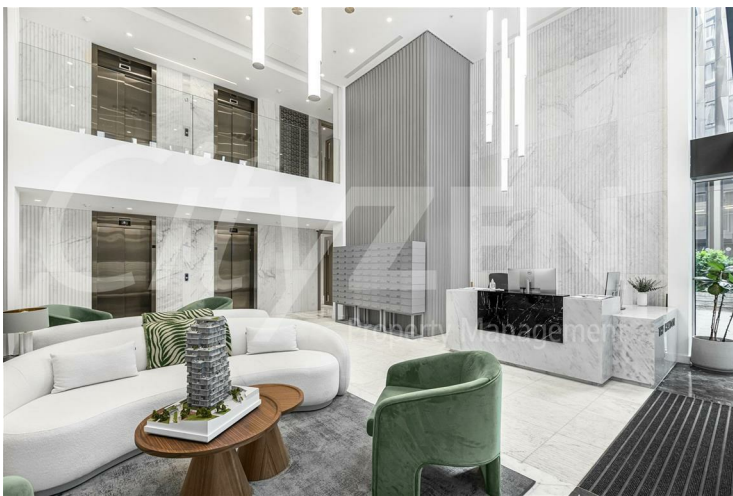
## The Haydon, 16 Minories, London, EC3N 1AX



RESIDENTS CINEMA



RESIDENTS POOL (CGI)



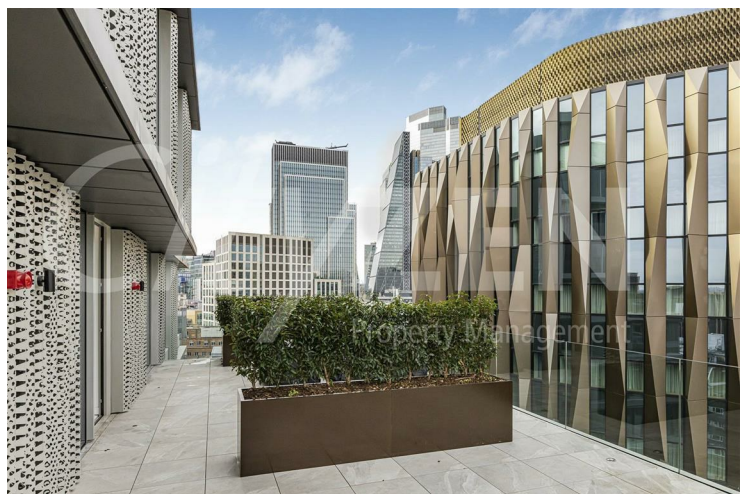
LOBBY



RESIDENTS GYM (CGI)



THE HAYDON



RESIDENTS ROOF GARDEN



# The Haydon, 16 Minories, London, EC3N 1AX



RESIDENTS ROOF GARDEN



RECEPTION AREA



VIEW FROM ROOF GARDEN



KITCHEN



KITCHEN



KITCHEN



## The Haydon, 16 Minories, London, EC3N 1AX



BEDROOM AREA



BATHROOM



BEDROOM AREA



STUDIO



STUDIO



STUDIO

## The Haydon, 16 Minories, London, EC3N 1AX



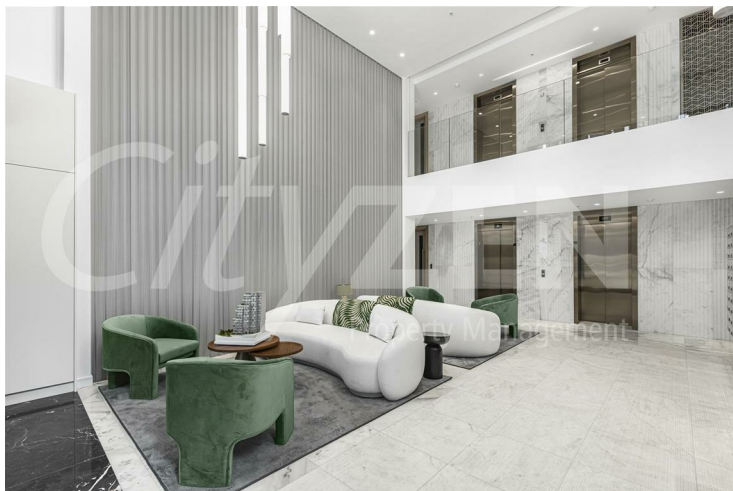
STUDIO



THE HAYDON



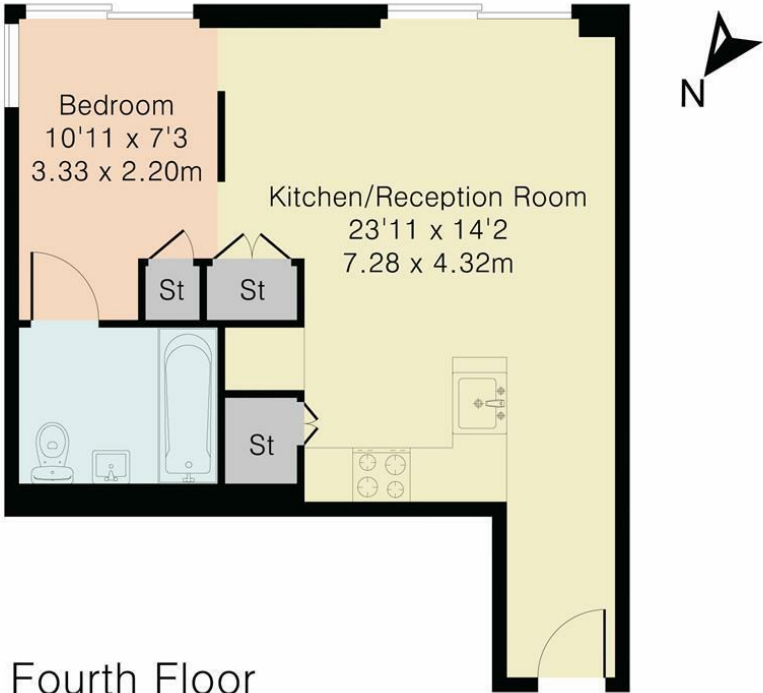
STUDIO



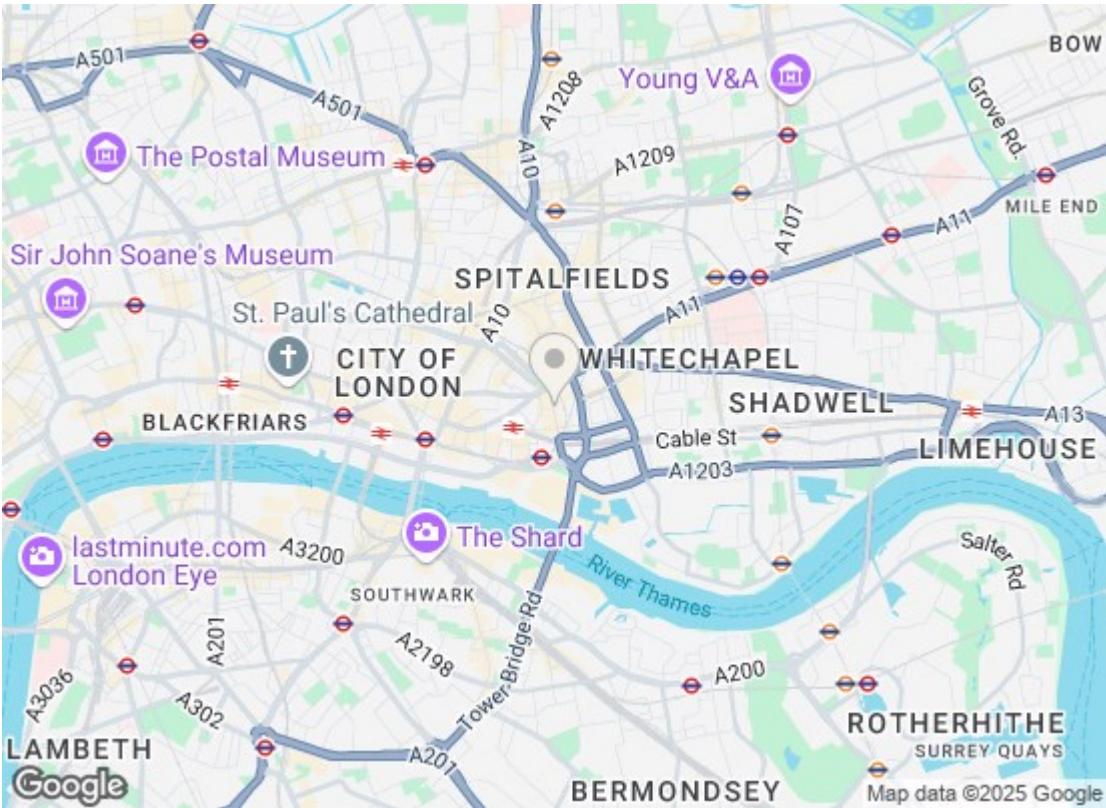
LOBBY



Approximate Gross Internal Area 404 sq ft – 38 sq m



Although Pink Plan Ltd ensures the highest level of accuracy, measurements of doors, windows and rooms are approximate and no responsibility is taken for error, omission or misstatement. These plans are for representation purposes only as defined by RICS code of measuring practise. No guarantee is given on total square footage of the property within this plan. The figure icon is for initial guidance only and should not be relied on as a basis of valuation.



Energy Efficiency Rating		
	Current	Potential
Very energy efficient - lower running costs		
(92 plus) A		
(81-91) B	83	83
(69-80) C		
(55-68) D		
(39-54) E		
(21-38) F		
(1-20) G		
Not energy efficient - higher running costs		
England & Wales		EU Directive 2002/91/EC
Environmental Impact (CO <sub>2</sub> ) Rating		
	Current	Potential
Very environmentally friendly - lower CO <sub>2</sub> emissions		
(92 plus) A		
(81-91) B		
(69-80) C		
(55-68) D		
(39-54) E		
(21-38) F		
(1-20) G		
Not environmentally friendly - higher CO <sub>2</sub> emissions		
England & Wales		EU Directive 2002/91/EC

We have prepared these property particulars as a general guide to a broad description of the property. They are not intended to constitute part of an offer or contract. We have not carried out a structural survey and the services, appliances and specific fittings have not been tested. All photographs, measurements, floorplans and distances referred to are given as a guide only and should not be relied upon for the purchase of carpets or any other fixtures or fittings. Lease details, service charges and ground rent (where applicable) and council tax are given as a guide only and should be checked and confirmed by your Solicitor prior to exchange of contracts.