



Skyline Plaza, Commercial Road, London, E1 1NY

£470 Per Week

A 2 double bedroom apartment for rent within one of the City's sought after developments 'THE SKYLINE PLAZA BUILDING' E1.

Great views from its South facing windows, 2 double bedrooms, semi open planed living room, fitted kitchen, wooden flooring, day concierge and residents roof terrace commanding some of the best views across London.

Very short walk to Aldgate East tube station.

Comes furnished.

THIS PROPERTY IS AVAILABLE FROM 20.06.2025

- 2 Double Bedrooms
- By Aldgate East Tube Station
- Residents Roof Garden
- South Facing City Views
- Third Floor
- Day Concierge
- Central City Location E1
- Comes Furnished
- Available From 20.06.2025

Skyline Plaza, Commercial Road, London, E1 1NY



SKYLINE PLAZA BUILDING



KITCHEN



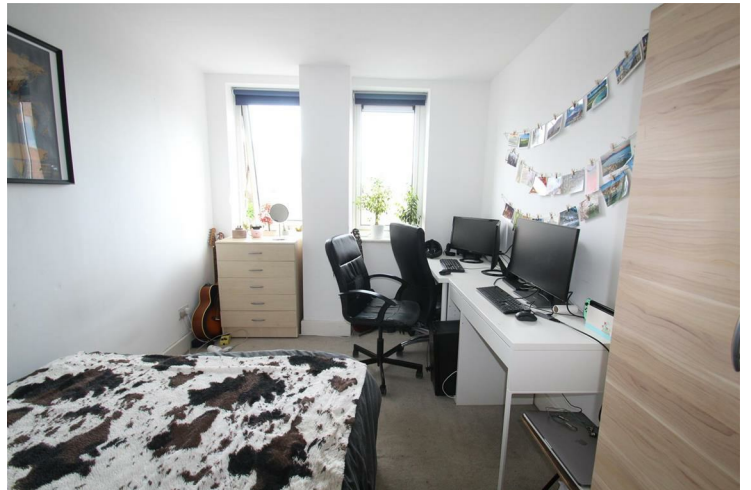
LIVING SPACE



BATHROOM



BEDROOM ONE



BEDROOM TWO

Skyline Plaza, Commercial Road, London, E1 1NY



ROOF TERRACE



COMMUNAL AREA VIEW



ROOF TERRACE VIEW



LIVING SPACE VIEW



COMMUNAL AREA

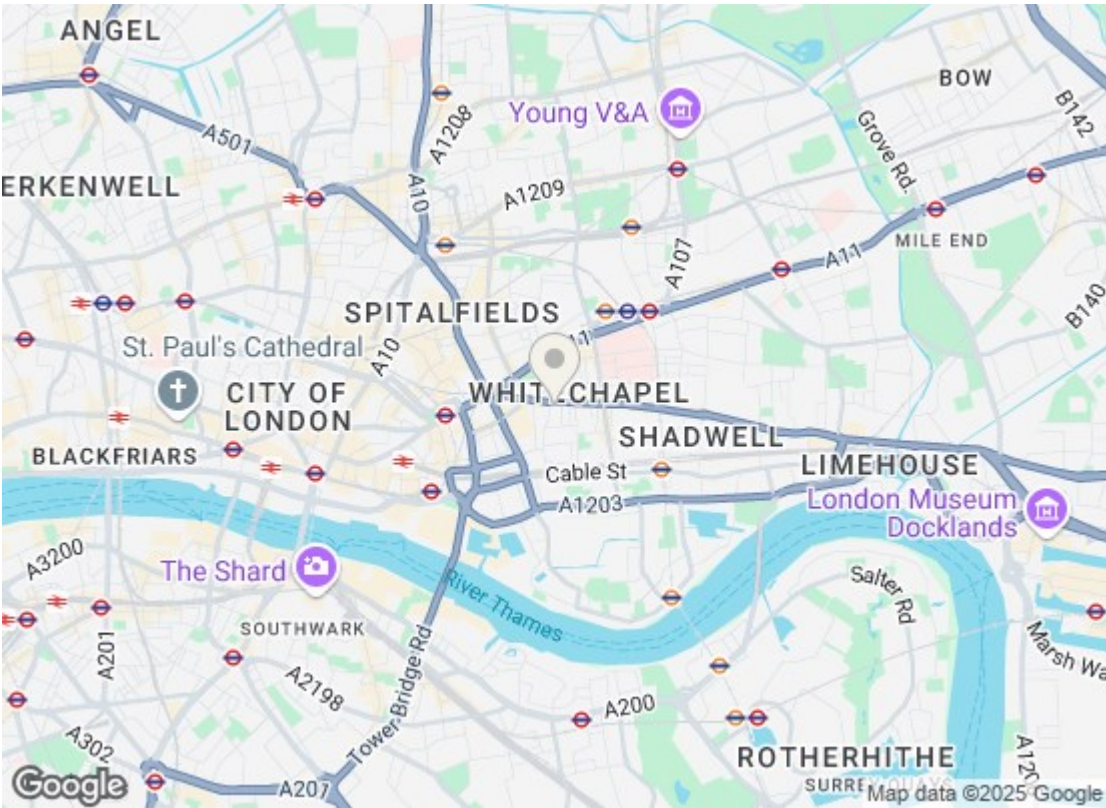




RECEPTION ROOM

Skyline Plaza, Commercial Road, London, E1 1NY



BEDROOM TWO VIEW



Energy Efficiency Rating		Current	Potential
Very energy efficient - lower running costs		<div>78</div>	<div>84</div>
(92 plus) A			
(81-91) B			
(69-80) C			
(55-68) D			
(39-54) E			
(21-38) F			
(1-20) G			
Not energy efficient - higher running costs			
England & Wales		EU Directive 2002/91/EC	
England 			
Environmental Impact (CO ₂) Rating			
Very environmentally friendly - lower CO ₂ emissions		Current	Potential
(92 plus) A			
(81-91) B			
(69-80) C			
(55-68) D			
(39-54) E			
(21-38) F			
(1-20) G			
Not environmentally friendly - higher CO ₂ emissions			
England & Wales		EU Directive 2002/91/EC	
England 			

We have prepared these property particulars as a general guide to a broad description of the property. They are not intended to constitute part of an offer or contract. We have not carried out a structural survey and the services, appliances and specific fittings have not been tested. All photographs, measurements, floorplans and distances referred to are given as a guide only and should not be relied upon for the purchase of carpets or any other fixtures or fittings. Lease details, service charges and ground rent (where applicable) and council tax are given as a guide only and should be checked and confirmed by your Solicitor prior to exchange of contracts.