



37 Clarendon Road, Watford, WD17 1DJ

£399 Per Week

THE CLARENDON, CLARENDON ROAD, WATFORD WD17

ONE OF THE TALLEST & MOST LUXURIOUS RESIDENTIAL TOWERS IN THE AREA OFFERING RESIDENTS AMENITIES SUCH AS GYM, CINEMA, 24 HOUR CONCIERGE, CLUB LOUNGE, CAFE & 24 HOUR CONCIERGE SERVICES

A 13TH FLOOR ONE BEDROOM SET OVER 549 SQUARE FEET WITH A WEST FACING ASPECT

FURNISHED AND AVAILABLE NOW

- BRAND NEW APARTMENT
- HOTEL STYLE FACILITIES
- LOCATED ON THE 13TH FLOOR
- LUXURY KITCHEN AND BATHROOM SUITE
- LOCATED IN THE CENTER OF WATFORD WD17
- 24 HOUR CONCIERGE, RES GYM, CINEMA, CLUB LOUNGE & CAFE
- SPACIOUS ONE BEDROOM APARTMENT
- MINS FROM STATION (FAST TRAIN TO LONDON 15 MINS)
- 25 STOREY RESIDENTIAL TOWER WITH LUXURY FINISHES
- WEST FACING

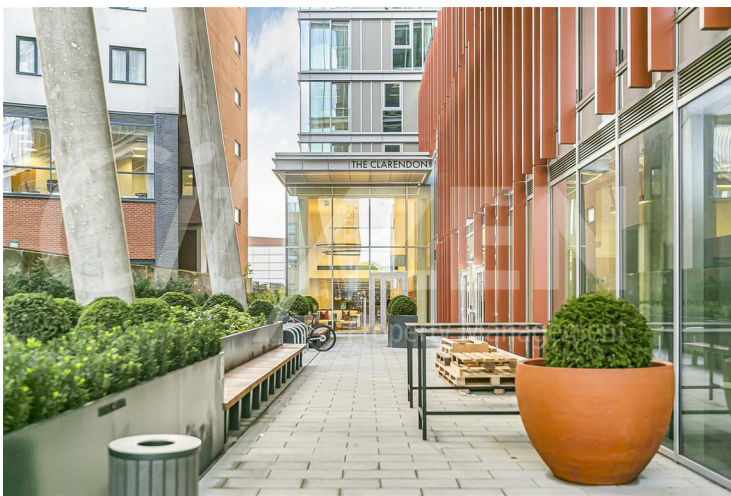
37 Clarendon Road, Watford, WD17 1DJ



ENTRANCE



GYM



ENTRANCE



GYM



CINEMA



THE CLARENDON



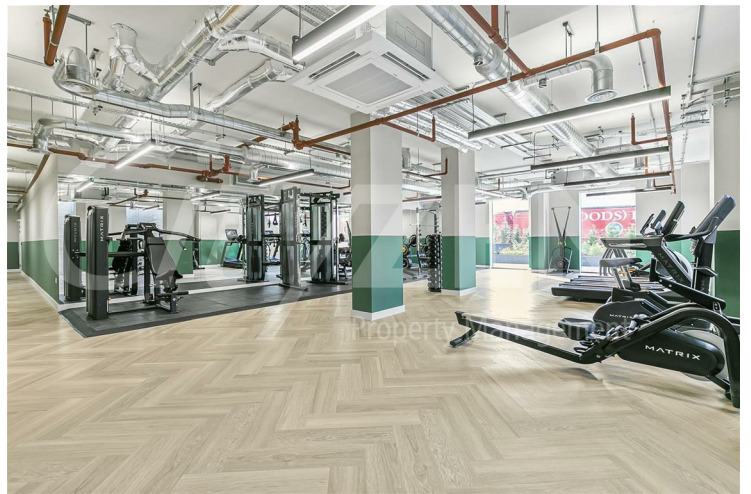
THE CLARENDON



CINEMA



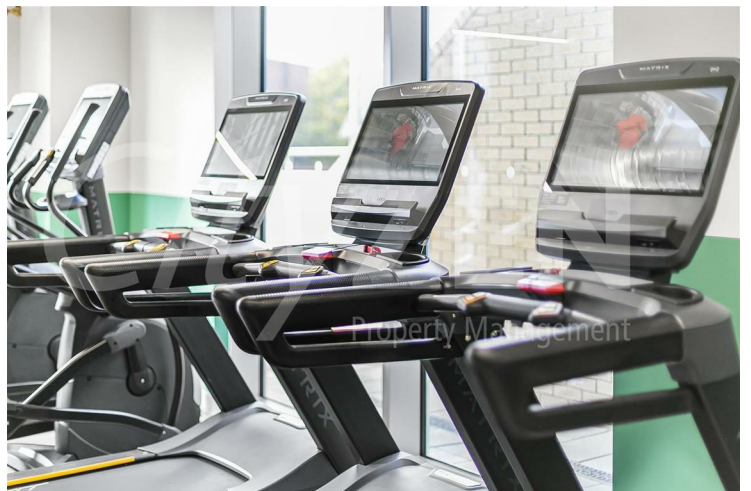
CINEMA



GYM



CINEMA



GYM



GYM



CONCIERGE



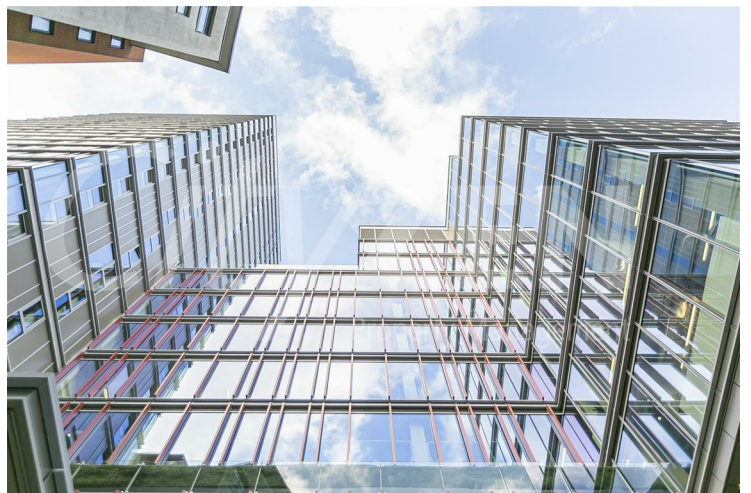
LOBBY



LOBBY



LOBBY



THE CLARENDON



ROOF GARDEN



ROOF GARDEN



ROOF GARDEN



THE CLARENDON



ROOF GARDEN



ROOF GARDEN

37 Clarendon Road, Watford, WD17 1DJ



THE CLARENDON



BEDROOM



ROOF GARDEN



KITCHEN



RECEPTION



BATHROOM



WELL FURNISHED



WELL FURNISHED



BEDROOM



RECEPTION

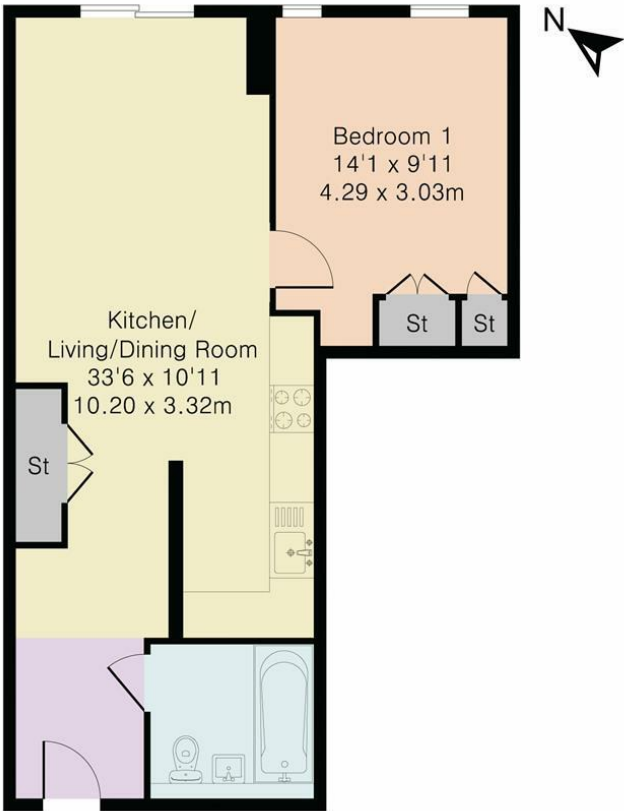


AMPLE BUILT IN STORAGE



BATHROOM

Approximate Gross Internal Area 545 sq ft - 51 sq m



Although Pink Plan Ltd ensures the highest level of accuracy, measurements of doors, windows and rooms are approximate and no responsibility is taken for error, omission or misstatement. These plans are for representation purposes only as defined by RICS code of measuring practise. No guarantee is given on total square footage of the property within this plan. The figure icon is for initial guidance only and should not be relied on as a basis of valuation.



| Energy Efficiency Rating | | |
|---|---------|-----------|
| | Current | Potential |
| Very energy efficient - lower running costs | | |
| (92 plus) A | | |
| (81-91) B | | |
| (69-80) C | | |
| (55-68) D | | |
| (39-54) E | | |
| (21-38) F | | |
| (1-20) G | | |
| Not energy efficient - higher running costs | | |
| England & Wales EU Directive 2002/91/EC | | |
| Environmental Impact (CO ₂) Rating | | |
| | Current | Potential |
| Very environmentally friendly - lower CO ₂ emissions | | |
| (92 plus) A | | |
| (81-91) B | | |
| (69-80) C | | |
| (55-68) D | | |
| (39-54) E | | |
| (21-38) F | | |
| (1-20) G | | |
| Not environmentally friendly - higher CO ₂ emissions | | |
| England & Wales EU Directive 2002/91/EC | | |

We have prepared these property particulars as a general guide to a broad description of the property. They are not intended to constitute part of an offer or contract. We have not carried out a structural survey and the services, appliances and specific fittings have not been tested. All photographs, measurements, floorplans and distances referred to are given as a guide only and should not be relied upon for the purchase of carpets or any other fixtures or fittings. Lease details, service charges and ground rent (where applicable) and council tax are given as a guide only and should be checked and confirmed by your Solicitor prior to exchange of contracts.