



Goldsmiths Apartments, 7 Brigadier Walk, Woolwich, SE18 6YF

£600 Per Week

JUST COMPLETED & READY FOR OCCUPATION

RIVER VIEWS FROM ALL ROOMS
TWO BEDROOM TWO BATHROOM APARTMENT IN GOLDSMITHS APARTMENTS
ROYAL ARSENAL SE18
4TH FLOOR
OVER 800 SQUARE FEET
BALCONY
FURNISHED TO A HIGH STANDARD
FULL USE OF THE WATERSIDE CLUB POOL, GYM & SPA

AVAILABLE NOW
FURNISHED

- JUST COMPLETED AND READY FOR OCCUPATION
- GOLDSMITHS APARTMENTS
- OVER 800 SQUARE FEET
- FULL USE OF WATERSIDE CLUB INC POOL & GYM
- RIVER VIEWS FROM ALL ROOMS
- PART OF "ROYAL ARSENAL" SE18
- CALL NOW FOR A VIEWING
- TWO BEDS & TWO BATHS
- ON SITE STATION & RESTAURANTS/BARS
- 4TH FLOOR

Goldsmiths Apartments, 7 Brigadier Walk, Woolwich, SE18 6YF



RECEPTION



BEDROOM



RECEPTION



RECEPTION



BEDROOM



RECEPTION

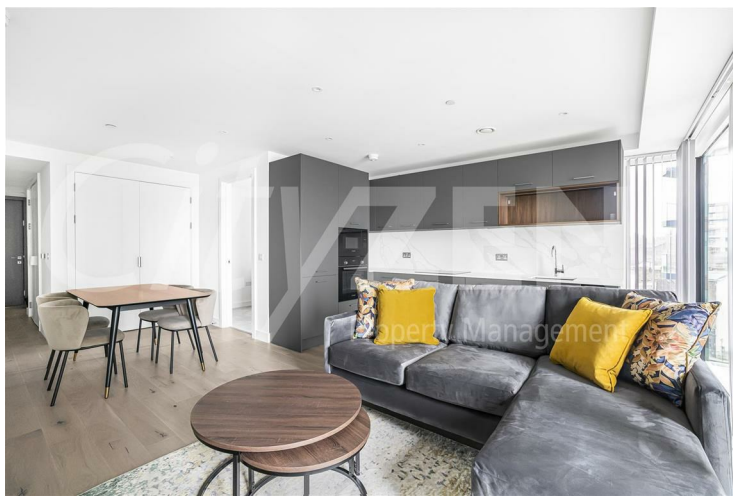
Goldsmiths Apartments, 7 Brigadier Walk, Woolwich, SE18 6YF



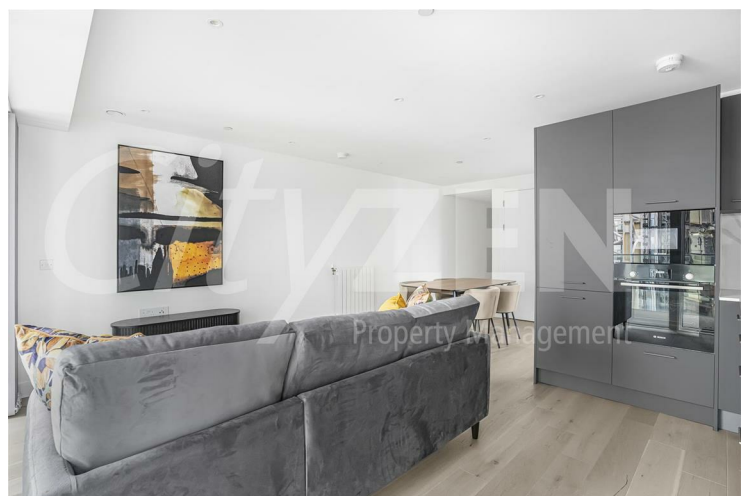
KITCHEN



RECEPTION



RECEPTION



RECEPTION



RECEPTION

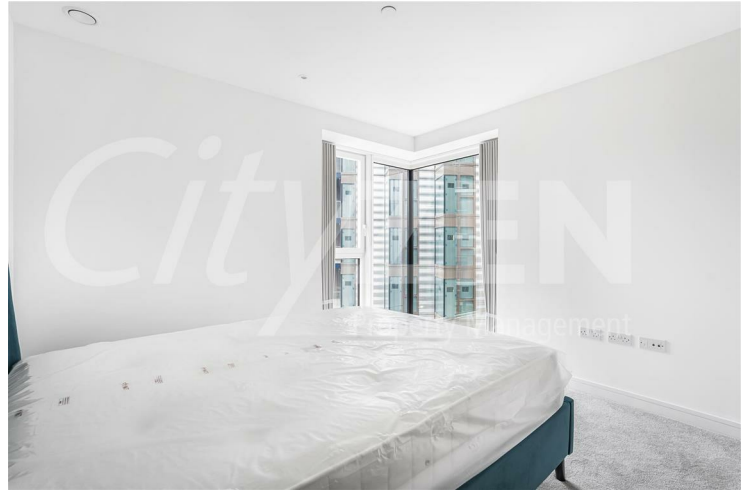


KITCHEN

Goldsmiths Apartments, 7 Brigadier Walk, Woolwich, SE18 6YF



RECEPTION



BEDROOM



RECEPTION



BEDROOM



RECEPTION



BEDROOM

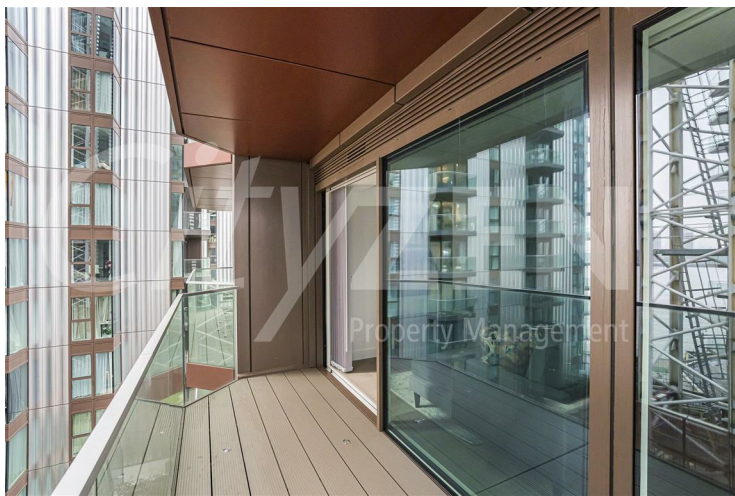
Goldsmiths Apartments, 7 Brigadier Walk, Woolwich, SE18 6YF



BEDROOM



BATHROOM



BALCONY

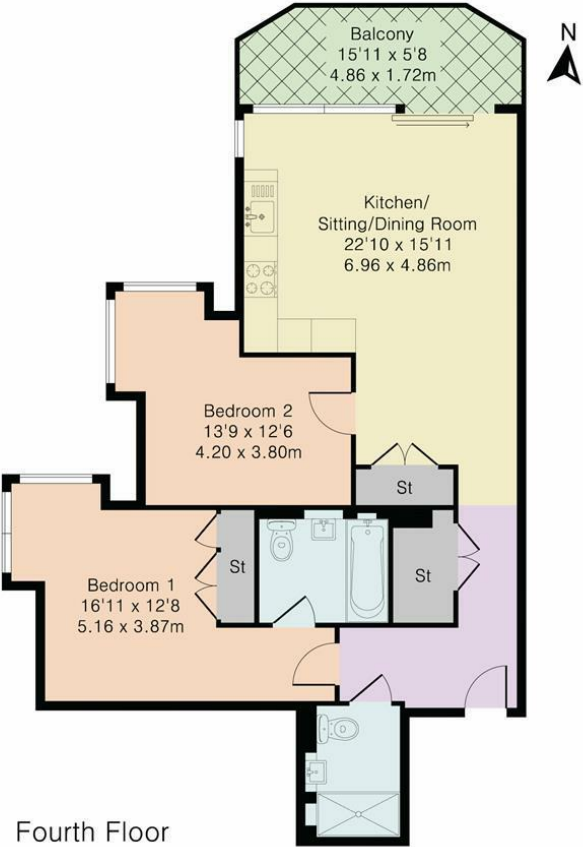


BATHROOM



BATHROOM

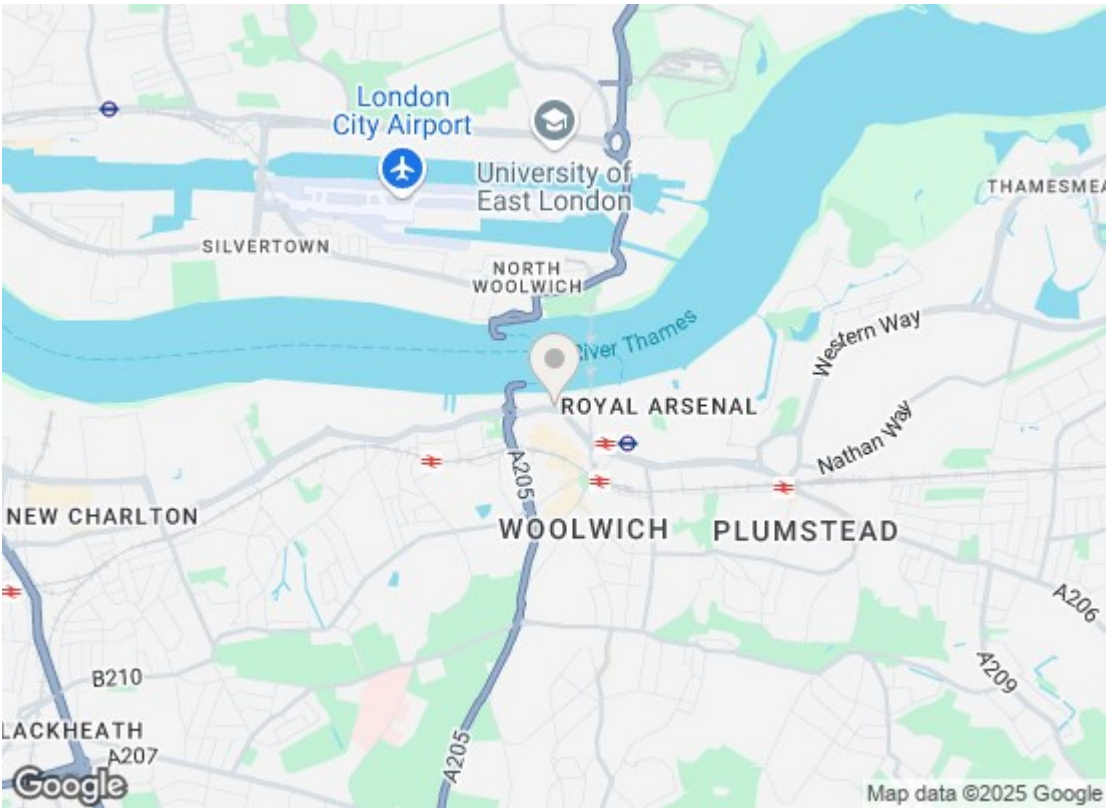
Approximate Gross Internal Area 818 sq ft - 76 sq m



Fourth Floor



Although Pink Plan Ltd ensures the highest level of accuracy, measurements of doors, windows and rooms are approximate and no responsibility is taken for error, omission or misstatement. These plans are for representation purposes only as defined by RICS code of measuring practise. No guarantee is given on total square footage of the property within this plan. The figure icon is for initial guidance only and should not be relied on as a basis of valuation.



Energy Efficiency Rating		
	Current	Potential
Very energy efficient - lower running costs		
(92 plus) A		
(81-91) B	86	86
(69-80) C		
(55-68) D		
(39-54) E		
(21-38) F		
(1-20) G		
Not energy efficient - higher running costs		
England & Wales EU Directive 2002/91/EC		
Environmental Impact (CO ₂) Rating		
	Current	Potential
Very environmentally friendly - lower CO ₂ emissions		
(92 plus) A		
(81-91) B		
(69-80) C		
(55-68) D		
(39-54) E		
(21-38) F		
(1-20) G		
Not environmentally friendly - higher CO ₂ emissions		
England & Wales EU Directive 2002/91/EC		

We have prepared these property particulars as a general guide to a broad description of the property. They are not intended to constitute part of an offer or contract. We have not carried out a structural survey and the services, appliances and specific fittings have not been tested. All photographs, measurements, floorplans and distances referred to are given as a guide only and should not be relied upon for the purchase of carpets or any other fixtures or fittings. Lease details, service charges and ground rent (where applicable) and council tax are given as a guide only and should be checked and confirmed by your Solicitor prior to exchange of contracts.