



Avon Court, Clyde square Dod Street, London, E14 7EQ

£415 Per Week

AN UNUSUAL SPLIT LEVEL ONE BEDROOM APARTMENT WITHIN WAREHOUSE CONVERSION WITH FEATURE SPIRAL STAIRCASE LEADING TO THE BEDROOM

Royal Quay is located on the Limehouse Cut Canal, within short walking distance of Canary Wharf and the DLR station.

Top specification throughout, open plan living room with luxury fitted kitchen, metal spiral staircase, large warehouse feature windows, fitted bedroom, solid wood flooring and luxury shower room suite.

Comes furnished. Day concierge.

PROPERTY AVAILABLE FROM 20.11.2024

- CANAL SIDE APARTMENT
- FEATURE IRON STAIRCASE
- WELL APPOINTED KITCHEN
- WALK TO DLR/CANARY WHF
- ONE BEDROOM
- CONCIERGE
- MODERN BATHROOM
- SPLIT LEVEL FLAT
- FITTED BEDROOM
- WAREHOUSE CONVERSION

Avon Court, Clyde square Dod Street, London, E14 7EQ



Reception room



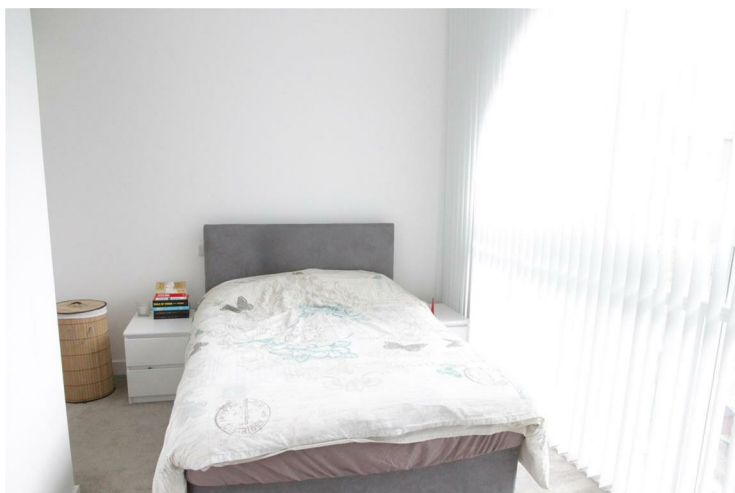
Shower room



Kitchen



Concierge



Bedroom



Royal Quay

Avon Court, Clyde square Dod Street, London, E14 7EQ



Royal Quay



Limehouse DLR



Royal Quay



Mile End Station



Westferry DLR

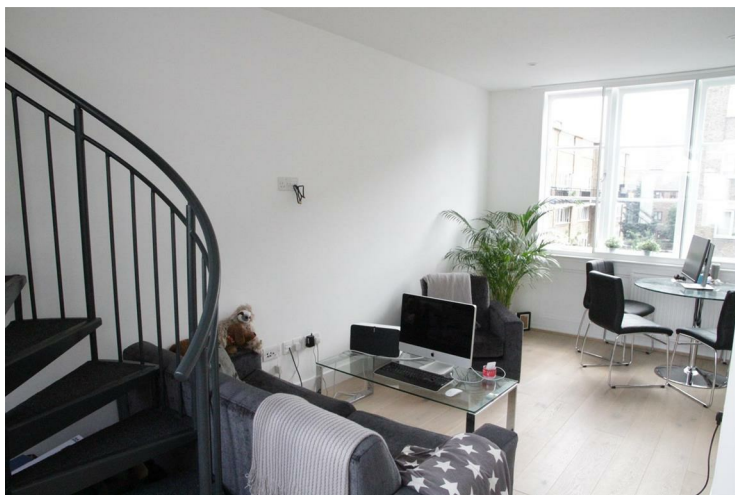


Bedroom

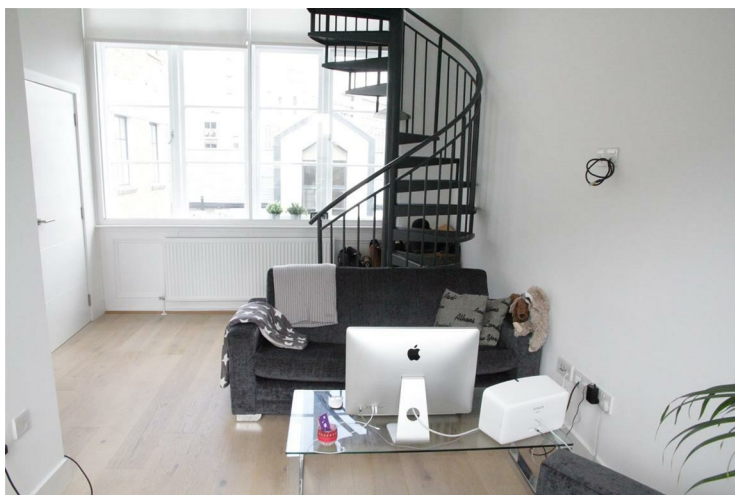
Avon Court, Clyde square Dod Street, London, E14 7EQ



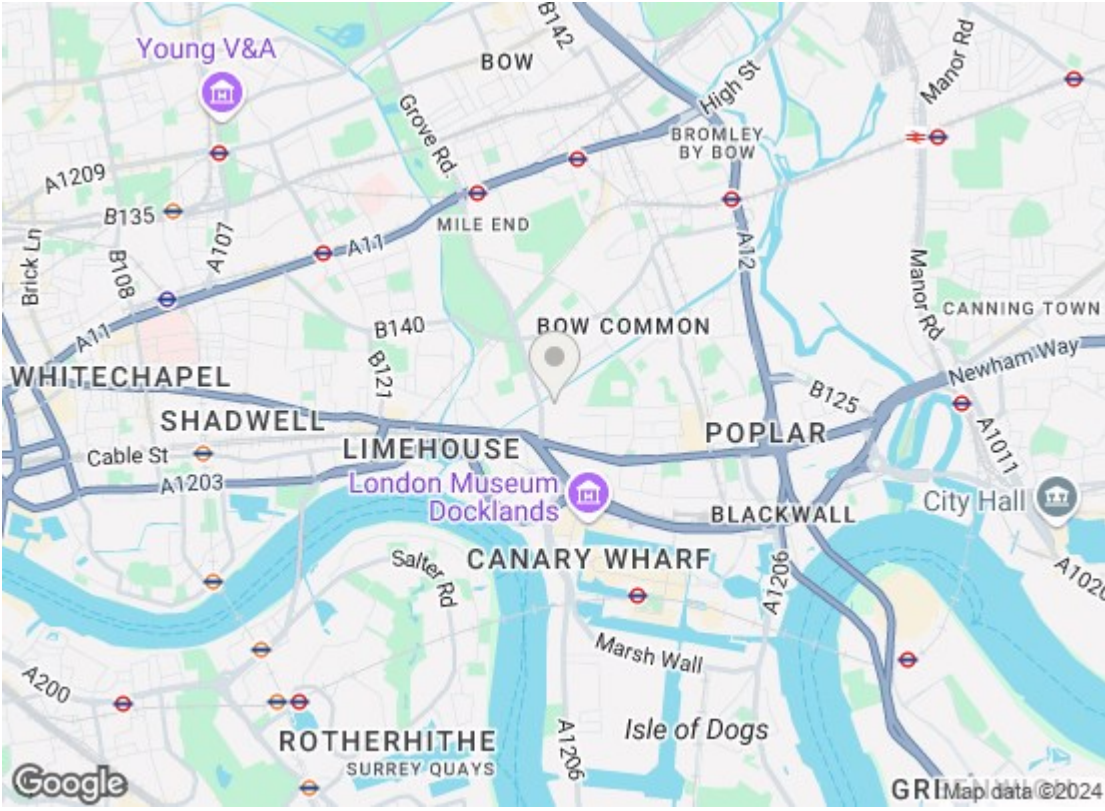
WC



Reception room



Reception Room



Energy Efficiency Rating		
	Current	Potential
Very energy efficient - lower running costs		
(92 plus) A		
(81-91) B		
(69-80) C		
(55-68) D	65	65
(39-54) E		
(21-38) F		
(1-20) G		
Not energy efficient - higher running costs		
EU Directive 2002/91/EC		
Environmental Impact (CO ₂) Rating		
	Current	Potential
Very environmentally friendly - lower CO ₂ emissions		
(92 plus) A		
(81-91) B		
(69-80) C		
(55-68) D		
(39-54) E		
(21-38) F		
(1-20) G		
Not environmentally friendly - higher CO ₂ emissions		
EU Directive 2002/91/EC		

We have prepared these property particulars as a general guide to a broad description of the property. They are not intended to constitute part of an offer or contract. We have not carried out a structural survey and the services, appliances and specific fittings have not been tested. All photographs, measurements, floorplans and distances referred to are given as a guide only and should not be relied upon for the purchase of carpets or any other fixtures or fittings. Lease details, service charges and ground rent (where applicable) and council tax are given as a guide only and should be checked and confirmed by your Solicitor prior to exchange of contracts.