



Viadux, Great Bridgewater Street, Manchester, M1 5NZ

£450 Per Week

MANCHESTER'S MOST PRESTIGIOUS DEVELOPMENT YET

THE VIADUX MANCHESTER M1

AVAILABLE NOW

SELECTION OF TWO BEDROOM TWO BATHROOM APARTMENTS TO RENT FROM £1,950 PER MONTH

AVAILABILITY ON VARIOUS FLOORS

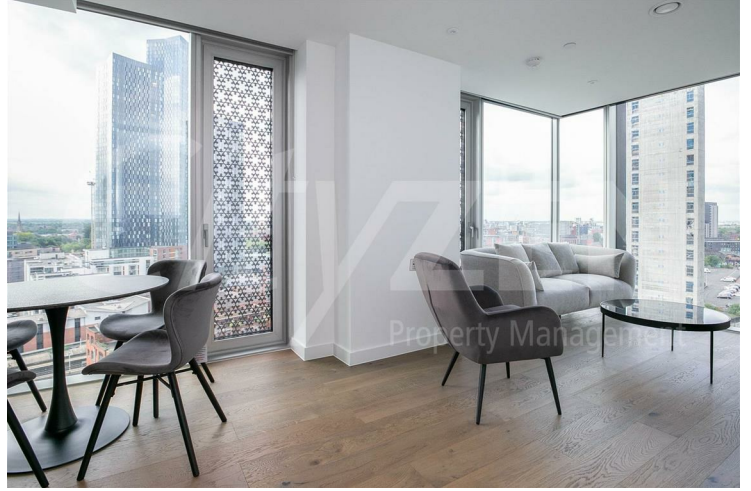
HOTEL STYLE AMENITIES INC: RESIDENTS POOL, GYM, SPA, LOUNGE, BAR, WORKSPACES, CINEMA & EVEN A KARAOKE ROOM!

- COMPLETING NOW
- LATEST "SALBOY" LUXURY DEVELOPMENT
- PRICES FROM £1,950 PER MONTH
- VIEWS ACROSS CITY CENTRE SKYLINE
- BRAND NEW LUX TWO BED TWO BATHS AVAILABLE TO RENT
- HOTEL STYLE FACILITIES INC POOL, GYM, CINEMA, CONCIERGE
- ALL APARTMENTS FURNISHED
- THE VIADUX M1
- DIRECT ACCESS TO METROLINK
- APARTMENTS AVAIL ON VARIOUS FLOORS

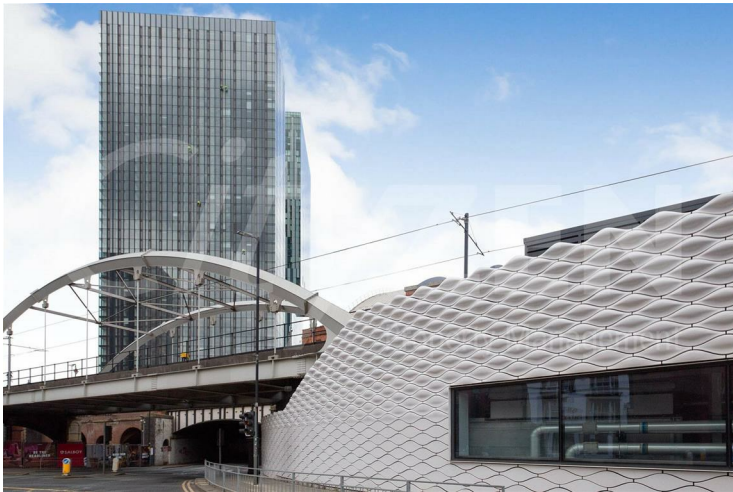
Viadux, Great Bridgewater Street, Manchester, M1 5NZ



VIADUX



TYPICAL TWO BED



VIADUX



TYPICAL TWO BED

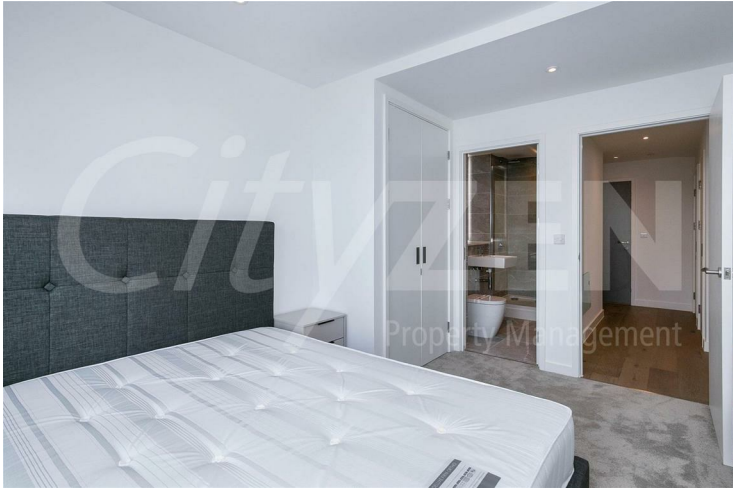


VIADUX



TYPICAL TWO BED

Viadux, Great Bridgewater Street, Manchester, M1 5NZ



TYPICAL TWO BED



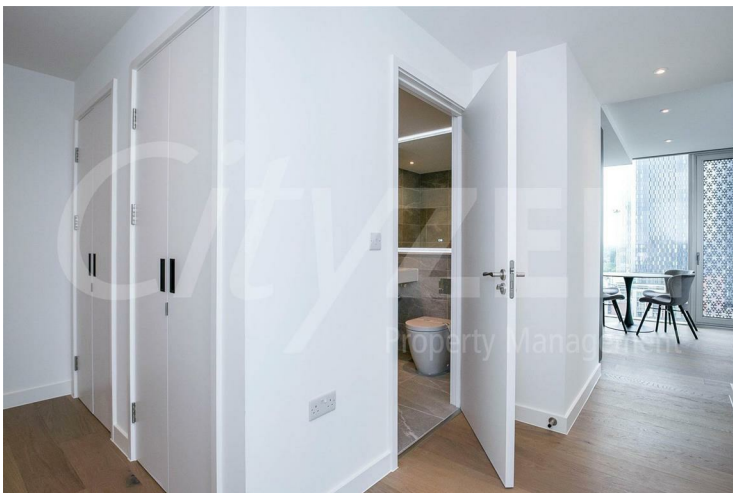
TYPICAL TWO BED



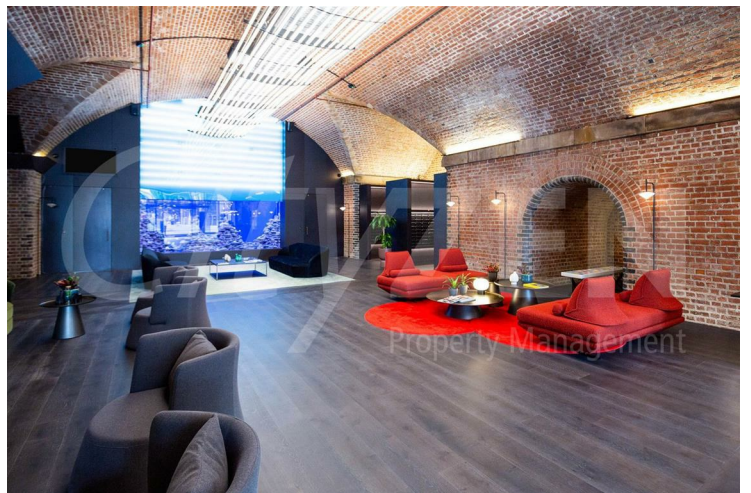
TYPICAL TWO BED



TYPICAL TWO BED

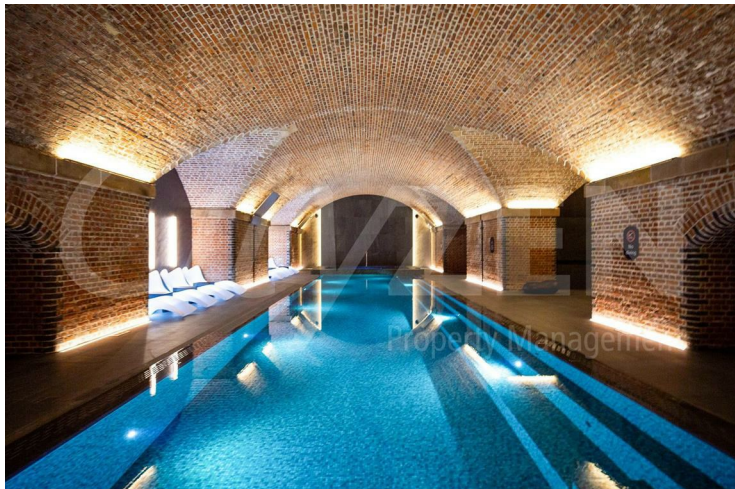


TYPICAL TWO BED



RESIDENTS FACILITIES

Viadux, Great Bridgewater Street, Manchester, M1 5NZ



RESIDENTS FACILITIES



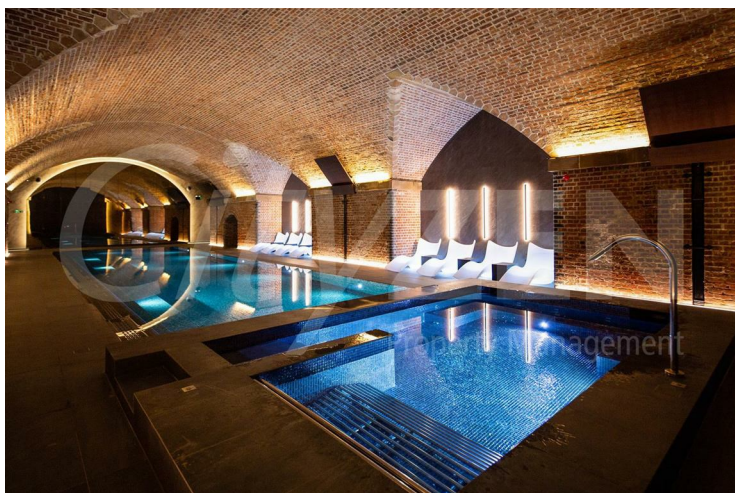
RESIDENTS FACILITIES



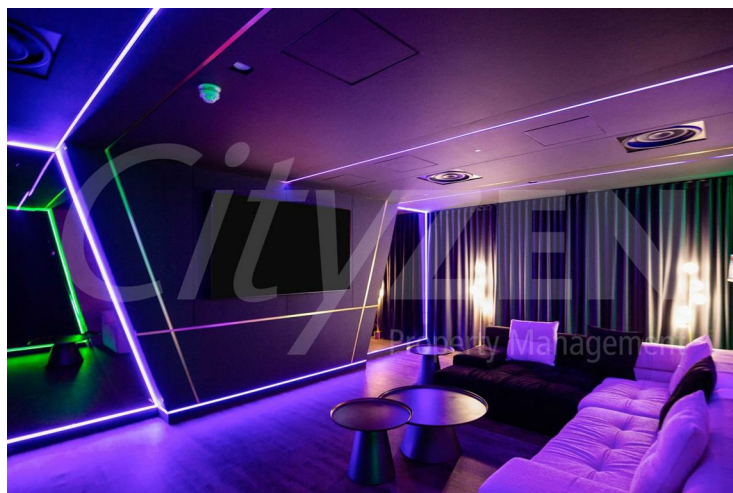
RESIDENTS FACILITIES



RESIDENTS FACILITIES



RESIDENTS FACILITIES

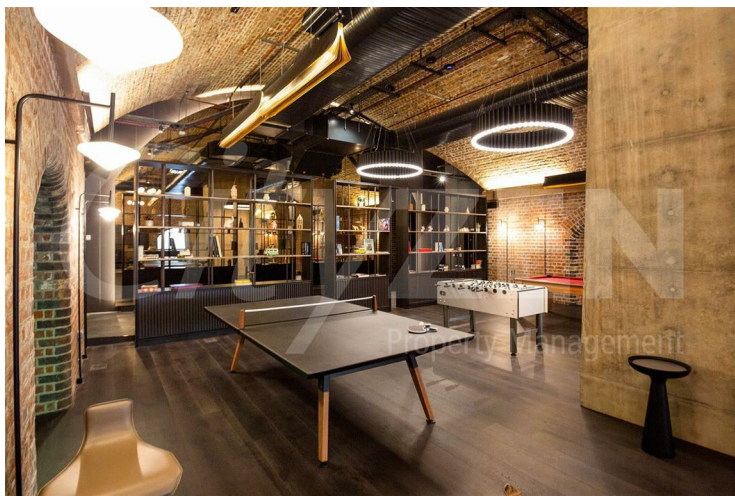


RESIDENTS FACILITIES

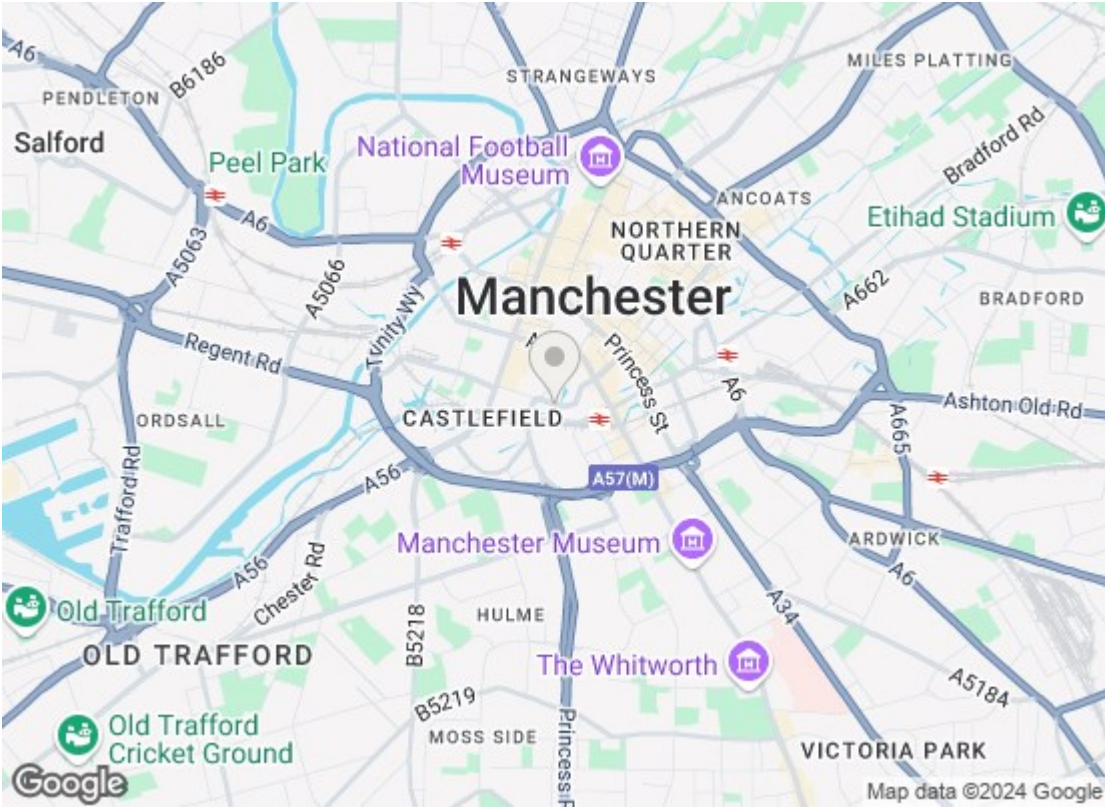
Viadux, Great Bridgewater Street, Manchester, M1 5NZ



RESIDENTS FACILITIES



RESIDENTS FACILITIES



Energy Efficiency Rating		
	Current	Potential
Very energy efficient - lower running costs		
(92 plus) A		
(81-91) B		
(69-80) C		
(55-68) D		
(39-54) E		
(21-38) F		
(1-20) G		
Not energy efficient - higher running costs		
EU Directive 2002/91/EC		
Environmental Impact (CO ₂) Rating		
	Current	Potential
Very environmentally friendly - lower CO ₂ emissions		
(92 plus) A		
(81-91) B		
(69-80) C		
(55-68) D		
(39-54) E		
(21-38) F		
(1-20) G		
Not environmentally friendly - higher CO ₂ emissions		
EU Directive 2002/91/EC		

We have prepared these property particulars as a general guide to a broad description of the property. They are not intended to constitute part of an offer or contract. We have not carried out a structural survey and the services, appliances and specific fittings have not been tested. All photographs, measurements, floorplans and distances referred to are given as a guide only and should not be relied upon for the purchase of carpets or any other fixtures or fittings. Lease details, service charges and ground rent (where applicable) and council tax are given as a guide only and should be checked and confirmed by your Solicitor prior to exchange of contracts.