



Rosewood Building, Cremer Street, London, E2 8GX

£745,000

A 2 DOUBLE BEDROOM APARTMENT FOR SALE LOCATED IN THE SOUGHT AFTER SHOREDITCH EXCHANGE DEVELOPMENT.

The apartment faces South towards the internal gardens and has a spacious terrace which can be accessed from both of the bedrooms and the lounge.

The Shoreditch vibe is continued inside the apartment with designer bathrooms and kitchens as well as its interior designed furnishings. The designer communal areas include gym, cinema, residents lounge/library and roof gardens with City views. A 24 hour concierge is also at your service.

The accommodation comprises a spacious and bright lounge with access to a South facing terrace, open access to a fully fitted kitchen, all bedrooms are fitted with storage and have access to the terrace as well as use of a designer family bathroom off the hallway.

Service charge £4224 per annum
Ground rent £600 per annum
Lease: 996 years remaining

*The above information has been provided to Cityzen by the client but not verified and upon entering into a purchase you should instruct a lawyer to check this information.

- SHOREDITCH EXCHANGE E2
- ALL ROOMS ACCESS TERRACE
- 24 HR CONCIERGE
- 2 DOUBLE BEDROOMS
- SOUTH FACING TERRACE
- "SHOREDITCH" INTERIOR STYLING
- RESIDENTS ROOF GARDEN
- RESIDENTS GYM, CINEMA & LIBRARY

Rosewood Building, Cremer Street, London, E2 8GX

RECEPTION ROOM

KITCHEN

BEDROOM

RECEPTION ROOM

RECEPTION ROOM

BALCONY

BEDROOM

RESIDENTS LOBBY

RESIDENTS LIBRARY/LOUNGE

SHOREDITCH EXCHANGE

SHOREDITCH EXCHANGE

RESIDENTS GYM

RESIDENTS LIBRARY/LOUNGE

ROSEWOOD BUILDING

RESIDENTS GYM

RESIDENTS LOBBY

RESIDENTS LOBBY

BEDROOM

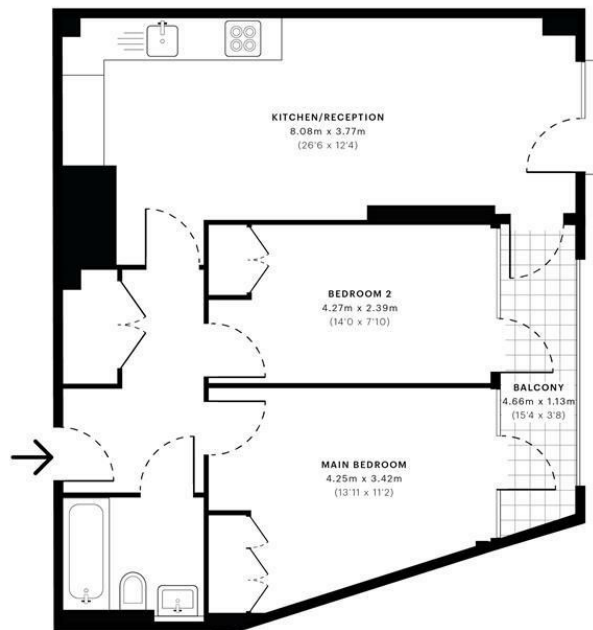
BEDROOM

BATHROOM

VIEW FROM BALCONY

RESIDENTS CINEMA

N ←



- Sixth Floor

GROSS INTERNAL AREA (GIA)
The footprint of the property

60.91 sqm / 655.63 sqft

NET INTERNAL AREA (NIA)
Excludes walls and external features
Includes walkways, restricted head height

57.81 sqm / 622.26 sqft

EXTERNAL STRUCTURAL FEATURES
Balconies, terraces, verandas etc.

4.91 sqm / 52.85 sqft

RESTRICTED HEAD HEIGHT
Limited use area under 1.5m

0.00 sqm / 0.00 sqft



Spec Verified floor plans are produced in accordance with Royal Institution of Chartered Surveyors' Property Measurement Standards. Plans and gardens are illustrative only and excluded from all area calculations. Due to rounding, numbers may not add up precisely. All measurements shown for the individual room lengths and widths are the maximum points of measurements captured in the scan.

IPMS 3B RESIDENTIAL 65.56 sqm / 705.68 sqft
IPMS 3C RESIDENTIAL 62.90 sqm / 677.05 sqft

src id: 5f9ace7b87c2fcb3e9233af

Energy Efficiency Rating

	Current	Potential
Very energy efficient - lower running costs		
(92 plus) A	87	87
(81-91) B		
(69-80) C		
(55-68) D		
(39-54) E		
(21-38) F		
(1-20) G		
Not energy efficient - higher running costs		

England & Wales

EU Directive 2002/91/EC

Environmental Impact (CO₂) Rating

	Current	Potential
Very environmentally friendly - lower CO ₂ emissions		
(92 plus) A		
(81-91) B		
(69-80) C		
(55-68) D		
(39-54) E		
(21-38) F		
(1-20) G		
Not environmentally friendly - higher CO ₂ emissions		

England & Wales

EU Directive 2002/91/EC

