



## Sinclair Road, London, W14 0BD

**£600 Per Week**

A ONE BEDROOM APARTMENT FOR RENT WITHIN A STYLISH BOUTIQUE DEVELOPMENT IN W14

The "Atelier" is Surrounded by period properties on a tree lined residential street this development by "Regal London" blends Victorian architecture with modern style and is located moments from Kensington Olympia and Kensington High Street

This 3rd floor apartment has an outlook over the communal gardens and comprises a spacious reception room, one double bedroom a luxury bathroom suite and benefits from a residents cinema, concierge service, communal gardens and a gymnasium featuring the latest Ergonomic Techno gym equipment.

Comes furnished.

PROPERTY AVAILABLE FROM 18.10.2024

- 1 BEDROOM APARTMENT
- AVAILABLE FROM 18.10.2024
- SOUTH ASPECT
- COMES FURNISHED
- CONCIERGE
- 3RD FLOOR
- MINS FROM KENSINGTON OLYMPIA
- VIEWS OF GARDEN SQUARE
- GYM & CINEMA
- WALK TO KENSINGTON HIGH ST

# Sinclair Road, London, W14 0BD



RESIDENTS GYM

RESIDENTS CINEMA



BEDROOM



CONCIERGE LOBBY



BEDROOM



THE ATELIER



BATHROOM

# Sinclair Road, London, W14 0BD



RECEPTION ROOM



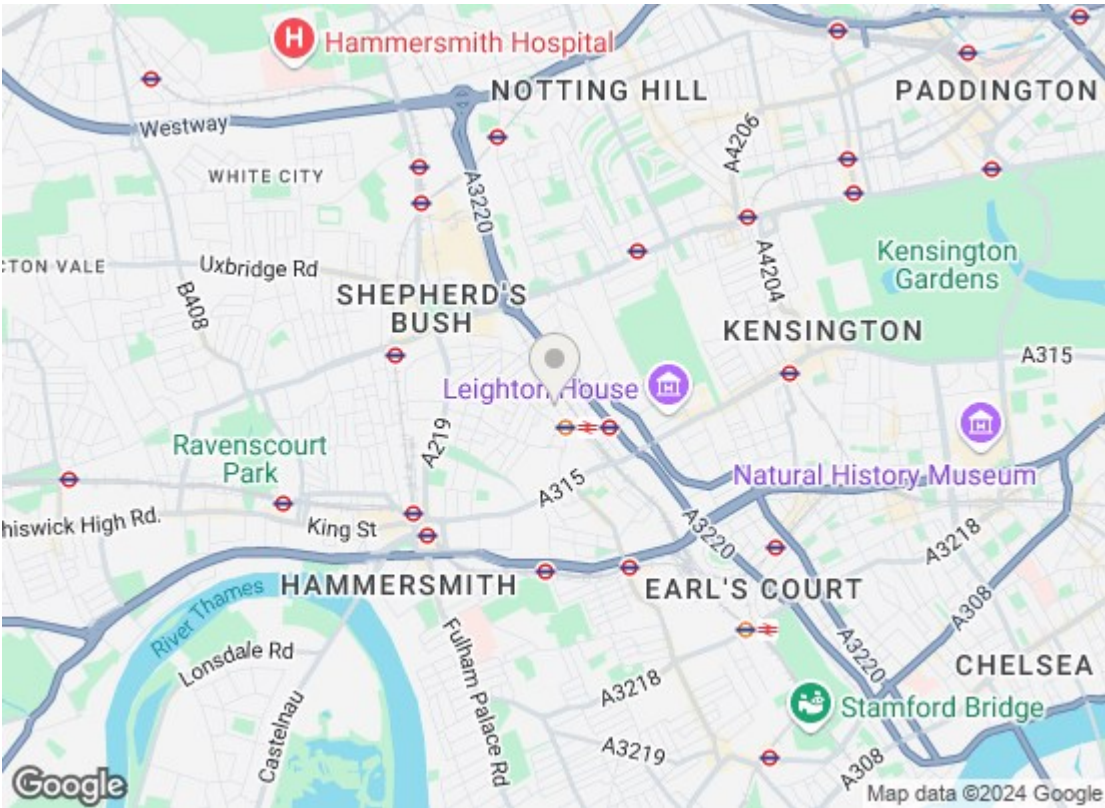
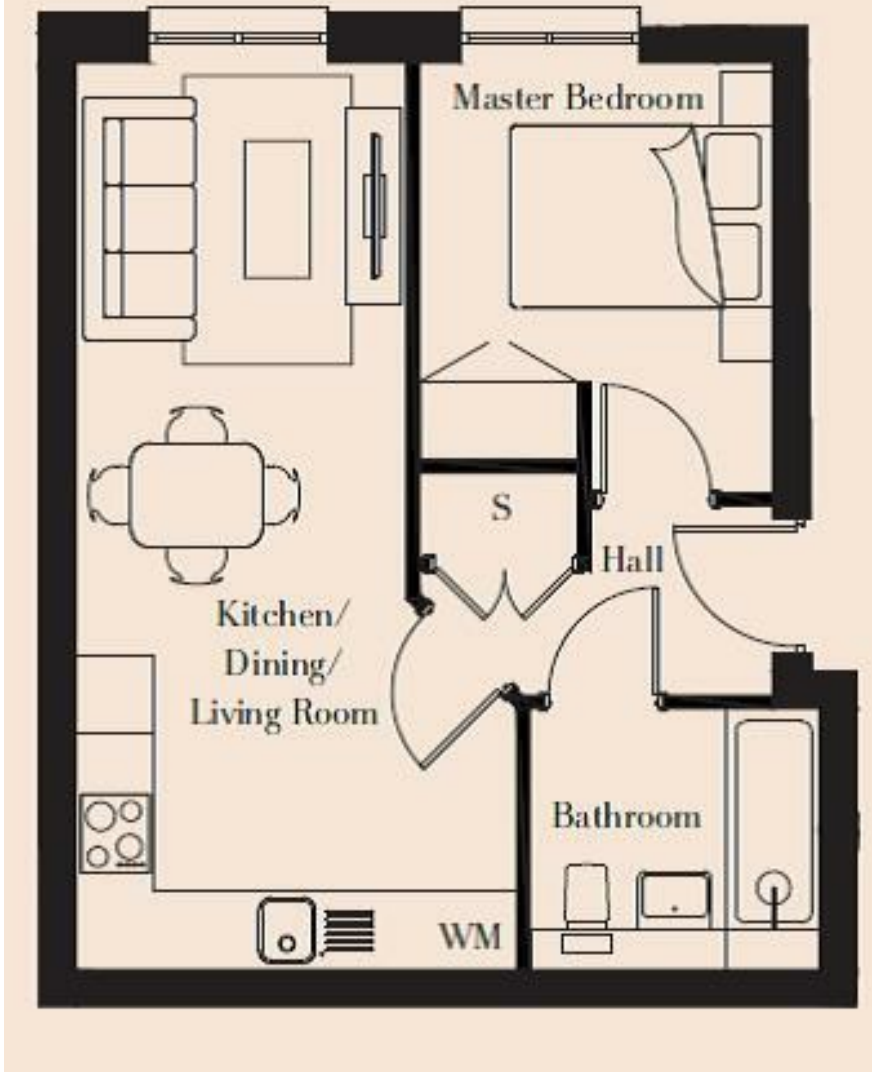
RESIDENTS GARDENS



KITCHEN



RECEPTION ROOM



Energy Efficiency Rating		
	Current	Potential
Very energy efficient - lower running costs		
(92 plus) <b>A</b>		
(81-91) <b>B</b>	<b>84</b>	<b>84</b>
(69-80) <b>C</b>		
(55-68) <b>D</b>		
(39-54) <b>E</b>		
(21-38) <b>F</b>		
(1-20) <b>G</b>		
Not energy efficient - higher running costs		
<b>England &amp; Wales</b>		EU Directive 2002/91/EC
Environmental Impact (CO <sub>2</sub> ) Rating		
	Current	Potential
Very environmentally friendly - lower CO <sub>2</sub> emissions		
(92 plus) <b>A</b>		
(81-91) <b>B</b>		
(69-80) <b>C</b>		
(55-68) <b>D</b>		
(39-54) <b>E</b>		
(21-38) <b>F</b>		
(1-20) <b>G</b>		
Not environmentally friendly - higher CO <sub>2</sub> emissions		
<b>England &amp; Wales</b>		EU Directive 2002/91/EC

We have prepared these property particulars as a general guide to a broad description of the property. They are not intended to constitute part of an offer or contract. We have not carried out a structural survey and the services, appliances and specific fittings have not been tested. All photographs, measurements, floorplans and distances referred to are given as a guide only and should not be relied upon for the purchase of carpets or any other fixtures or fittings. Lease details, service charges and ground rent (where applicable) and council tax are given as a guide only and should be checked and confirmed by your Solicitor prior to exchange of contracts.