



Duval house, Grant Road, London, SW11 2FR

£555 Per Week

A 1 BEDROOM APARTMENT FOR RENT WITHIN THIS SOUGHT AFTER DEVELOPMENT 'DUVAL HOUSE' SW11.

Duval house is part of the York gardens regeneration scheme and comprises of 93 apartments set in a 20 story tower minutes from Clapham Junction Station.

The development offers amenities including concierge, 20th floor residents roof garden and a secure bike store.

The generous accommodation is set over 685 square foot & comprises a dual aspect South/West facing lounge with a private South facing terrace. The kitchen is semi open plan located off the hallway, the master bedroom has ample storage and use of the luxury bathroom suite.

COMES UNFURNISHED ONLY.

AVAILABLE FROM 19.09.2024

- 1 BEDROOM
- MINS TO CLAPHAM JUNCTION
- SOUTH FACING BALCONY
- AVAILABLE FROM 19.09.2024
- 685 SQUARE FOOT
- RESIDENTS 20TH FLOOR ROOF GDN
- 24 HOUR CONCIERGE
- SOUTH WEST ASPECT
- ZONE 2 LOCATION
- COMES UNFURNISHED ONLY

Duval house, Grant Road, London, SW11 2FR



DUVAL HOUSE



KITCHEN



ENTRANCE TO BUILDING



RECEPTION ROOM VIEW



RECEPTION ROOM

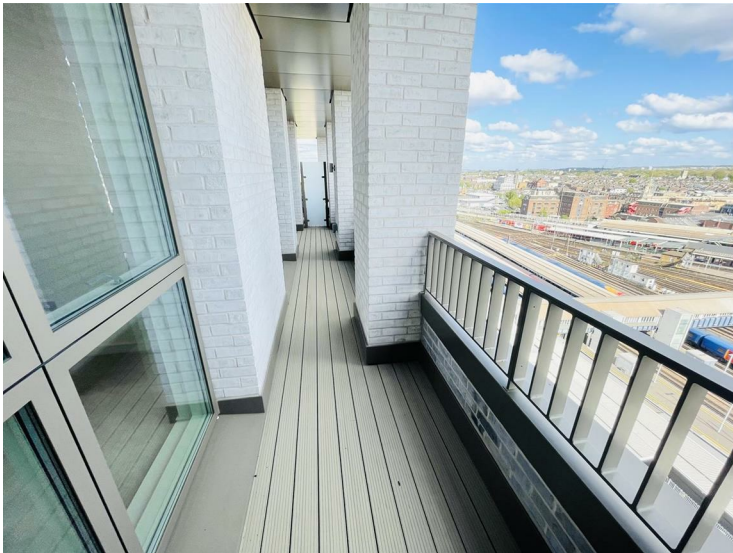


BEDROOM

Duval house, Grant Road, London, SW11 2FR



BATHROOM



TERRACE

