



## **Greenwich Court, Cavell Street, Whitechapel, E1 2BS**

**£360 Per Week**

A large and spacious 1 bedroom flat plus home office / study for rent within a period conversion located in Whitechapel E1.

Situated in a small Victorian block with lots of character, high ceilings, separate kitchen, additional study room and communal gardens.

Very short walk to Whitechapel tube station and a host of local amenities.

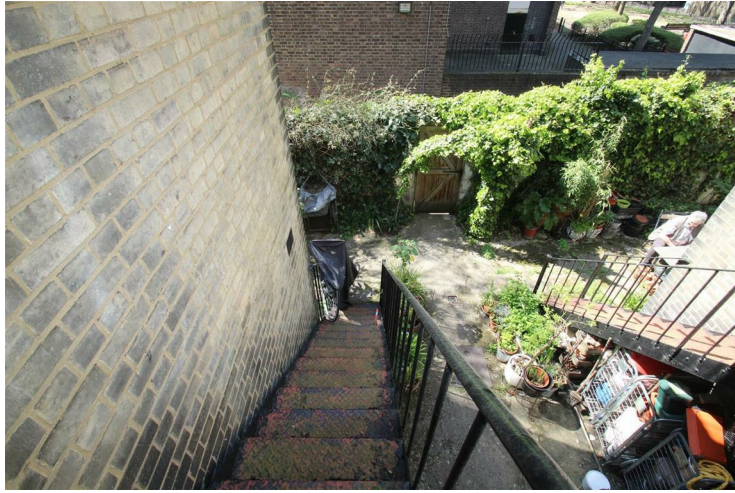
Easy access to the city.

Comes furnished.

PROPERTY AVAILABLE FROM 16.09.2024

- Large 1 Bedroom Flat
- Walk To Tube & Shops
- Separate Home office / Study
- Available From 16.09.2024
- Victorian Block
- Separate Kitchen
- Furnished
- High Ceilings

**Greenwich Court, Cavell Street, Whitechapel, E1 2BS**



**COMMUNAL GARDEN**



**BETHNAL GREEN STATION**



**ALDGATE STATION**



**SHADWELL STATION**



**BETHNAL GREEN OVERGROUND**



**WHITECHAPEL STATION**

# Greenwich Court, Cavell Street, Whitechapel, E1 2BS



ALDGATE EAST STATION



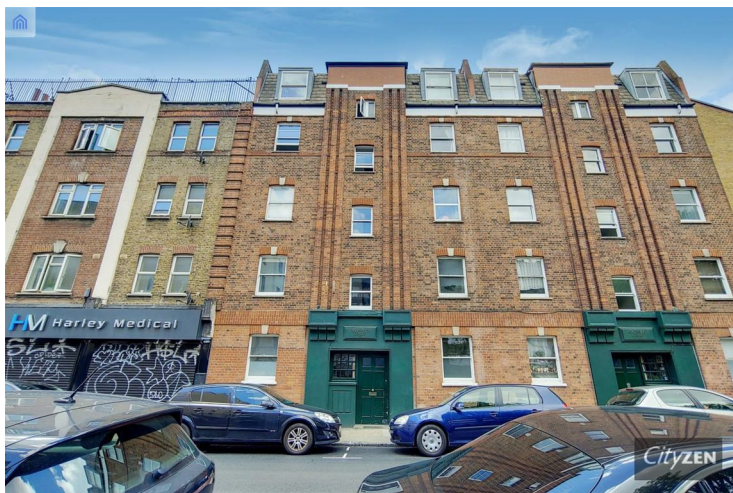
RECEPTION ROOM VIEW



ENTRANCE



RECEPTION ROOM



GREENWICH COURT



RECEPTION ROOM VIEW

# Greenwich Court, Cavell Street, Whitechapel, E1 2BS



BEDROOM VIEW



KITCHEN



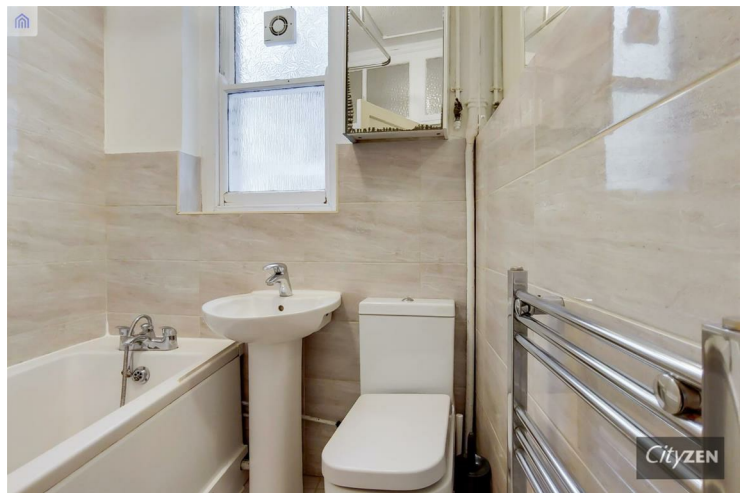
BEDROOM



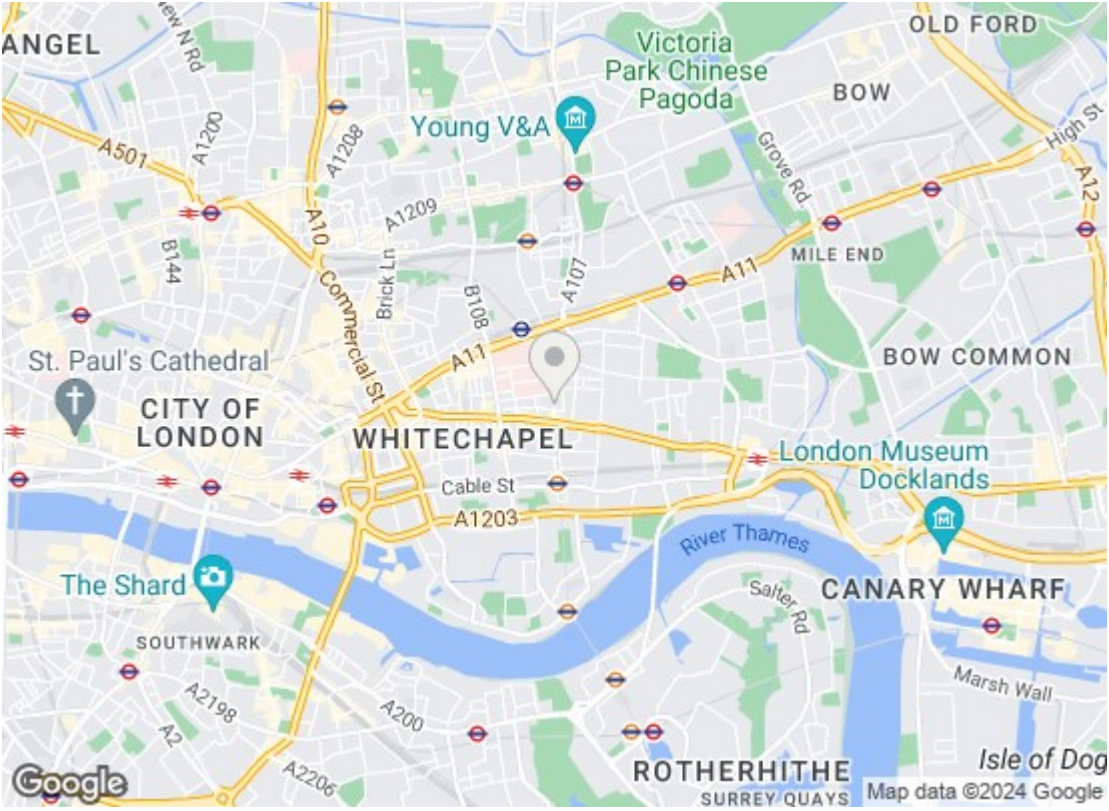
KITCHEN VIEW



BEDROOM VIEW



BATHROOM



Energy Efficiency Rating		
	Current	Potential
Very energy efficient - lower running costs		
(92 plus) <b>A</b>		
(81-91) <b>B</b>		
(69-80) <b>C</b>	72	80
(55-68) <b>D</b>		
(39-54) <b>E</b>		
(21-38) <b>F</b>		
(1-20) <b>G</b>		
Not energy efficient - higher running costs		
EU Directive 2002/91/EC		
Environmental Impact (CO <sub>2</sub> ) Rating		
	Current	Potential
Very environmentally friendly - lower CO <sub>2</sub> emissions		
(92 plus) <b>A</b>		
(81-91) <b>B</b>		
(69-80) <b>C</b>		
(55-68) <b>D</b>		
(39-54) <b>E</b>		
(21-38) <b>F</b>		
(1-20) <b>G</b>		
Not environmentally friendly - higher CO <sub>2</sub> emissions		
EU Directive 2002/91/EC		

We have prepared these property particulars as a general guide to a broad description of the property. They are not intended to constitute part of an offer or contract. We have not carried out a structural survey and the services, appliances and specific fittings have not been tested. All photographs, measurements, floorplans and distances referred to are given as a guide only and should not be relied upon for the purchase of carpets or any other fixtures or fittings. Lease details, service charges and ground rent (where applicable) and council tax are given as a guide only and should be checked and confirmed by your Solicitor prior to exchange of contracts.