



Viadux, Great Bridgewater Street, Manchester, M1 5NZ

£380 Per Week

MANCHESTER'S NEWEST AND MOST LUXURIOUS DEVELOPMENT
THE VIADUX ON GREAT BRIDGEWATER STREET M1

6TH FLOOR
BRAND NEW ONE BEDROOM APARTMENT

HOTEL STYLE AMENITIES INC: RESIDENTS POOL, GYM, SPA, LOUNGE, BAR, WORKSPACES, CINEMA & EVEN A KARAOKE ROOM!

WILL BE FURNISHED

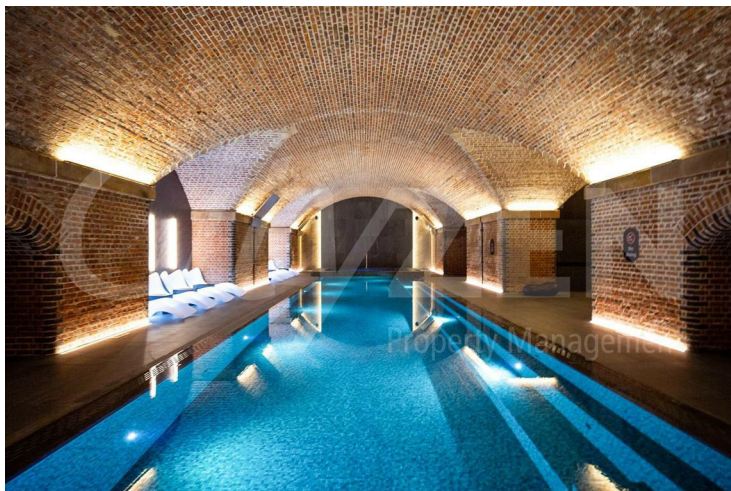
AVAILABLE FROM THE 1ST JULY

- 6TH FLOOR FURNISHED APARTMENT
- LATEST "SALBOY" LUXURY DEVELOPMENT
- AVAILABLE JULY 1ST
- RESERVE NOW
- BRAND NEW LUX ONE BED AVAILABLE TO RENT
- HOTEL STYLE FACILITIES INC POOL, GYM, CINEMA, CONCIERGE
- STUDENTS OR PROFESSIONALS WELCOME
- THE VIADUX M1
- DIRECT ACCESS TO METROLINK
- ONE OF THE MOST LUXURIOUS BUILDINGS IN MANCHESTER

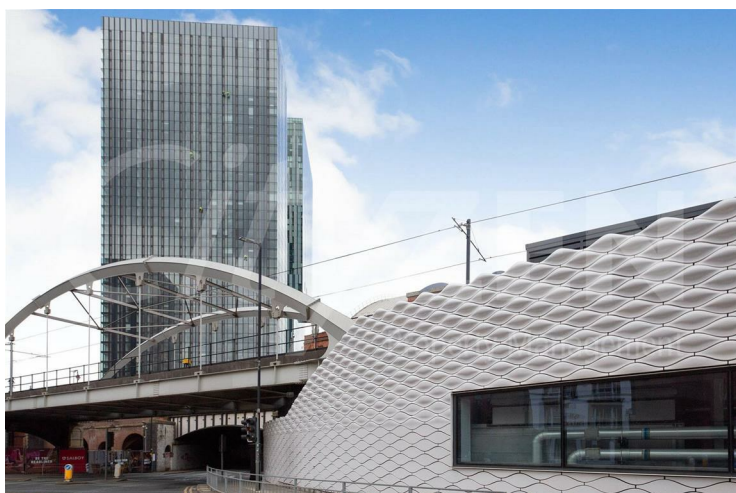
Viadux, Great Bridgewater Street, Manchester, M1 5NZ



VIADUX



RESIDENTS FACILITIES



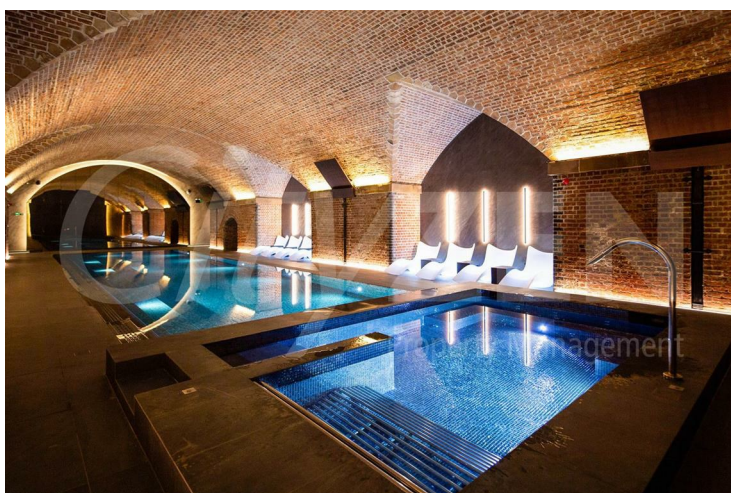
VIADUX



RESIDENTS FACILITIES



RESIDENTS FACILITIES

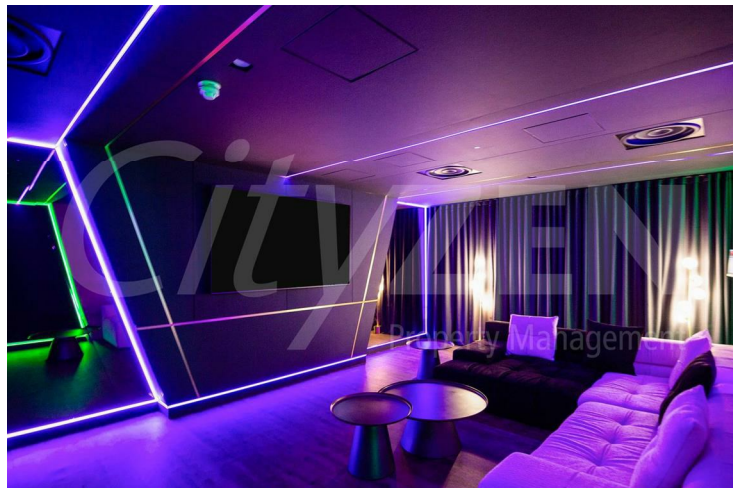


RESIDENTS FACILITIES

Viadux, Great Bridgewater Street, Manchester, M1 5NZ



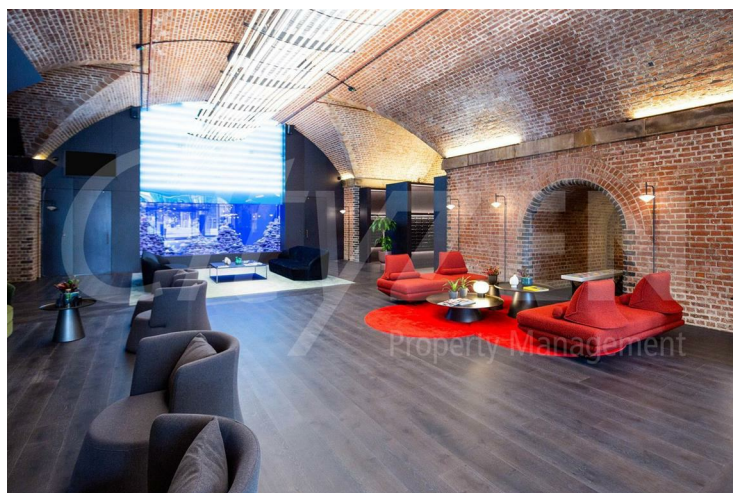
RESIDENTS FACILITIES



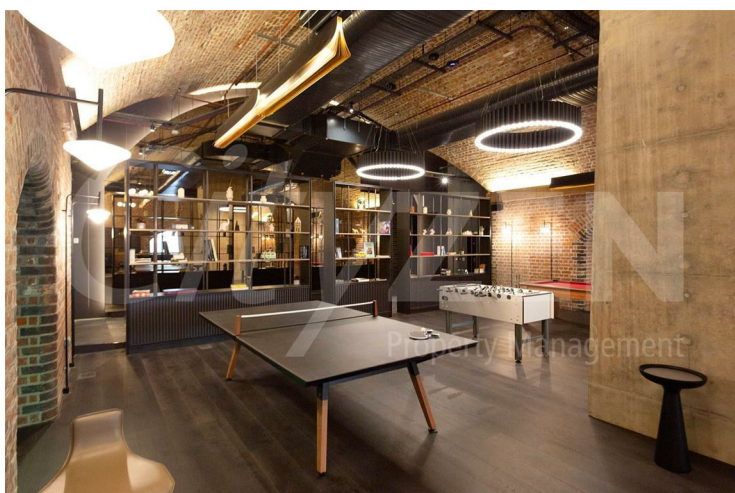
RESIDENTS FACILITIES



RESIDENTS FACILITIES



RESIDENTS FACILITIES



RESIDENTS FACILITIES



VIADUX

Viadux, Great Bridgewater Street, Manchester, M1 5NZ



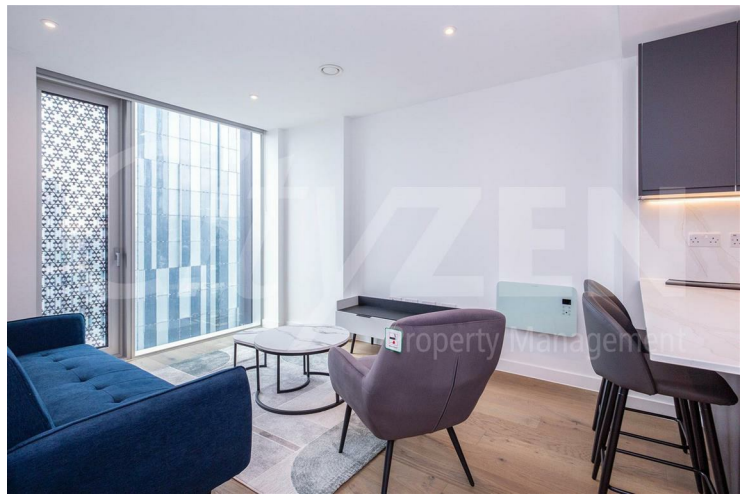
VIEW



KITCHEN/RECEPTION ROOM



KITCHEN



RECEPTION ROOM



KITCHEN

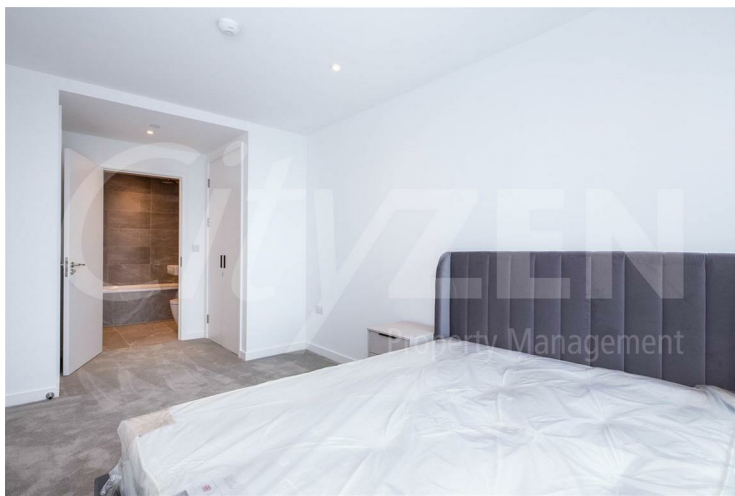


RECEPTION ROOM

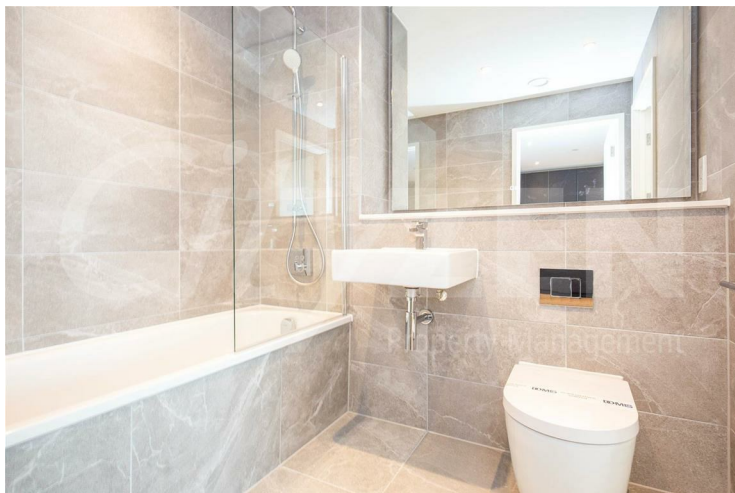
Viadux, Great Bridgewater Street, Manchester, M1 5NZ



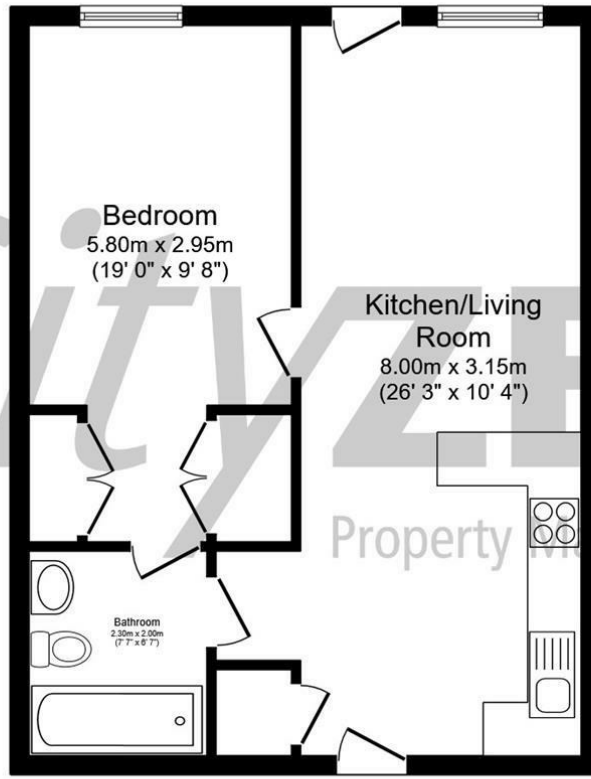
BEDROOM



BEDROOM



BATHROOM



Total floor area 50.8 m² (547 sq.ft.) approx

This floor plan is for illustrative purposes only. It is not drawn to scale. Any measurements, floor areas (including any total floor area), openings and orientation are approximate. No details are guaranteed, they cannot be relied upon for any purpose and they do not form part of any agreement. No liability is taken for any error, omission or misstatement. A party must rely upon its own inspection(s). Powered by www.focalagent.com



Energy Efficiency Rating		
	Current	Potential
Very energy efficient - lower running costs		
(92 plus) A		
(81-91) B	85	85
(69-80) C		
(55-68) D		
(39-54) E		
(21-38) F		
(1-20) G		
Not energy efficient - higher running costs		
EU Directive 2002/91/EC		
Environmental Impact (CO ₂) Rating		
	Current	Potential
Very environmentally friendly - lower CO ₂ emissions		
(92 plus) A		
(81-91) B		
(69-80) C		
(55-68) D		
(39-54) E		
(21-38) F		
(1-20) G		
Not environmentally friendly - higher CO ₂ emissions		
EU Directive 2002/91/EC		

We have prepared these property particulars as a general guide to a broad description of the property. They are not intended to constitute part of an offer or contract. We have not carried out a structural survey and the services, appliances and specific fittings have not been tested. All photographs, measurements, floorplans and distances referred to are given as a guide only and should not be relied upon for the purchase of carpets or any other fixtures or fittings. Lease details, service charges and ground rent (where applicable) and council tax are given as a guide only and should be checked and confirmed by your Solicitor prior to exchange of contracts.