



## **Paisley Court, Clyde Square, London, E14 7EQ**

**£400 Per Week**

A 1 bedroom, top floor apartment for rent within this beautiful warehouse conversion, part of the Royal Quay development.

Located on the Limehouse Cut, with views directly over the canal, within short walking distance of Canary Wharf and the DLR station.

Top specification throughout, open plan living room with luxury fitted kitchen, exposed brick work, solid wood flooring, luxury bathroom suite and fitted bedroom.

Day concierge.

Comes furnished.

PROPERTY AVAILABLE FROM 22.08.2024

- 1 bedroom apartment
- Canal side location
- Walk to Canary Wharf
- Comes furnished
- Day concierge
- Available from 22.08.2024
- Warehouse conversion
- Walk to shops & supermarket
- Walk to DLR station

# Paisley Court, Clyde Square, London, E14 7EQ



ROYAL QUAY



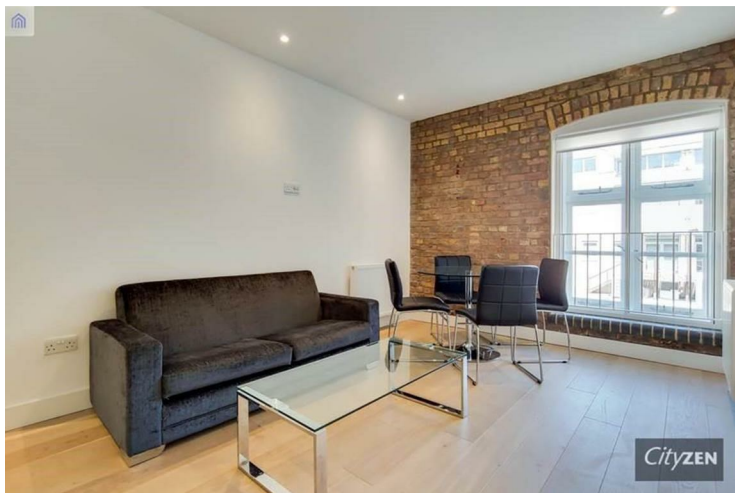
BEDROOM



ROYAL QUAY



SHOWER ROOM



RECEPTION ROOM



KITCHEN

# Paisley Court, Clyde Square, London, E14 7EQ



BEDROOM VIEW



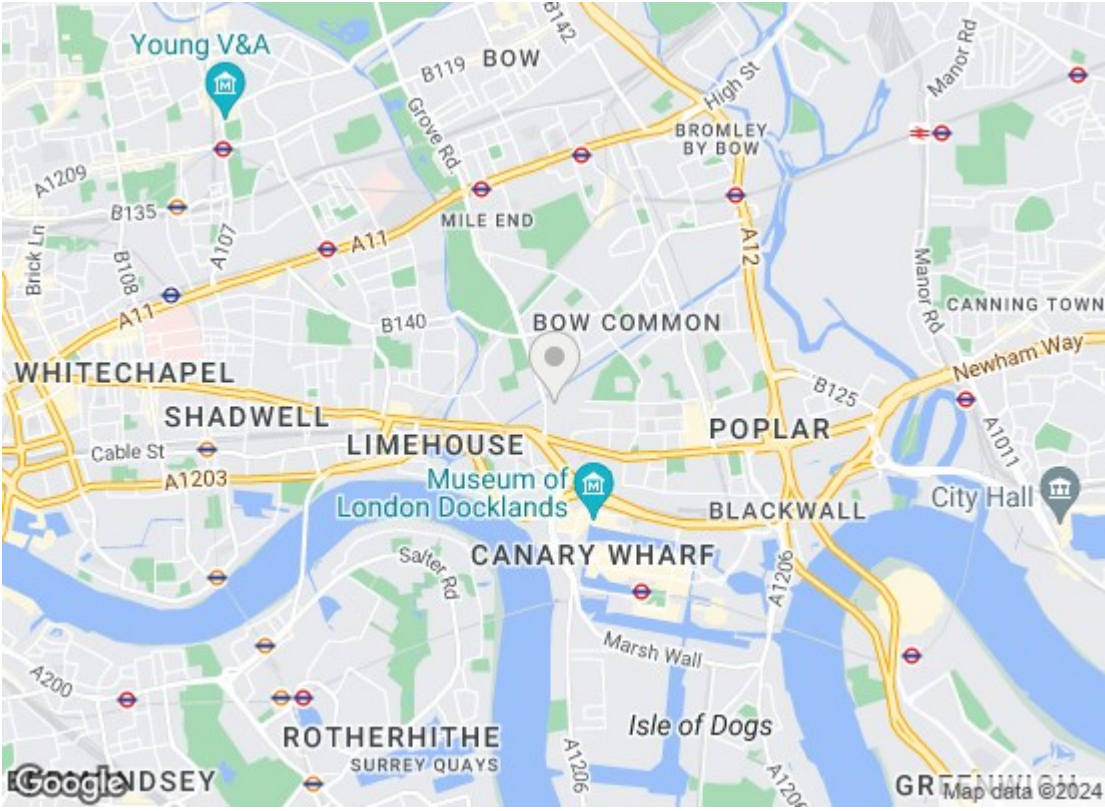
ROYAL QUAY



PAISLEY COURT



PAISLEY COURT



Energy Efficiency Rating		
	Current	Potential
<i>Very energy efficient - lower running costs</i>		
(92 plus) <b>A</b>		
(81-91) <b>B</b>		
(69-80) <b>C</b>		
(55-68) <b>D</b>		
(39-54) <b>E</b>		
(21-38) <b>F</b>		
(1-20) <b>G</b>		
<i>Not energy efficient - higher running costs</i>		
	<b>63</b>	<b>63</b>
EU Directive 2002/91/EC		
Environmental Impact (CO <sub>2</sub> ) Rating		
	Current	Potential
<i>Very environmentally friendly - lower CO<sub>2</sub> emissions</i>		
(92 plus) <b>A</b>		
(81-91) <b>B</b>		
(69-80) <b>C</b>		
(55-68) <b>D</b>		
(39-54) <b>E</b>		
(21-38) <b>F</b>		
(1-20) <b>G</b>		
<i>Not environmentally friendly - higher CO<sub>2</sub> emissions</i>		
EU Directive 2002/91/EC		

We have prepared these property particulars as a general guide to a broad description of the property. They are not intended to constitute part of an offer or contract. We have not carried out a structural survey and the services, appliances and specific fittings have not been tested. All photographs, measurements, floorplans and distances referred to are given as a guide only and should not be relied upon for the purchase of carpets or any other fixtures or fittings. Lease details, service charges and ground rent (where applicable) and council tax are given as a guide only and should be checked and confirmed by your Solicitor prior to exchange of contracts.