



## **Hawksbury Heights, 11 Hewson Way, London, SE17 1JX**

**£780 Per Week**

AVAILABLE NOW

BRAND NEW TWO BEDROOM TWO BATHROOM APARTMENT WITH EAST FACING BALCONY IN HAWKSURRY HEIGHTS ELEPHANT PARK SE17

ZONE 1 LOCATION

RESIDENTS GYM, 24 HOUR CONCIERGE, ELEVATED GARDENS, SKY LOUNGE & ON SITE RESTAURANTS

AVAILABLE NOW

FURNISHED TO A HIGH STANDARD

CALL NOW FOR A VIEWING

- AVAILABLE NOW
- ZONE 1 LOCATION
- EAST FACING BALCONY
- OVERGROUND, NORTHERN & BAKERLOO LINES
- TWO BEDROOM 2 BATHROOM APARTMENT
- 24 HR CONCIERGE, GYM, ELEVATED GDNS, SKY LOUNGE
- FURNISHED TO A HIGH STANDARD
- PARK & SAYER DEVELOPMENT ELEPHANT PARK
- ON SITE RESTAURANTS
- CALL NOW FOR A VIEWING

# Hawksbury Heights, 11 Hewson Way, London, SE17 1JX



PARK & SAYER



PARK & SAYER (CGI)



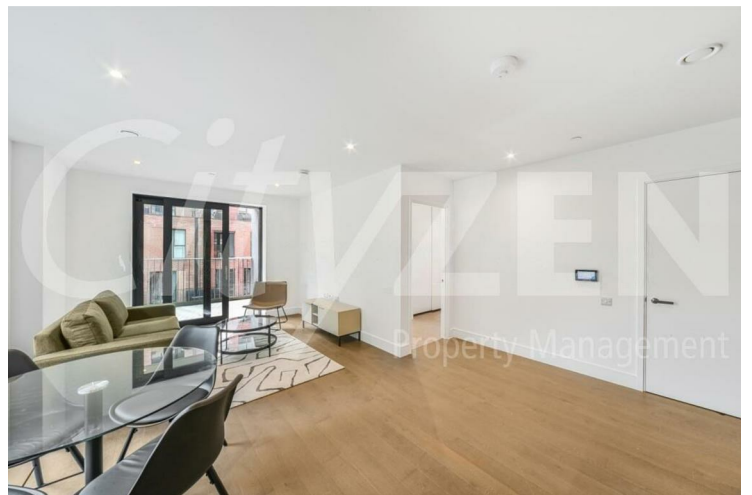
PARK & SAYER (CGI)



PARK & SAYER



PARK & SAYER (CGI)



RECEPTION

**Hawksbury Heights, 11 Hewson Way, London, SE17 1JX**



**KITCHEN**



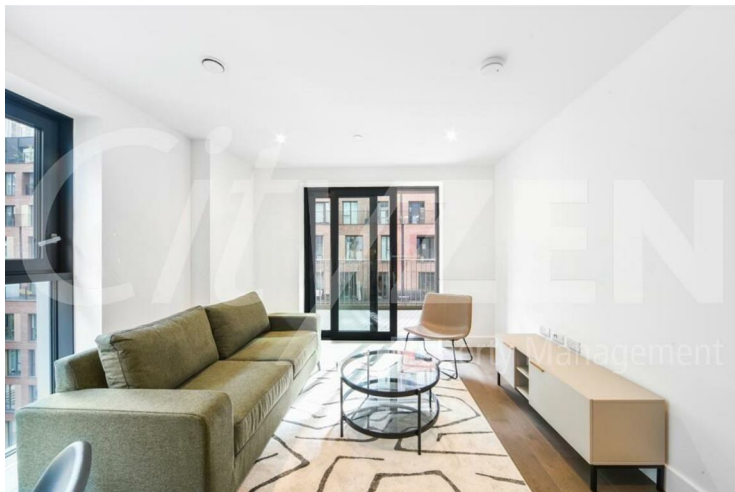
**BEDROOM/DRESSING ROOM**



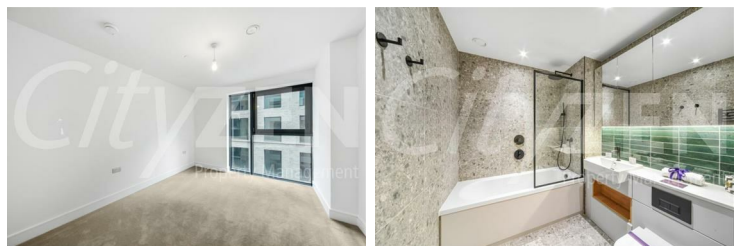
**BEDROOM**



**EN-SUITE**



**RECEPTION**



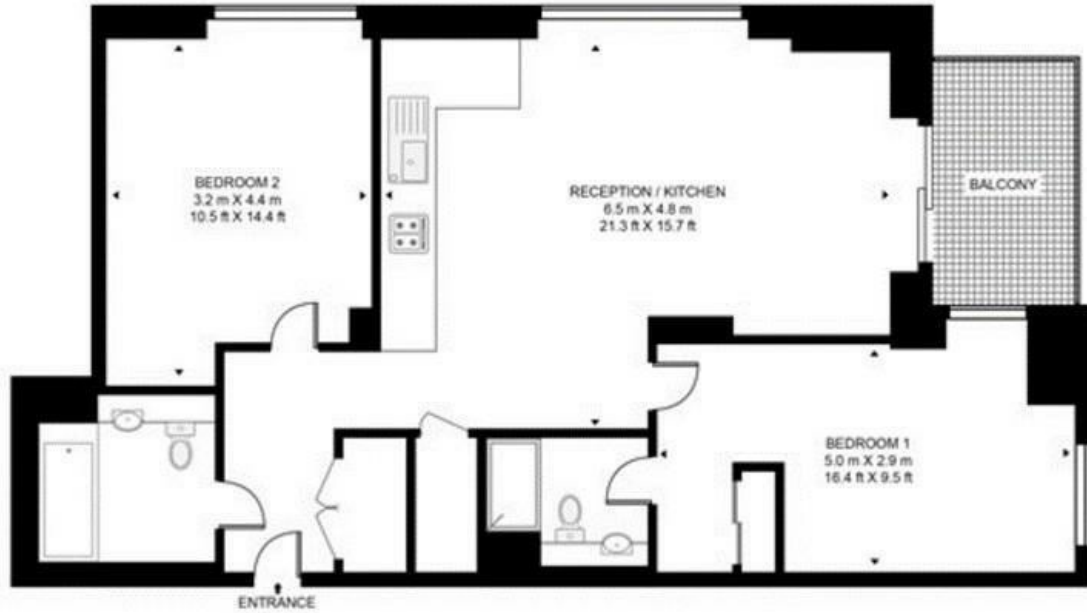
**BEDROOM  
BATHROOM**

# Hawksbury Heights, 11 Hewson Way, London, SE17 1JX

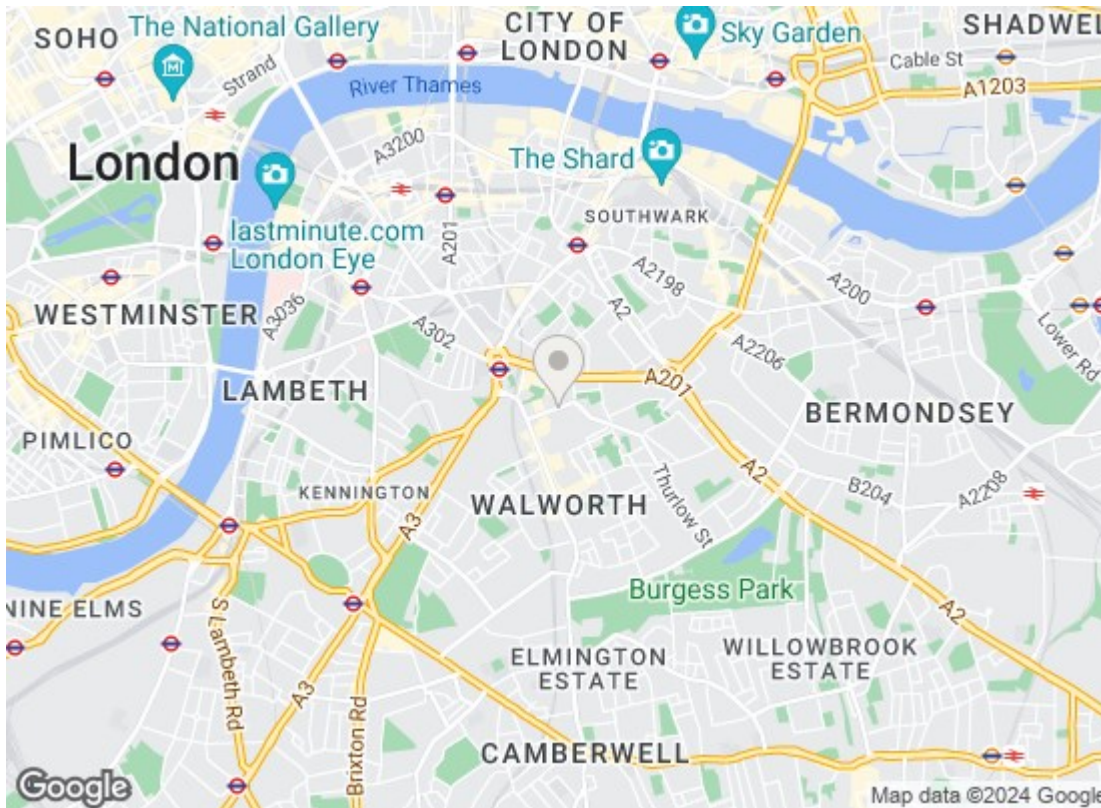


PARK & SAYER

**HAWKSBUURY HEIGHTS, PARK AND SAYER, SE17**  
APPROXIMATE GROSS INTERNAL FLOOR AREA 816 Q.FT (75.8 SQ.M)



Whilst every attempt has been made to ensure the accuracy of the floor plan contained here, measurements of door, windows, rooms and any other items are approximate and no responsibility is taken for any error, omission, or mis-statement. The plan for illustrative purposes only and should be used as such by any prospective purchaser. The services, system and appliances shown have not been tested and no guarantee as to their operability or efficiency can be given.



Energy Efficiency Rating		
	Current	Potential
Very energy efficient - lower running costs		
(92 plus) <b>A</b>		
(81-91) <b>B</b>	<b>86</b>	<b>86</b>
(69-80) <b>C</b>		
(55-68) <b>D</b>		
(39-54) <b>E</b>		
(21-38) <b>F</b>		
(1-20) <b>G</b>		
Not energy efficient - higher running costs		
EU Directive 2002/91/EC		
Environmental Impact (CO <sub>2</sub> ) Rating		
	Current	Potential
Very environmentally friendly - lower CO <sub>2</sub> emissions		
(92 plus) <b>A</b>		
(81-91) <b>B</b>		
(69-80) <b>C</b>		
(55-68) <b>D</b>		
(39-54) <b>E</b>		
(21-38) <b>F</b>		
(1-20) <b>G</b>		
Not environmentally friendly - higher CO <sub>2</sub> emissions		
EU Directive 2002/91/EC		

We have prepared these property particulars as a general guide to a broad description of the property. They are not intended to constitute part of an offer or contract. We have not carried out a structural survey and the services, appliances and specific fittings have not been tested. All photographs, measurements, floorplans and distances referred to are given as a guide only and should not be relied upon for the purchase of carpets or any other fixtures or fittings. Lease details, service charges and ground rent (where applicable) and council tax are given as a guide only and should be checked and confirmed by your Solicitor prior to exchange of contracts.