



Parkside Apartments, Cascade Way, London, W12 7RD

£830 Per Week

A 2 BEDROOM 2 BATHROOM APARTMENT FOR RENT LOCATED WITHIN THE 'WHITE CITY LIVING' DEVELOPMENT NEXT TO WESTFIELD SHOPPING CITY.

The accommodation is set over 821 square feet and comprises a spacious and bright reception room with a stunning kitchen & feature breakfast bar & access to a large balcony.

The master bedroom has a dressing area, En-suite and access to the balcony. There is a further double bedroom and generous storage space off the hallway. The apartment further benefits from underfloor heating and air cooling.

White City Living is located next to Westfield Shopping Centre and offers access to the Central, Hammersmith & City and Circle lines.

Residents of the development benefit from a 20 meter swimming pool, club lounge and 24 hour concierge

COMES UN-FURNISHED

AVAILABLE NOW

- 2 BEDROOM 2 BATHROOM APARTMENT
- PARKSIDE APARTMENTS
- NXT TO WESTFIELD SHOPPING CITY
- 8TH FLOOR
- PART OF WHITE CITY LIVING
- LARGE TERRACE
- AVAILABLE FROM 14.08.2024
- UNFURNISHED
- RESIDENTS SPA

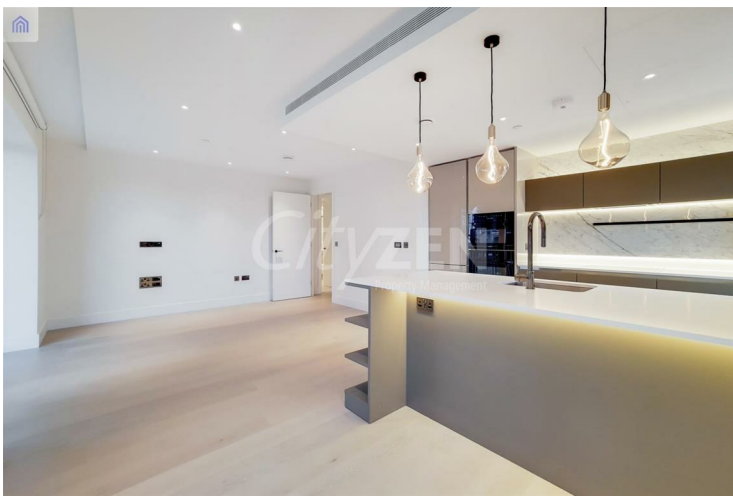
Parkside Apartments, Cascade Way, London, W12 7RD



RECEPTION ROOM



KITCHEN



KITCHEN



BEDROOM



PARKSIDE APARTMENTS



BEDROOM

Parkside Apartments, Cascade Way, London, W12 7RD



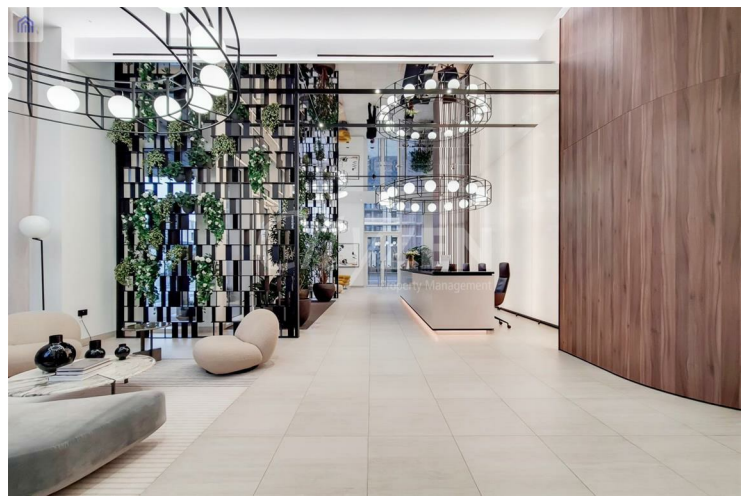
BEDROOM



BALCONY



EN-SUITE



LOBBY



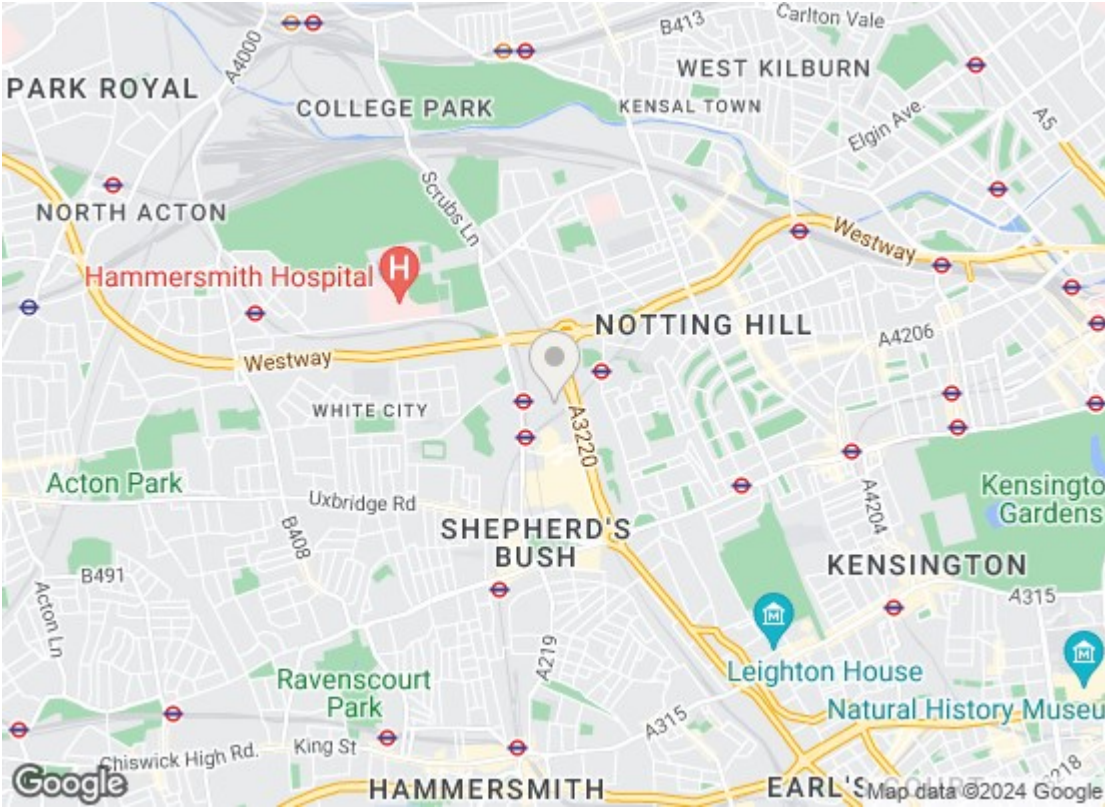
BATHROOM



- Eighth Floor

76.28 sqm / 821.07 sqft
 72.80 sqm / 781.46 sqft
 73.01 sqm / 783.84 sqft
 0.00 sqm / 0.00 sqft

SPEC ID: 56400856/db445b03b9bffc3



Energy Efficiency Rating		
	Current	Potential
Very energy efficient - lower running costs		
(92 plus) A	87	87
(81-91) B		
(69-80) C		
(55-68) D		
(39-54) E		
(21-38) F		
(1-20) G		
Not energy efficient - higher running costs		
England & Wales		EU Directive 2002/91/EC
Environmental Impact (CO ₂) Rating		
	Current	Potential
Very environmentally friendly - lower CO ₂ emissions		
(92 plus) A		
(81-91) B		
(69-80) C		
(55-68) D		
(39-54) E		
(21-38) F		
(1-20) G		
Not environmentally friendly - higher CO ₂ emissions		
England & Wales		EU Directive 2002/91/EC

We have prepared these property particulars as a general guide to a broad description of the property. They are not intended to constitute part of an offer or contract. We have not carried out a structural survey and the services, appliances and specific fittings have not been tested. All photographs, measurements, floorplans and distances referred to are given as a guide only and should not be relied upon for the purchase of carpets or any other fixtures or fittings. Lease details, service charges and ground rent (where applicable) and council tax are given as a guide only and should be checked and confirmed by your Solicitor prior to exchange of contracts.