

Clement apartments, 4 Brigadier Walk, Woolwich, SE18 6ZP

£450 Per Week

COMING SOON

A brand new 1 bed apartment located in "Galley Wharf" Berkeley Homes latest phase of "Royal Arsenal" which sits on the banks of the River Thames and offers stunning views of the River.

Royal Arsenal residents get exclusive access to The Waterside Club which houses a state of the art gym, spa pool, 20 meter swimming pool, cinema room and the 24 hour concierge

Also located on the development are 3 supermarkets, health and dental care as well as shops and restaurants. Transport is excellent with the on site Elizabeth Line station and of course the River boat service.

FURNISHED
AVAILABLE 31st MAY

- JUST COMPLETED
- DIRECT RIVER VIEWS
- AVAILABLE LATE MAY
- ON THE BANKS OF THE THAMES
- GALLEY WHARF THE LATEST RIVERSIDE APARTMENTS IN ROYAL ARSENAL
- FANTASTIC ON SITE FACILITIES
- WILL BE FURNISHED TO A HIGH STANDARD
- ONE BEDROOM APARTMENT
- 1 KM OF RIVERSIDE WALKS, SPA & GYM
- ON SITE ELIZABETH LINE STATION

Clement apartments, 4 Brigadier Walk, Woolwich, SE18 6ZP



GALLEY WHARF



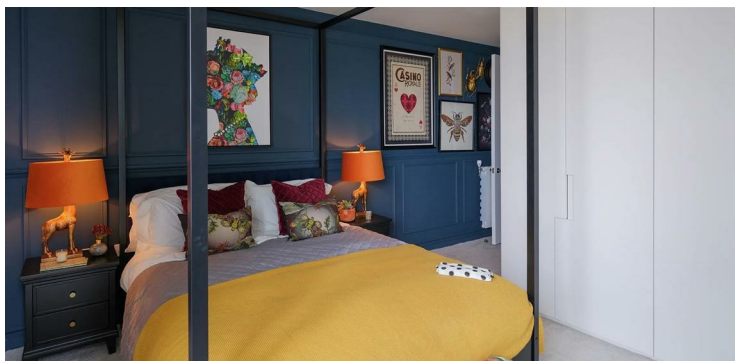
SHOW FLAT



SHOW FLAT



GALLEY WHARF



SHOW FLAT



SHOW FLAT

Clement apartments, 4 Brigadier Walk, Woolwich, SE18 6ZP



GALLEY WHARF



SHOW FLAT



POOL AT THE WATERSIDE CLUB





SHOW FLAT



SHOW FLAT



Energy Efficiency Rating		
	Current	Potential
<i>Very energy efficient - lower running costs</i>		
(92 plus) A		
(81-91) B		
(69-80) C		
(55-68) D		
(39-54) E		
(21-38) F		
(1-20) G		
<i>Not energy efficient - higher running costs</i>		
England & Wales		EU Directive 2002/91/EC 
Environmental Impact (CO ₂) Rating		
	Current	Potential
<i>Very environmentally friendly - lower CO₂ emissions</i>		
(92 plus) A		
(81-91) B		
(69-80) C		
(55-68) D		
(39-54) E		
(21-38) F		
(1-20) G		
<i>Not environmentally friendly - higher CO₂ emissions</i>		
England & Wales		EU Directive 2002/91/EC 

We have prepared these property particulars as a general guide to a broad description of the property. They are not intended to constitute part of an offer or contract. We have not carried out a structural survey and the services, appliances and specific fittings have not been tested. All photographs, measurements, floorplans and distances referred to are given as a guide only and should not be relied upon for the purchase of carpets or any other fixtures or fittings. Lease details, service charges and ground rent (where applicable) and council tax are given as a guide only and should be checked and confirmed by your Solicitor prior to exchange of contracts.