



The Cube Building, Wenlock Road, London, N1 7GT

£620 Per Week

2 double bedroom 2 bathroom apartment for rent on the second floor of this very sought after development 'THE CUBE APARTMENTS' N1, located just off City Road and situated between the Regents Canal and Shepherdess Walk.

Open plan living room with luxury fitted kitchen, access to spacious terrace, 2 double bedrooms, 2 luxury bathroom suites and solid wood heated flooring.

Old Street tube station, cafes, host of local shops and main supermarkets are a short walk away.

Day concierge.

Comes part furnished (NO BED IN MASTER BEDROOM)

PROPERTY AVAILABLE FROM 11.07.2024

- 2 Double bedrooms
- Very high specification
- Day concierge
- Spacious terrace
- 2nd floor apartment
- Available from 11.07.2024
- Canal side development
- Part furnished
- Host of cafes & shops nearby
- Walk to Old Street tube station

The Cube Building, Wenlock Road, London, N1 7GT

BEDROOM

BEDROOM

BATHROOM

KITCHEN

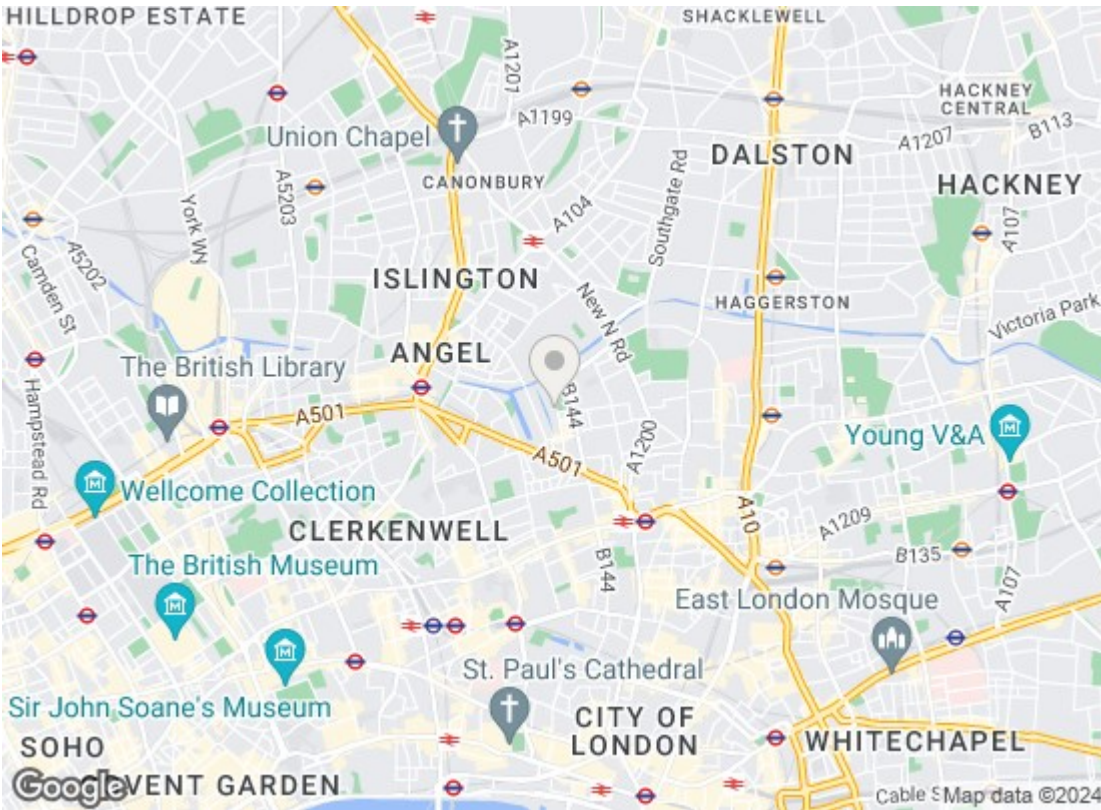
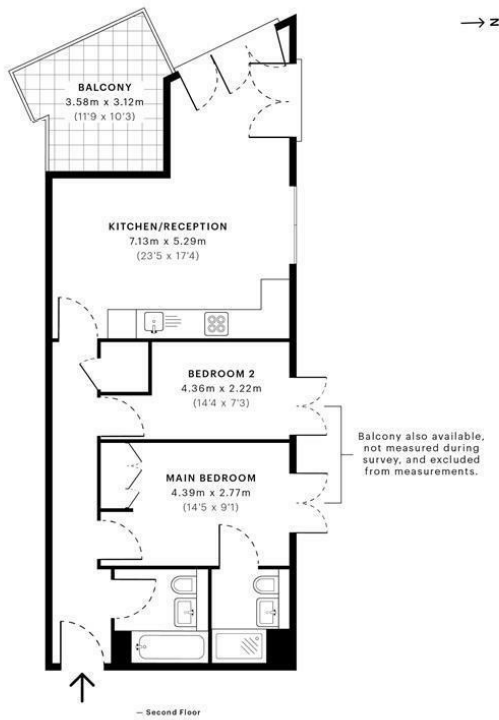
EN SUITE SHOWER ROOM

BEDROOM

RECEPTION ROOM

RECEPTION ROOM

RECEPTION ROOM



Energy Efficiency Rating

	Current	Potential
Very energy efficient - lower running costs		
(92 plus) A		
(81-91) B	85	85
(69-80) C		
(55-68) D		
(39-54) E		
(21-38) F		
(1-20) G		
Not energy efficient - higher running costs		

England & Wales EU Directive 2002/91/EC

Environmental Impact (CO₂) Rating

	Current	Potential
Very environmentally friendly - lower CO ₂ emissions		
(92 plus) A		
(81-91) B	90	90
(69-80) C		
(55-68) D		
(39-54) E		
(21-38) F		
(1-20) G		
Not environmentally friendly - higher CO ₂ emissions		

England & Wales EU Directive 2002/91/EC

We have prepared these property particulars as a general guide to a broad description of the property. They are not intended to constitute part of an offer or contract. We have not carried out a structural survey and the services, appliances and specific fittings have not been tested. All photographs, measurements, floorplans and distances referred to are given as a guide only and should not be relied upon for the purchase of carpets or any other fixtures or fittings. Lease details, service charges and ground rent (where applicable) and council tax are given as a guide only and should be checked and confirmed by your Solicitor prior to exchange of contracts.