



Viadux, Great Bridgewater Street, Manchester, M1 5NZ

£530 Per Week

THE VIADUX MANCHESTER M1

COMPLETING IN MAY 24

SELECTION OF TWO BEDROOM TWO BATHROOM APARTMENTS TO RENT FROM £2,300 PER MONTH

AVAILABILITY ON VARIOUS FLOORS

HOTEL STYLE AMENITIES INC: RESIDENTS POOL, GYM, SPA, LOUNGE, BAR, WORKSPACES, CINEMA & EVEN A KARAOKE ROOM!

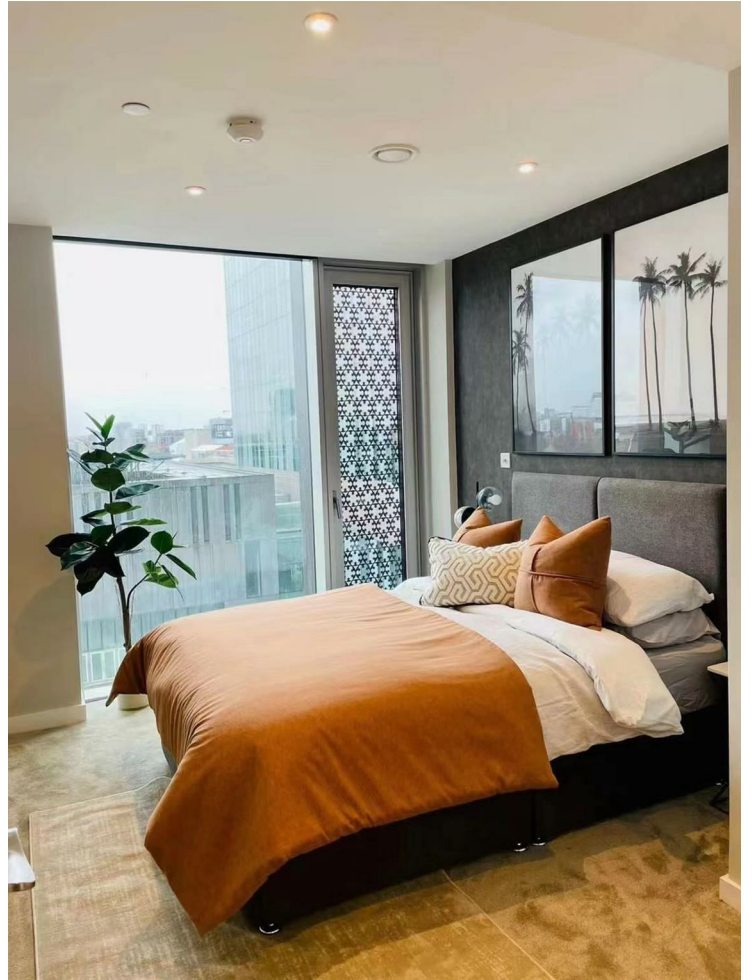
REGISTER NOW FOR A PRIORITY VIEWING

- COMPLETING IN MAY 24
- LATEST "SALBOY" LUXURY DEVELOPMENT
- PRICES FROM £2,300 PER MONTH
- VIEWS ACROSS CITY CENTRE SKYLINE
- BRAND NEW LUX TWO BED TWO BATHS AVAILABLE TO RENT
- HOTEL STYLE FACILITIES INC POOL, GYM, CINEMA, CONCIERGE
- ALL APARTMENTS FURNISHED
- THE VIADUX M1
- DIRECT ACCESS TO METROLINK
- APARTMENTS AVAIL ON VARIOUS FLOORS

Viadux, Great Bridgewater Street, Manchester, M1 5NZ



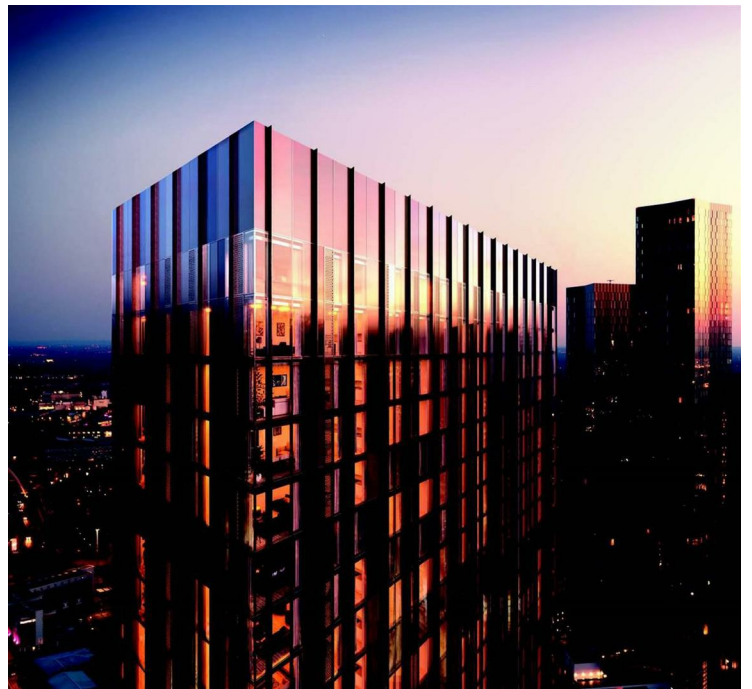
VIADUX (CGI)



VIADUX (CGI)

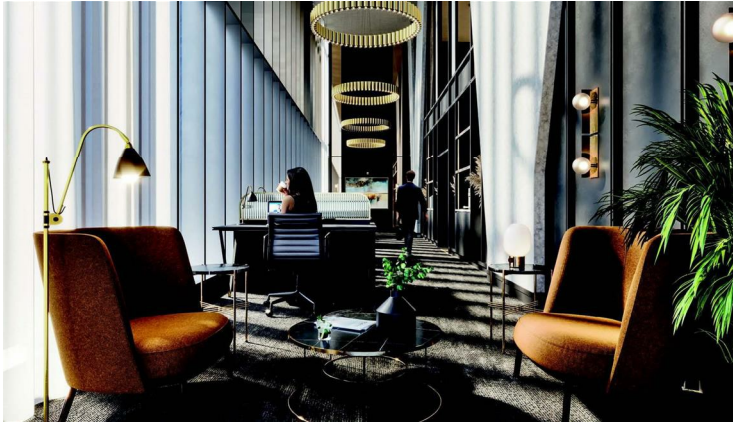


VIADUX (CGI)



VIADUX (CGI)

Viadux, Great Bridgewater Street, Manchester, M1 5NZ



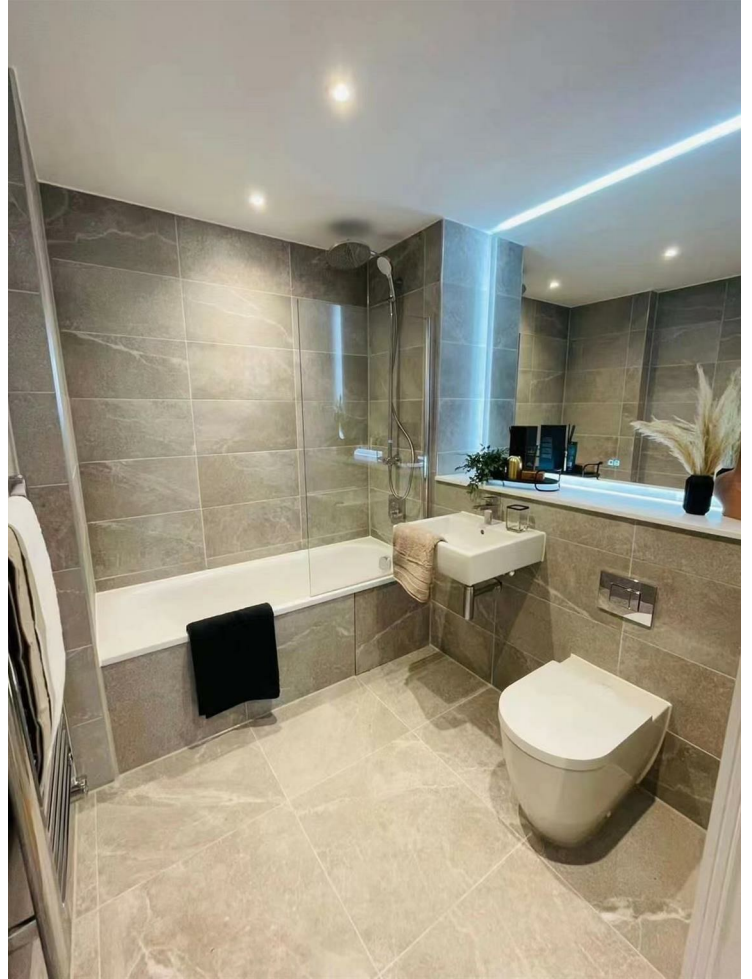
VIADUX (CGI)



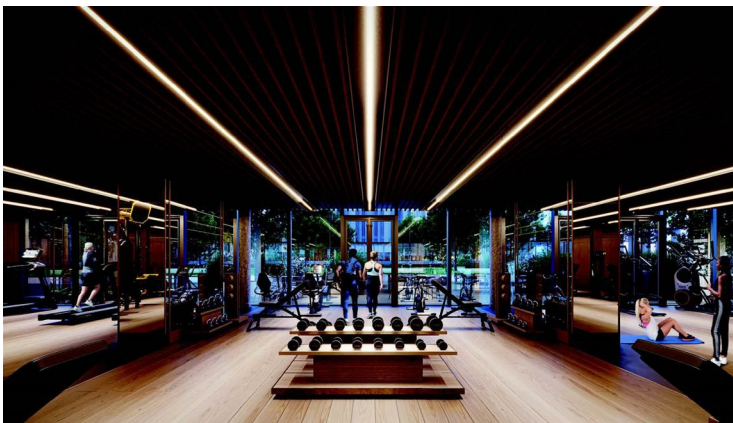
VIADUX (CGI)



VIADUX (CGI)



VIADUX (CGI)



VIADUX (CGI)

Viadux, Great Bridgewater Street, Manchester, M1 5NZ



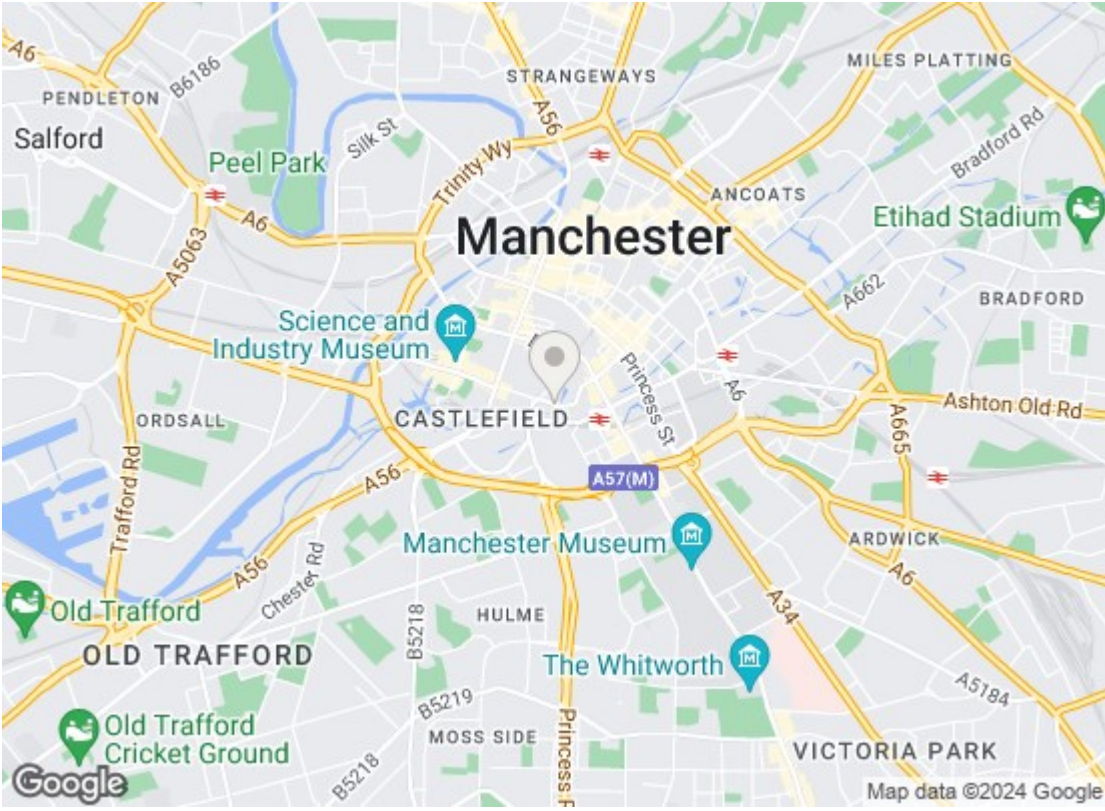
VIADUX (CGI)





VIADUX (CGI)



VIADUX (CGI)



Energy Efficiency Rating		
	Current	Potential
Very energy efficient - lower running costs		
(92 plus) A		
(81-91) B		
(69-80) C		
(55-68) D		
(39-54) E		
(21-38) F		
(1-20) G		
Not energy efficient - higher running costs		
England & Wales		EU Directive 2002/91/EC 
Environmental Impact (CO ₂) Rating		
	Current	Potential
Very environmentally friendly - lower CO ₂ emissions		
(92 plus) A		
(81-91) B		
(69-80) C		
(55-68) D		
(39-54) E		
(21-38) F		
(1-20) G		
Not environmentally friendly - higher CO ₂ emissions		
England & Wales		EU Directive 2002/91/EC 

We have prepared these property particulars as a general guide to a broad description of the property. They are not intended to constitute part of an offer or contract. We have not carried out a structural survey and the services, appliances and specific fittings have not been tested. All photographs, measurements, floorplans and distances referred to are given as a guide only and should not be relied upon for the purchase of carpets or any other fixtures or fittings. Lease details, service charges and ground rent (where applicable) and council tax are given as a guide only and should be checked and confirmed by your Solicitor prior to exchange of contracts.