



Clapham Place, 340A Clapham Road, London, SW9 9FA

£650 Per Week

A 3RD FLOOR TWO DOUBLE BEDROOM TWO BATHROOM APARTMENT FOR RENT IN 'CLAPHAM PLACE' LOCATED ON CLAPHAM ROAD SW9.

Clapham Place is a small boutique development of just 62 apartments located on Clapham Road, 5 minutes walk to Stockwell Station (Victoria/Northern line) 8 minute walk to Clapham North Station & a 10 minute walk to Clapham High Street (Overground)

This apartment is set over 750 square feet and the accommodation comprises a light and spacious reception room with access to a balcony, fully fitted kitchen, a double bedroom with floor to ceiling windows, ample built in storage and a very nicely finished En- suite shower room. The second bedroom has floor to ceiling windows and use of the spacious luxury bathroom suite.

Further benefits for residents of Clapham Place include own concierge and gym

COMES FURNISHED.

PROPERTY AVAILABLE FROM 31.05.2024

- CLAPHAM PLACE SW9
- PRIVATE EAST FACING BALCONY
- 8 MIN WALK TO CLAPHAM NRTH STN
- 2 BATHROOMS
- 2 DOUBLE BEDROOMS
- CONCIERGE & GYM
- 10 MIN WALK TO CLAPHAM HIGH ST
- 750 SQUARE FOOT
- 5 MIN WALK TO STOCKWELL STN
- WELL FURNISHED

Clapham Place, 340A Clapham Road, London, SW9 9FA



CLAPHAM PLACE



KITCHEN/DINING AREA



BUILDING ENTRANCE



RECEPTION ROOM



KITCHEN



RECEPTION ROOM

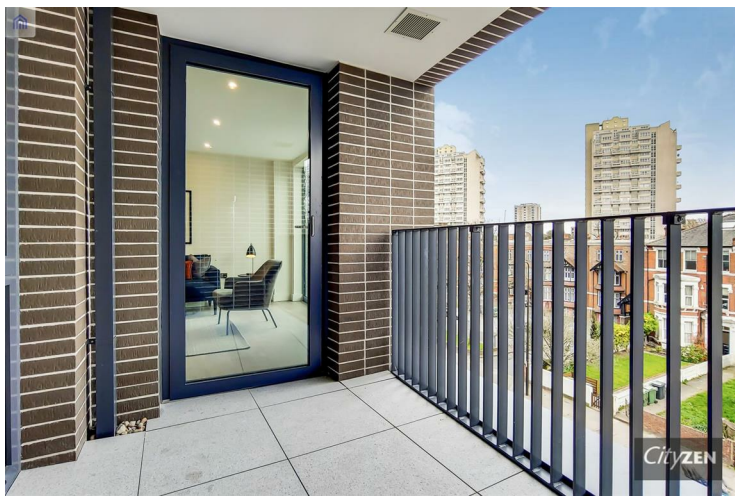
Clapham Place, 340A Clapham Road, London, SW9 9FA



RECEPTION ROOM



BEDROOM



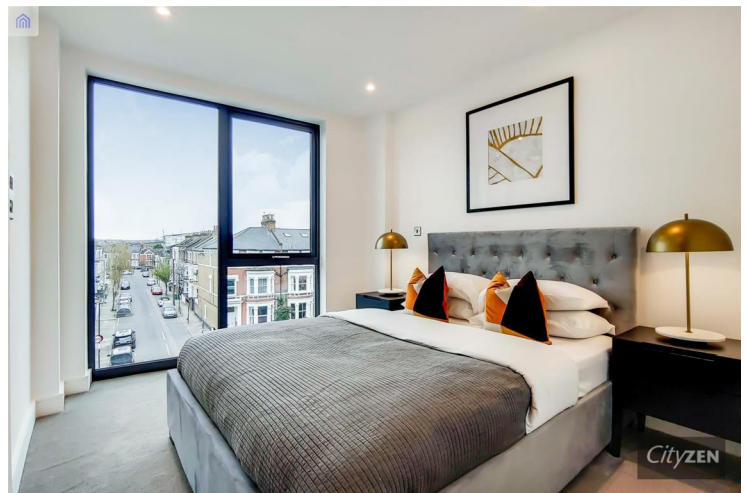
BALCONY



BEDROOM



VIEW FROM BALCONY

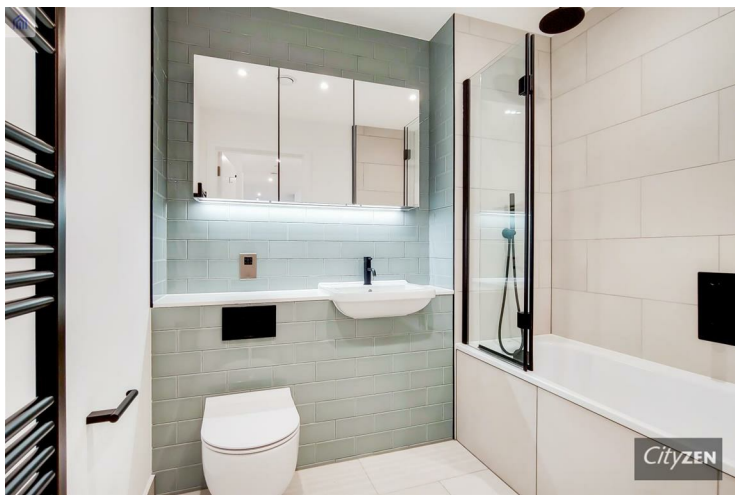


BEDROOM

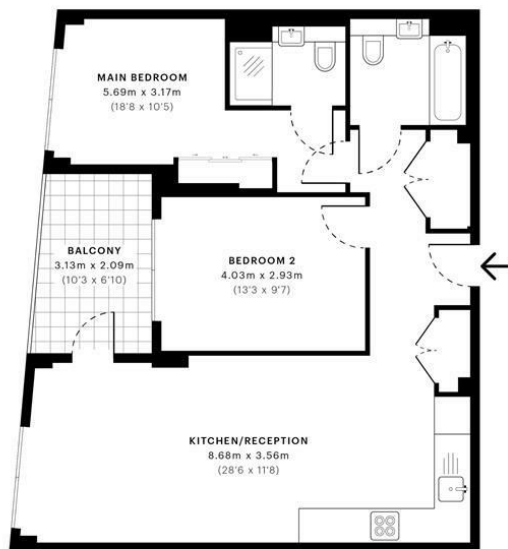
Clapham Place, 340A Clapham Road, London, SW9 9FA



EN-SUITE SHOWER ROOM



BATHROOM



— Third Floor

GROSS INTERNAL AREA (GIA)
The footprint of the property
73.20 sqm / 787.92 sqft

NET INTERNAL AREA (NIA)
Excludes walls and external features
Includes mezzanines, restricted head height
69.70 sqm / 750.24 sqft

EXTERNAL STRUCTURAL FEATURES
Balconies, terraces, verandas, etc.
5.86 sqm / 63.08 sqft

RESTRICTED HEAD HEIGHT
Limited use area under 1.5m
0.00 sqm / 0.00 sqft



Spec Verified floor plans are produced in accordance with Royal Institution of Chartered Surveyors' Property Measurement Standards. Plots and gardens are illustrative only and excluded from all area calculations. Due to rounding, numbers may not add up precisely. All measurements shown for the individual room lengths and widths are the maximum points of measurements captured in the scan.

SPRS 38 RESIDENTIAL: 79.06 sqm / 850.99 sqft
SPRS 38 RESIDENTIAL: 70.13 sqm / 753.48 sqft
SPRS ID: 604b9628978ac90d996ddac09

Energy Efficiency Rating

	Current	Potential
Very energy efficient - lower running costs		
(92 plus) A		
(81-91) B	85	85
(69-80) C		
(55-68) D		
(39-54) E		
(21-38) F		
(1-20) G		
Not energy efficient - higher running costs		

England & Wales

EU Directive
2002/91/ECEnvironmental Impact (CO₂) Rating

	Current	Potential
Very environmentally friendly - lower CO ₂ emissions		
(92 plus) A		
(81-91) B		
(69-80) C		
(55-68) D		
(39-54) E		
(21-38) F		
(1-20) G		
Not environmentally friendly - higher CO ₂ emissions		

England & Wales

EU Directive
2002/91/EC

We have prepared these property particulars as a general guide to a broad description of the property. They are not intended to constitute part of an offer or contract. We have not carried out a structural survey and the services, appliances and specific fittings have not been tested. All photographs, measurements, floorplans and distances referred to are given as a guide only and should not be relied upon for the purchase of carpets or any other fixtures or fittings. Lease details, service charges and ground rent (where applicable) and council tax are given as a guide only and should be checked and confirmed by your Solicitor prior to exchange of contracts.