



## **The Haydon, 16 Minories, London, EC3N 1AX**

**£1,325 Per Week**

6TH FLOOR 2 BED 2 BATH 910 SQUARE FOOT APARTMENT WITHIN LUXURY CITY DEVELOPMENT IN THE HEART OF ALDGATE EC3N

Our 2 bed apartment is located on the 6th floor and comprises spacious accommodation across 910 square feet and has been furnished/interior designed by the landlord to a very high standard

The apartment further benefits from a South facing balcony, dressing area off the master bedroom and a 28 foot living room.

The finishes are of the highest quality including oak floors, natural stone and marble kitchens and bathrooms with the finest appliances. .

The Haydon is located moments from Aldgate Station, Tower Hill and all the shops, restaurants and bars the City of London has to offer. Residents benefit from a spa pool, gym, yoga studio, cinema and a 24/7 concierge located within the impressive double height residents lobby.

FURNISHED/INTERIOR DESIGNED TO A VERY HIGH STANDARD  
AVAILABLE APRIL

- THE HAYDON A BOUTIQUE CITY DEVELOPMENT
- SPA POOL, GYM, ROOF GARDEN, CINEMA & 24-HOUR CONCIERGE
- NATURAL STONE & MARBLE FINISHES WITH OAK FLOORING
- SOUTH FACING TERRACE
- MOMENTS FROM ALDGATE STATION IN EC3N
- FURNISHED/INTERIOR DESIGNED TO A VERY HIGH STANDARD
- VERY HIGH SPEC KITCHEN AND BATHROOMS
- TWO BED & TWO BATH SOUTH FACING APARTMENT
- COMFORT COOLING & UNDERFLOOR HEATING
- 910 SQUARE FEET OF SPACE WITH AMPLE STORAGE

# The Haydon, 16 Minories, London, EC3N 1AX



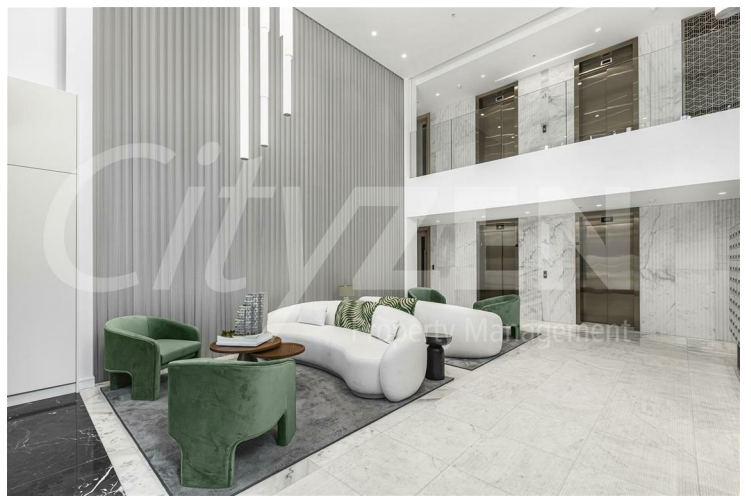
THE HAYDON



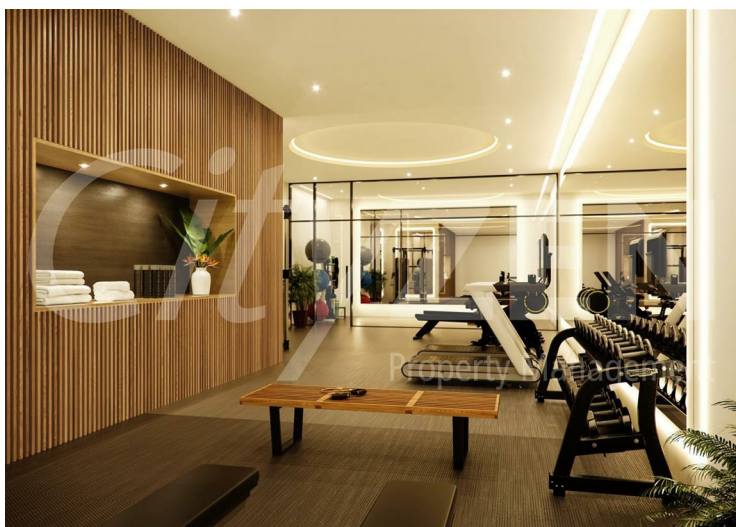
RESIDENTS ROOF GARDEN



RESIDENTS POOL (CGI)



LOBBY

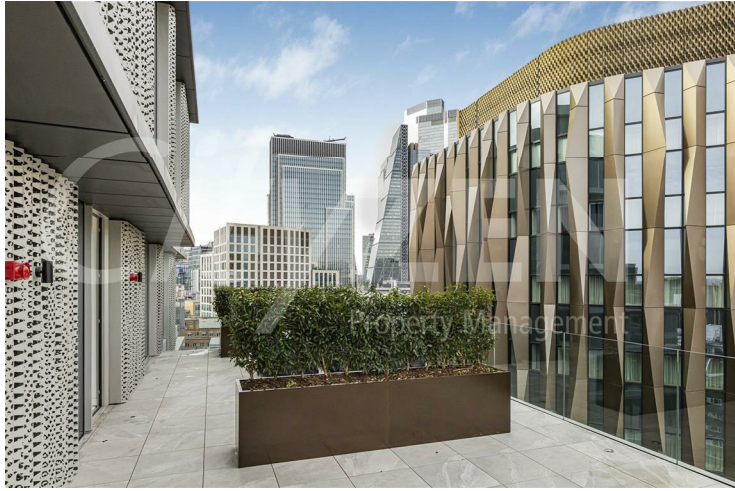


RESIDENTS GYM (CGI)



RESIDENTS CINEMA

# The Haydon, 16 Minories, London, EC3N 1AX



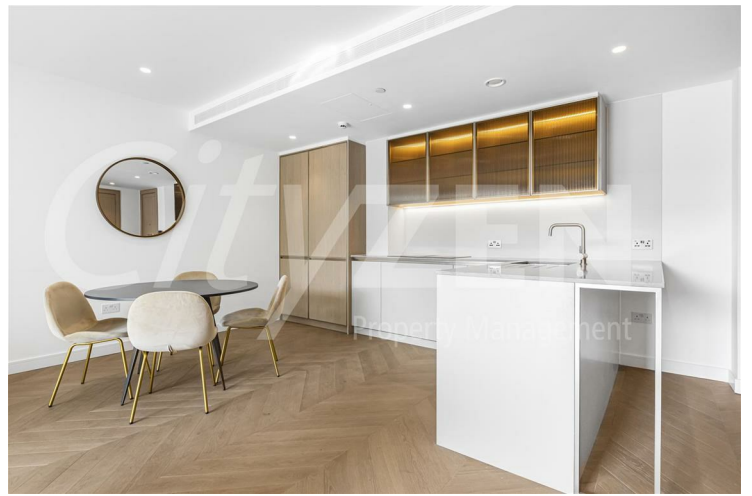
RESIDENTS ROOF GARDEN



TERRACE



VIEW FROM RESIDENTS ROOF GARDEN



KITCHEN



RECEPTION ROOM



RECEPTION ROOM

# The Haydon, 16 Minories, London, EC3N 1AX



RECEPTION ROOM



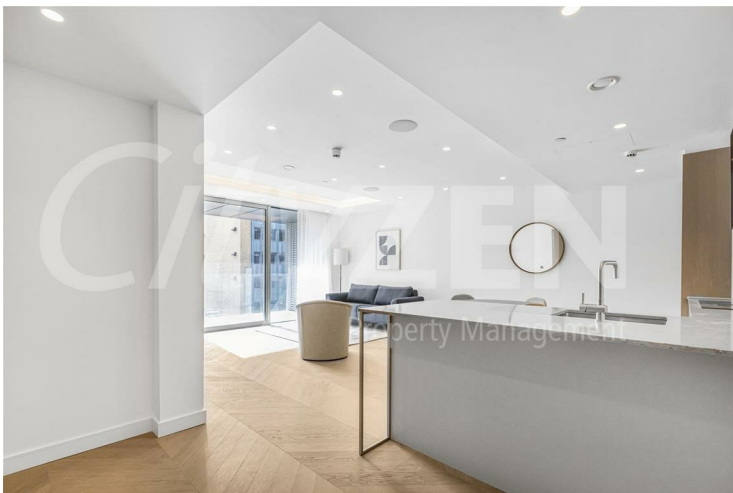
BEDROOM



KITCHEN



BEDROOM



RECEPTION ROOM



BEDROOM

**The Haydon, 16 Minories, London, EC3N 1AX**



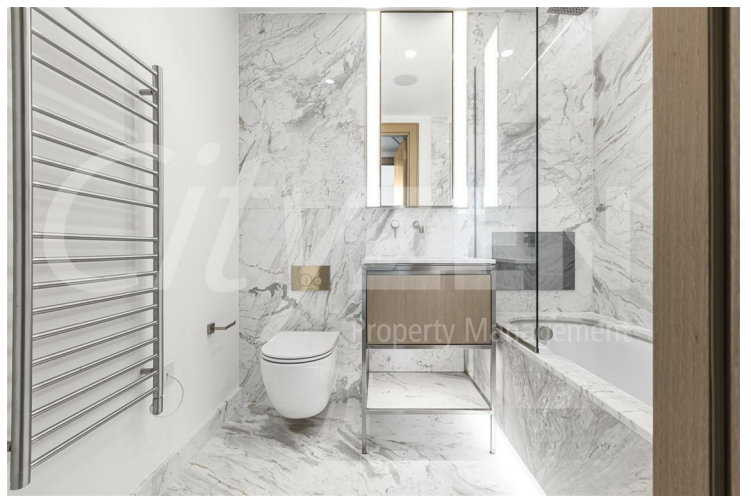
**BEDROOM**



**BEDROOM**



**EN SUITE SHOWER ROOM**



**BATHROOM**



**BEDROOM**



**TERRACE**

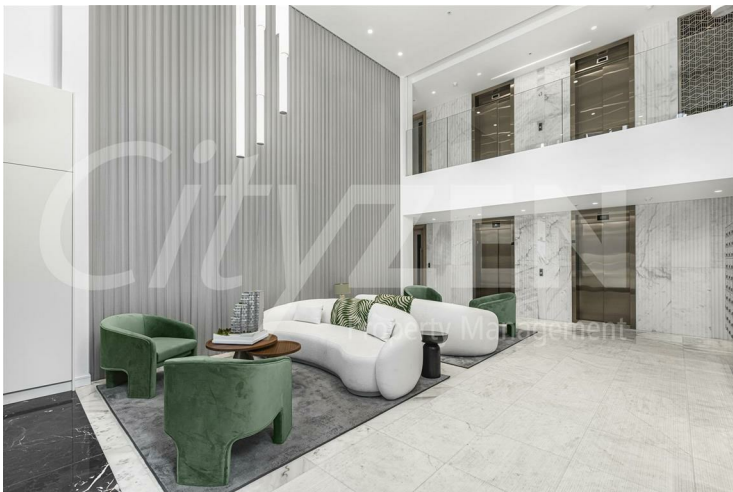
# The Haydon, 16 Minories, London, EC3N 1AX



TERRACE

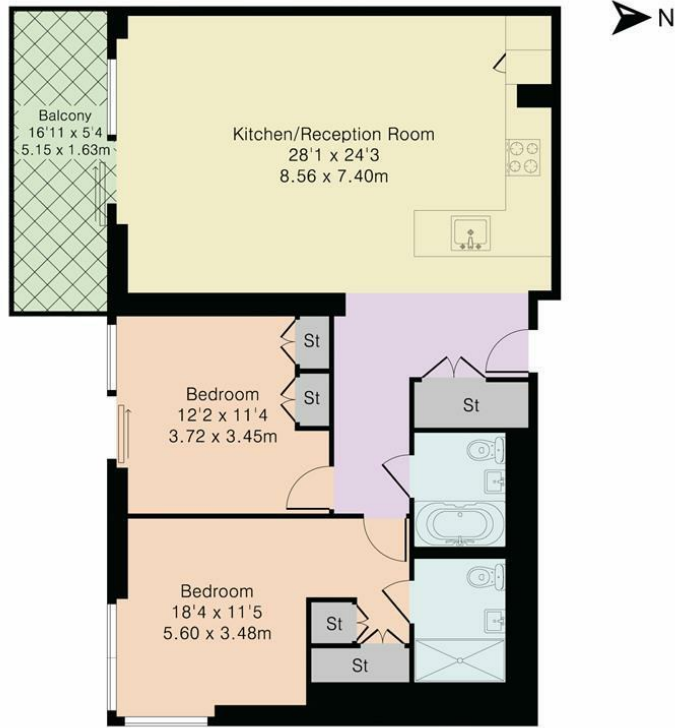


RECEPTION ROOM



LOBBY

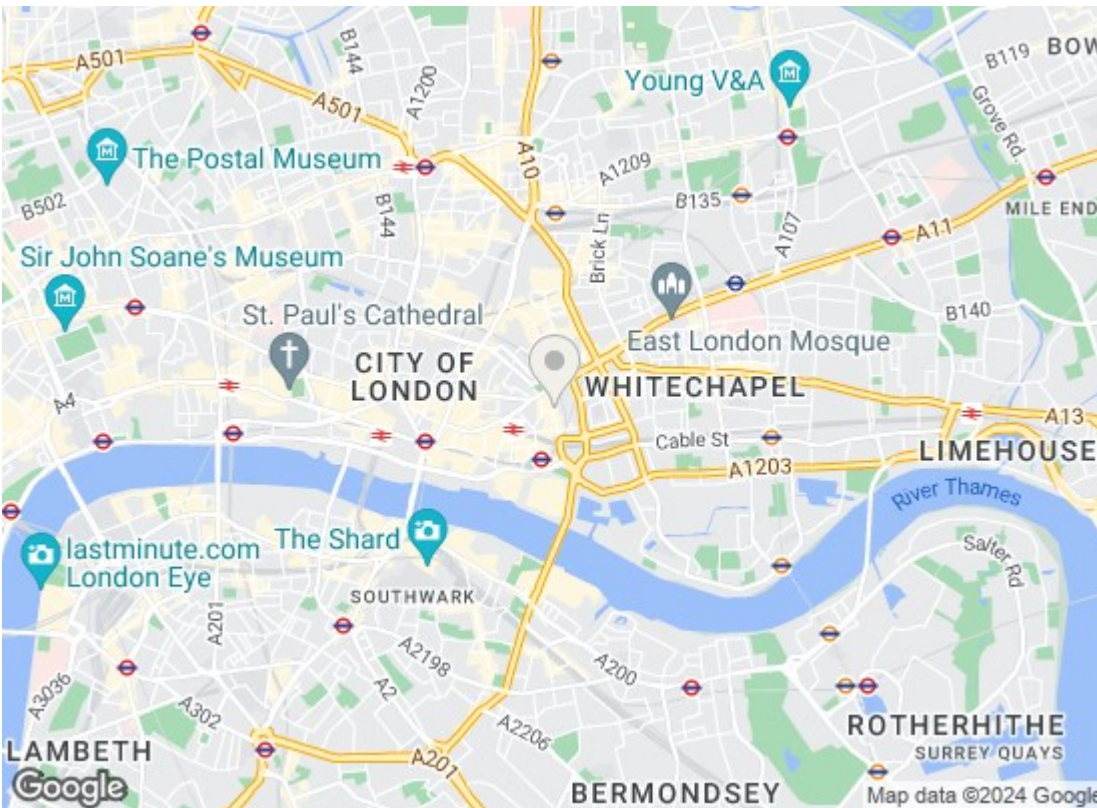
Approximate Gross Internal Area 968 sq ft – 90 sq m



Sixth Floor Flat



Although Pink Plan Ltd ensures the highest level of accuracy, measurements of doors, windows and rooms are approximate and no responsibility is taken for error, omission or misstatement. These plans are for representation purposes only as defined by RICS code of measuring practise. No guarantee is given on total square footage of the property within this plan. The figure icon is for initial guidance only and should not be relied on as a basis of valuation.



Energy Efficiency Rating		
	Current	Potential
Very energy efficient - lower running costs		
(92 plus) <b>A</b>		
(81-91) <b>B</b>	<b>87</b>	<b>87</b>
(69-80) <b>C</b>		
(55-68) <b>D</b>		
(39-54) <b>E</b>		
(21-38) <b>F</b>		
(1-20) <b>G</b>		
Not energy efficient - higher running costs		
EU Directive 2002/91/EC		
Environmental Impact (CO <sub>2</sub> ) Rating		
	Current	Potential
Very environmentally friendly - lower CO <sub>2</sub> emissions		
(92 plus) <b>A</b>		
(81-91) <b>B</b>		
(69-80) <b>C</b>		
(55-68) <b>D</b>		
(39-54) <b>E</b>		
(21-38) <b>F</b>		
(1-20) <b>G</b>		
Not environmentally friendly - higher CO <sub>2</sub> emissions		
EU Directive 2002/91/EC		

We have prepared these property particulars as a general guide to a broad description of the property. They are not intended to constitute part of an offer or contract. We have not carried out a structural survey and the services, appliances and specific fittings have not been tested. All photographs, measurements, floorplans and distances referred to are given as a guide only and should not be relied upon for the purchase of carpets or any other fixtures or fittings. Lease details, service charges and ground rent (where applicable) and council tax are given as a guide only and should be checked and confirmed by your Solicitor prior to exchange of contracts.