



Otten Hall, The Street, Belchamp Otten

Sheridans



Otten Hall, The Street, Belchamp Otten, Sudbury, CO10 7BG

A gracious Grade II listed country house offering elegantly proportioned accommodation complemented by delightful grounds whilst enjoying a quiet country setting.

Understood to have origins dating back to the 16th century and elegantly remodelled in the 18th century, when mostly encased in white gault brick beneath a hipped grey slate roof, Otten Hall is a particularly fine example of Georgian architecture boasting beautifully proportioned rooms retaining many original features including sash windows with original window shutters, high ceilings, panelled internal doors and marble fireplaces. The house stands within beautifully private grounds comprising a gated carriage driveway with original railings, formal lawned gardens, 16th century cart lodge, large pond (part of former moat) and a superb art studio. All in about 1.7 of an acre.

The elegantly proportioned accommodation currently in brief comprises a large reception hall with fine 18th century staircase to first floor and stairs down to the cellars. The study is a fine panelled reception room with fireplace and windows to front and side enjoying views across the front gardens and pond. The formal dining room is an ideal reception for entertaining with fireplace and window to front. The sitting room is a light and airy reception room with fireplace, window to side and French doors to the rear gardens and the snug has a further elegant fireplace and window overlooking the front gardens and pond. The farmhouse style "AGA" kitchen has a brick floor and is fitted with a range of units providing drawer and cupboard space and leads through to the separate breakfast room with large redbrick fireplace, exposed timbers and French doors to the rear gardens. An inner hall with back staircase and a utility room, a cloakroom and rear porch complete the ground floor accommodation.

On the first floor is landing leading to the five large double bedrooms and bathrooms. All the elegant bedrooms have excellent ceiling height and afford stunning views across the grounds and countryside beyond and most retain the original fireplaces. There are two bathrooms. One fine gentleman's bathroom, a further family bathroom, both a wonderfully spacious size with free standing baths and built in cupboards. A shower room and a further separate cloakroom completes the first floor accommodation.

Garden & Grounds

The house is approached through a pair of brick piers and gates opening to a private driveway leading past the front of the house to the 16th century cartlodge and further garaging, carport and old timber frame barn. To the front of the house a large pond and gated carriage driveway with original railings. The formal gardens are mostly laid to lawn and extend to the side and rear of the house, providing an excellent degree of privacy and stocked with a myriad of flowering plants, shrubs and mature trees and fruit trees. To the rear of the house is a large terrace for entertaining and of particular note is the superb 45ft purpose built studio including stylish Bi-fold doors, kitchen area, cloakroom and further outside toilet. All in about 1.7 of an acre.

Setting

Otten Hall enjoys a peaceful and picturesque village setting adjacent to the village church. The pretty village of Belchamp Otten is situated on the Suffolk/Essex border with both a church and public house. The nearby village of Belchamp St Paul offers further facilities including a Church of England primary school with a full range of amenities available at nearby Clare and Sudbury.

Belchamp Otten is a village and civil parish in Essex, England, known for its historical significance, particularly its church and manor house. The village's name is believed to be derived from an early owner named Otto or Otho, with the estate being held by his descendants, including Otho FitzWilliam, by 1200. The parish church, St. Ethelbert and All Saints, has a history spanning centuries, with its nave dating back to the 12th century and additions like the chancel, porch, and chancel arch added later.

Belchamp Otten is situated in the beautiful Stour Valley. A distinctive landscape with many ancient villages that has inspired such famous artists as John Constable and Thomas Gainsborough. The Belchamps are mentioned in the Domesday Book.

Services

Mains electricity, water and drainage. Oil fired radiator central heating

Council tax - Braintree. Band H.

Broadband speed: Up to 1000 mbps available (Source Ofcom)

Mobile phone signal for: Three and O2 (Source Ofcom)





TOTAL FLOOR AREA : 7167 sq.ft. (665.9 sq.m.) approx.

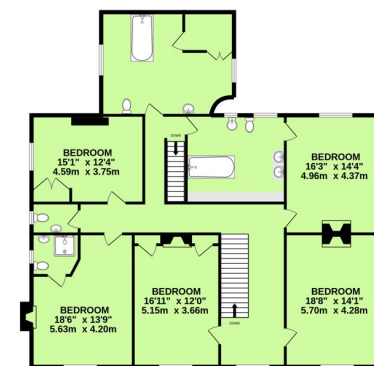
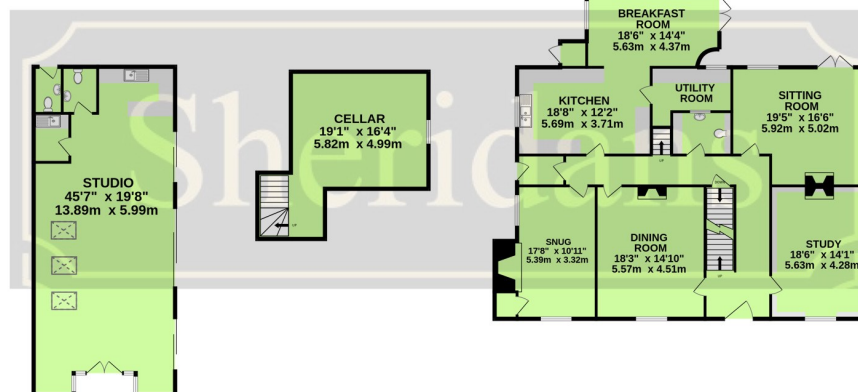
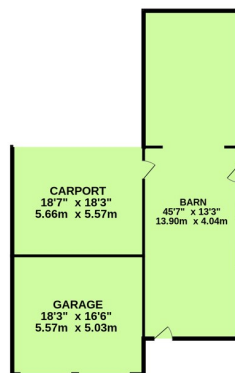
Measurements are approximate. Not to scale. Illustrative purposes only
Made with Metropix ©2025

OUTBUILDINGS
2870 sq.ft. (266.6 sq.m.) approx.

BASEMENT
387 sq.ft. (36.0 sq.m.) approx.

GROUND FLOOR
1956 sq.ft. (181.7 sq.m.) approx.

1ST FLOOR
1954 sq.ft. (181.6 sq.m.) approx.





Sheridans Estate Agents

Web: www.sheridans.ltd.uk **Email:** info@sheridans.ltd.uk

Bury St. Edmunds Office
19 Langton Place, Bury St. Edmunds
Suffolk, IP33 1NE
Tel: 01284 700 018

Knightsbridge London Office
45 Pont Street
London, SW1X 0BD
Tel: 020 7629 9966

Registered office: Sheridans Limited, 19 Langton Place, Bury St. Edmunds, Suffolk, IP33 1NE

Registered in England No. 04461290

VAT Number: 794 915 378



Sheridans