



Hednesford Road | Rugeley | WS15 1JP

£1,100 PCM

 **Webbs**  
estate agents



## Summary

Webbs Estate Agents are delighted to present this spacious three-bedroom detached dormer bungalow, located on Hednesford Road, Rugeley. Ideally positioned close to a range of local amenities including shops, supermarkets, popular schools, medical facilities, and excellent transport links.

The accommodation briefly comprises: entrance hallway, lounge, kitchen, three bedrooms and bathroom.

Externally, the property boasts a large rear garden and driveway parking.

## Key Features

### Rooms and Dimensions

#### PROPERTY DETAILS

#### THROUGH HALLWAY

#### LOUNGE

12'9" x 12'7" (3.89m x 3.84m)

#### REFITTED KITCHEN DINER

10'10" x 10'6" (3.32m x 3.22m)

#### GUEST WC

#### FAMILY BATHROOM

#### BEDROOM ONE

10'11" x 9'3" (3.33m x 2.83m)

#### BEDROOM TWO

10'6" x 10'3" (3.22m x 3.14m)

#### BEDROOM THREE

9'8" x 8'7" (2.96m x 2.64m)

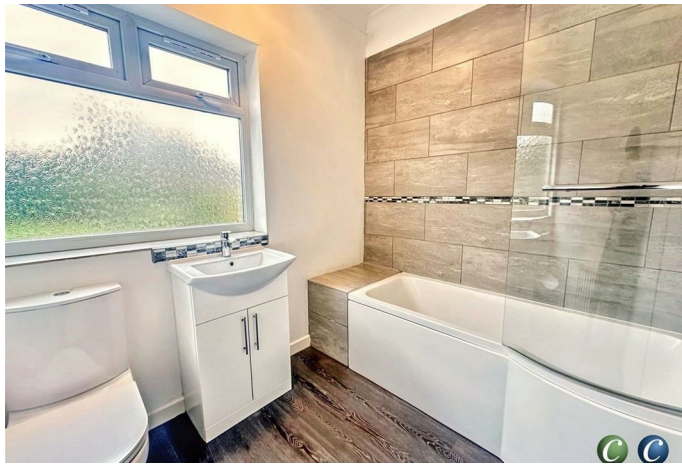
#### GENEROUS REAR GARDEN

#### PRIVATE DRIVEWAY

#### TENANCY INFORMATION & IMPORTANT NOTES

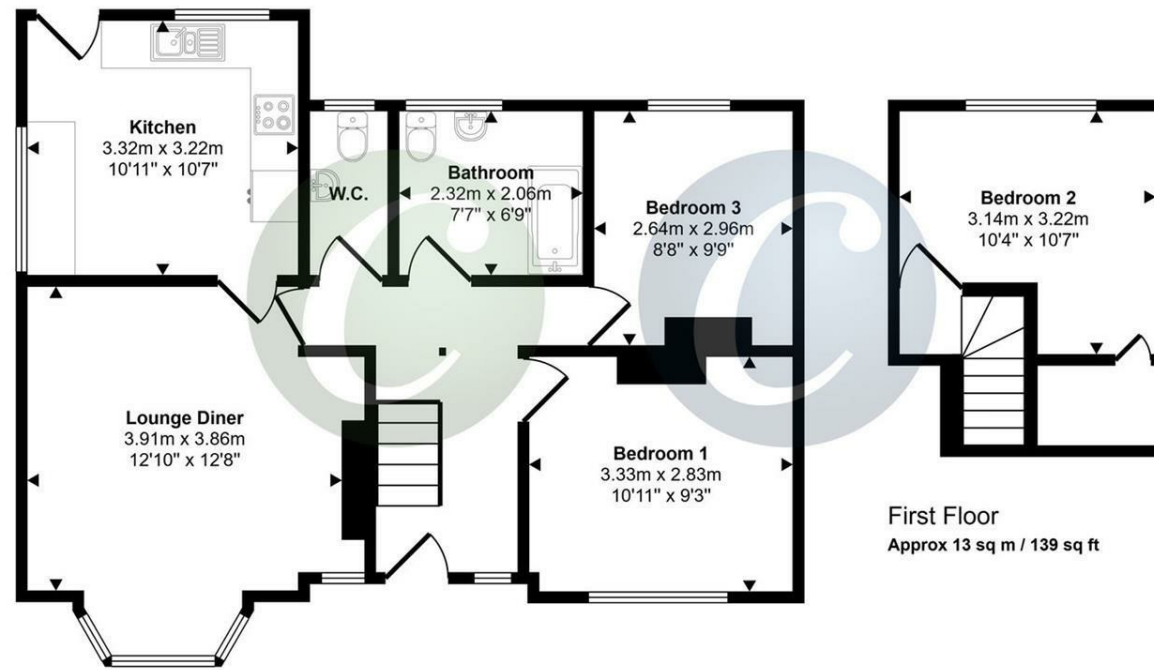








Approx Gross Internal Area  
75 sq m / 810 sq ft

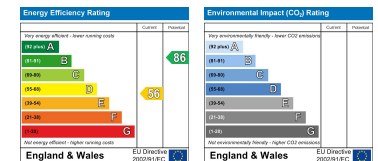


First Floor  
Approx 13 sq m / 139 sq ft

Ground Floor  
Approx 62 sq m / 671 sq ft

This floorplan is only for illustrative purposes and is not to scale. Measurements of rooms, doors, windows, and any items are approximate and no responsibility is taken for any error, omission or mis-statement. Icons of items such as bathroom suites are representations only and may not look like the real items. Made with Made Snappy 360.

Webbs Estate Agents - endeavour to maintain accurate depictions of properties in Virtual Tours, Floor Plans and descriptions, however, these are intended only as a guide and purchasers must satisfy themselves by personal inspection.



153 Avon Road, Cannock, WS11 1LF

Tel: 01543 468846 | Email: [sales@webbestateagents.co.uk](mailto:sales@webbestateagents.co.uk) | [www.webbestateagents.co.uk](http://www.webbestateagents.co.uk)

**Webbs**  
estate agents