



Webbs

Helping people move since 1994

Plant Valley Glade | Cheslyn Hay, Walsall | WS6 7FF

Offers In The Region Of £425,000

 **Webbs**
estate agents

Summary

The Willow by Cameron Homes with a Stunning Landscaped Garden

Welcome to Wood Heath, an exciting development by Cameron Homes. The Willow is a stylish four-bedroom detached home offering high-quality finishes throughout and a beautifully landscaped rear garden.

A spacious entrance hall leads to an impressive open-plan kitchen, dining and family area with Zanussi integrated appliances and French doors opening to the garden—perfect for entertaining. A separate lounge with feature wooden panelling provides a cosy retreat.

Upstairs, the master bedroom boasts fitted wardrobes and an en-suite shower room. Three further bedrooms offer versatile space for children, guests or a home office, complemented by a family bathroom finished with Porcelanosa tiling.

Designed for modern living, The Willow features enhanced insulation, smart temperature controls, energy-efficient lighting and appliances, plus low-flush sanitaryware and a waste-water heat recovery

Key Features

- STUNNING STUNNING STUNNING
- FOUR GENEROUS BEDROOMS
- SOUGHT AFTER LOCATION
- EN-SUITE SHOWER ROOM
- DETACHED SINGLE GARAGE AND DRIVEWAY
- MODERN DETACHED FAMILY HOME
- SPACIOUS LOUNGE
- ENVIABLE KITCHEN AND DINING ROOM
- STUNNING LANDSCAPED REAR GARDEN
- VIEWING STRONGLY ADVISED

Rooms and Dimensions

ENTRANCE HALLWAY

GUEST WC

SPACIOUS LOUNGE

15'9" x 10'11" (4.81 x 3.34)

DINING AREA

13'6" x 11'9" (4.13 x 3.59)

STUNNING MODERN KITCHEN AREA

10'11" x 10'6" (3.34 x 3.21)

LANDING

BEDROOM ONE

12'11" x 10'11" (3.94 x 3.34)

EN-SUITE SHOWER ROOM

BEDROOM TWO

11'7" x 9'5" (3.54 x 2.88)

BEDROOM THREE

10'11" x 11'9" (3.34 x 3.59)

BEDROOM FOUR

10'0" x 7'6" (3.06 x 2.31)

FAMILY BATHROOM

STUNNING LANDSCAPED REAR GARDEN

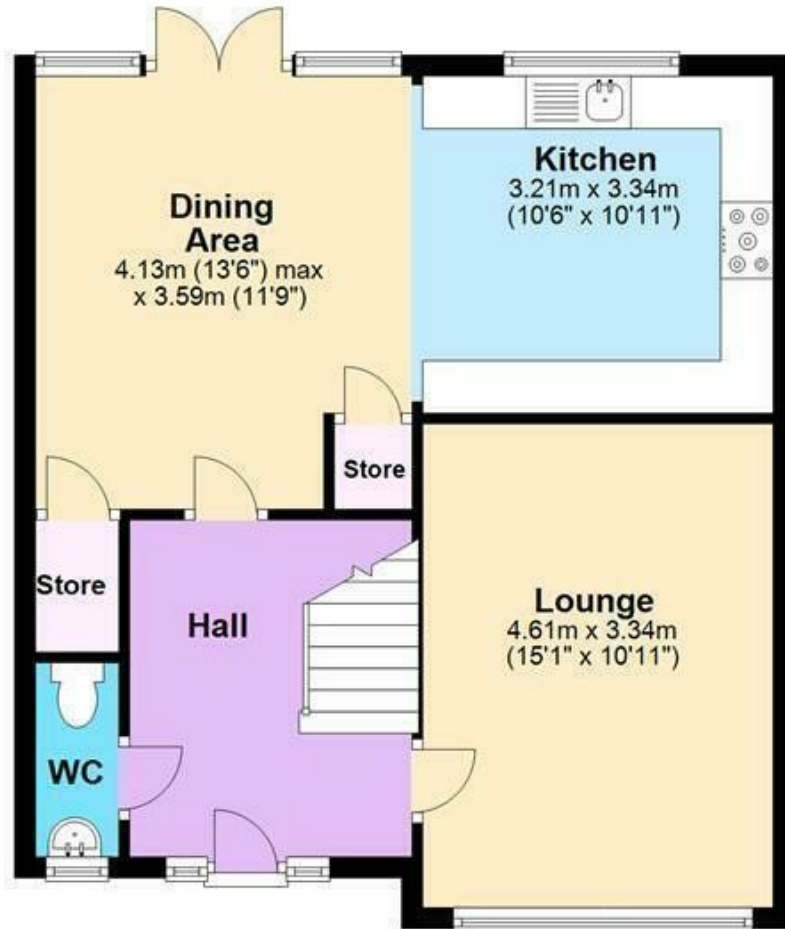
DETACHED GARAGE AND DRIVEWAY

IDENTIFICATION CHECKS - C

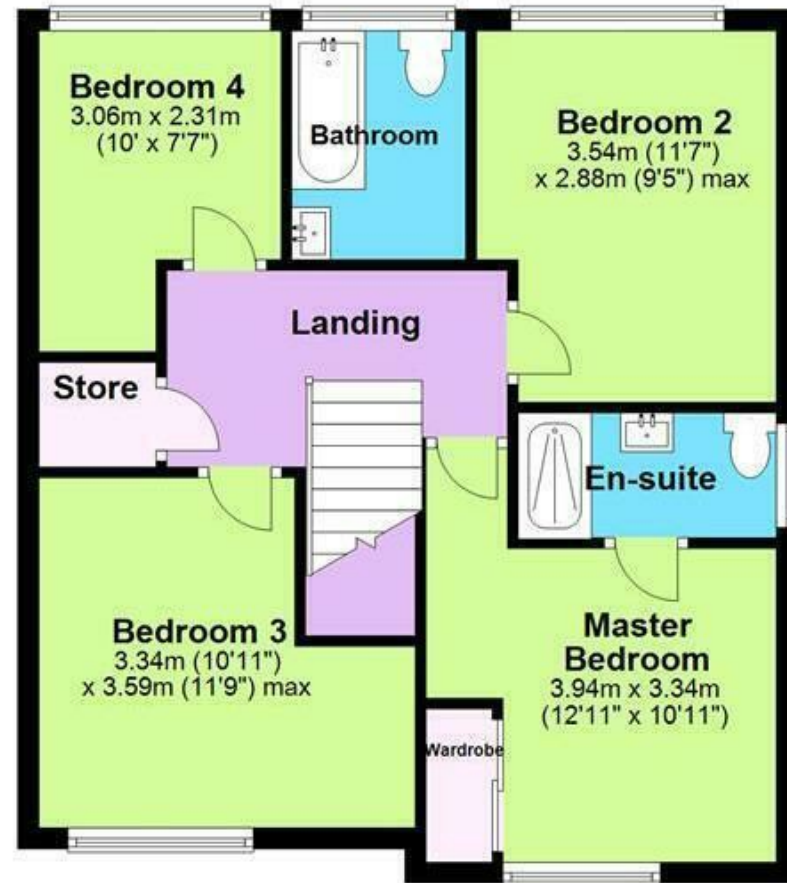




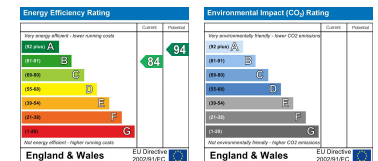
Ground Floor



First Floor



Webbs Estate Agents - endeavour to maintain accurate depictions of properties in Virtual Tours, Floor Plans and descriptions, however, these are intended only as a guide and purchasers must satisfy themselves by personal inspection.



153 Avon Road, Cannock, WS11 1LF

Tel: 01543 468846 | Email: sales@webbestateagents.co.uk | www.webbestateagents.co.uk