



Webbs
Helping people move since 1994

Lodge View | Cheslyn Hay, Walsall | WS6 7JG

Offers In The Region Of £240,000

 **Webbs**
estate agents

Summary

**** ENVIABLE SIZED CORNER PLOT ** THREE BEDROOMS ** EXCELLENT SCHOOL CATCHMENTS ** LARGE LOUNGE ** SPACIOUS KITCHEN DINER ** FRONT, SIDE AND REAR GARDENS ** PERFECT FOR EXTENDING SUBJECT TO PLANNING ** EXCELLENT TRANSPORT LINKS ** QUIET CUL-DE-SAC ** VIEWING ESSENTIAL ** CHAIN FREE ****

Webbs Estate Agents are pleased to offer for sale a spacious end terraced home sitting on an enviable corner plot which offers an excellent opportunity to extend, subject to planning permission, close to excellent schools, transport links, local shops and amenities.

In brief, consisting of an entrance hallway, a spacious lounge, and a large breakfast kitchen, to the first floor, there are three generous bedrooms and a family bathroom. Externally, the property has a large rear, side and front garden with ample off-road parking via driveway and a garage. EARLY VIEWING ADVISED TO AVOID DISAPPOINTMENT, THE PROPERTY IS CHAIN FREE.

Key Features

- LARGE CORNER PLOT IDEAL FOR EXTENTION SUBJECT TO PLANNING
- SHOWER ROOM
- FRONT, SIDE AND REAR GARDENS
- SPACIOUS KITCHEN DINER
- IDEAL FOR LOCAL AMENITIES
- THREE BEDROOMS
- GARAGE AND DRIVEWAY
- LARGE LOUNGE
- EXCELLENT SCHOOLS AND TRANSPORT LINKS
- EARLY VIEWING ESSENTIAL

Rooms and Dimensions

ENTRANCE PORCH AND HALLWAY

SPACIOUS LOUNGE

17'8" x 9'11" (5.397 x 3.033)

LARGE KITCHEN DINER

18'8" x 8'6" (5.711 x 2.609)

GUEST WC

LANDING

BEDROOM ONE

12'0" x 11'6" (3.670 x 3.512)

BEDROOM TWO

11'5" x 10'4" (3.493 x 3.168)

BEDROOM THREE

7'9" x 6'11" (2.374 x 2.116)

SHOWER ROOM

8'5" x 5'1" (2.566 x 1.559)

GARAGE

17'9" x 9'9" (5.412 x 2.975)

FRONT, SIDE AND REAR GARDEN

BRICK OUTBUILDING

IDENTIFICATION CHECKS - C





Webbs
Helping people move since 1994



Webbs
Helping people move since 1994



Webbs
Helping people move since 1994



Webbs
Helping people move since 1994

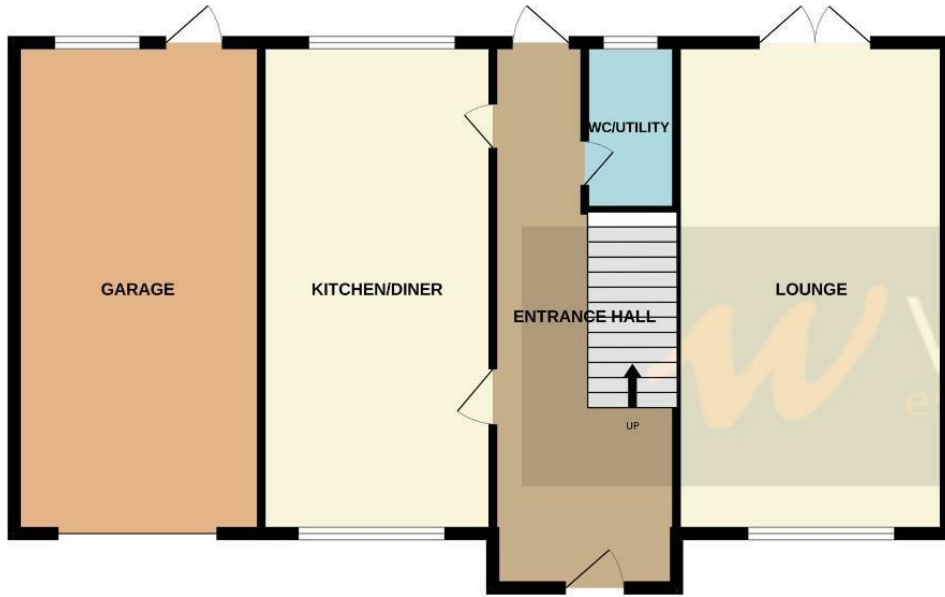


Webbs
Helping people move since 1994



Webbs
Helping people move since 1994

GROUND FLOOR



1ST FLOOR



Whilst every attempt has been made to ensure the accuracy of the floorplan contained here, measurements of doors, windows, rooms and any other items are approximate and no responsibility is taken for any error, omission or mis-statement. This plan is for illustrative purposes only and should be used as such by any prospective purchaser. The services, systems and appliances shown have not been tested and no guarantee as to their operability or efficiency can be given.
Made with Metropix ©2025

Webbs Estate Agents - endeavour to maintain accurate depictions of properties in Virtual Tours, Floor Plans and descriptions, however, these are intended only as a guide and purchasers must satisfy themselves by personal inspection.

