



High Street | Walsall | WS3 3JT

£1,000 PCM

## Summary

Exceptional Retail Opportunity in a Prime Bloxwich Location - Webbbs Estate Agents are thrilled to present this self-contained retail unit in the heart of Bloxwich. Located on the bustling High Street, this prime spot offers excellent visibility and high foot traffic, providing an ideal foundation for a successful and growing business.

Previously operating as a showroom, the space boasts a flexible layout, making it suitable for a variety of uses and adaptable to meet the needs of different business types.

With negotiable lease terms, this is a fantastic opportunity to secure a presence in one of Bloxwich's most prominent high street locations and take your business to the next level.

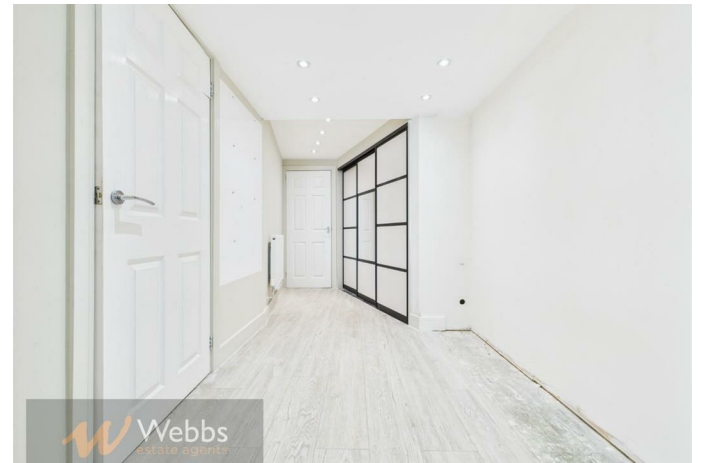
The premises include:

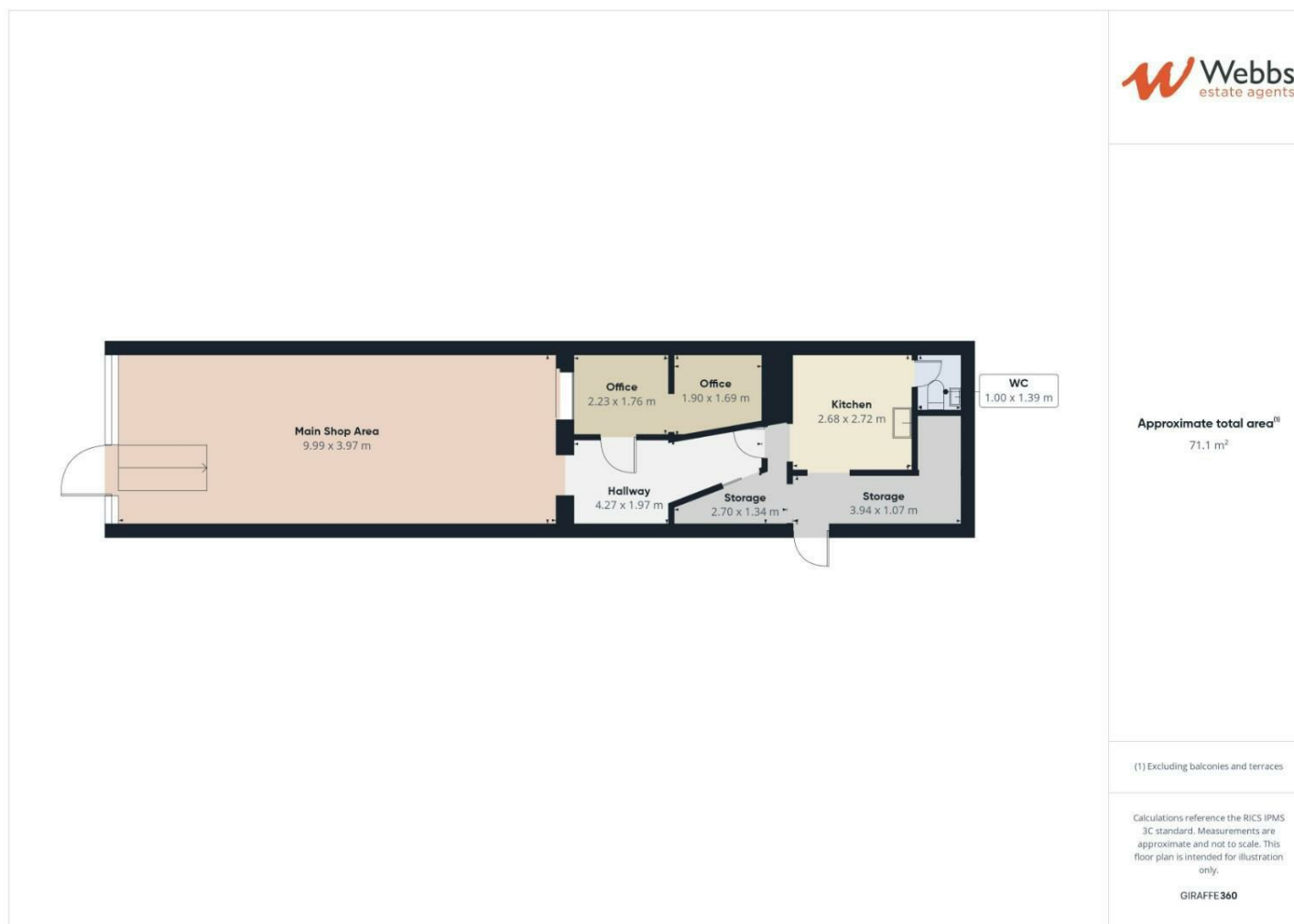
- Spacious main sales area with fantastic retail frontage

## Key Features

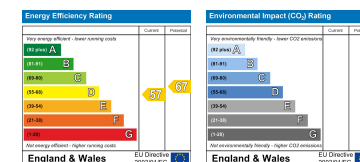
## Rooms and Dimensions







Webbs Estate Agents - endeavour to maintain accurate depictions of properties in Virtual Tours, Floor Plans and descriptions, however, these are intended only as a guide and purchasers must satisfy themselves by personal inspection.



153 Avon Road, Cannock, WS11 1LF

Tel: 01543 468846 | Email: [sales@webbestateagents.co.uk](mailto:sales@webbestateagents.co.uk) | [www.webbestateagents.co.uk](http://www.webbestateagents.co.uk)

**Webbs**  
estate agents