



Webbs
Helping people move since 1994

Tower View Road | Great Wyrley, Walsall | WS6 6HF
Offers Around £135,000

 **Webbs**
estate agents

Summary

**** WOW ** EXCEPTIONAL TWO BED FIRST FLOOR APARTMENT **DECEPTIVELY SPACIOUS ** REFITTED KITCHEN ** REFITTED BATHROOM ** DOUBLE BEDROOMS ** LEASE WILL BE EXTENDED ****

WEBBS ESTATE AGENTS are delighted to welcome to market the beautiful Tower view road . Prepare to have your breath taken away this property is truly unique . Tower view road offers you the perfect blend of space, style and convenience. Every room has been lovingly designed and decorated . There is a plethora of space giving you plenty of versatility. The property briefly comprises of a great sized landing good sized lounge/diner, refitted kitchen, refitted bathroom, two double bedrooms .

EXTERNALLY

Tower view road is nestled in the heart of the delightful hamlet Great Wyrley . All shops and your local amenities are just short stroll form your door. There is ample communal parking for vendors and visitors . All major transport links are within easy reach .

**** VIEWING IS ESSENTIAL TO APPRECIATE THE SIZE, LOCATION AND CONDITION ****

Key Features

- FIRST FLOOR APARTMENT
- REFITTED KITCHEN
- SPACIOUS HOME
- WALKING DISTANCE TO LOCAL AMENITIES
- VENDORS EXTENDING CURRENT LEASE TERM
- DOUBLE BEDROOMS
- REFITTED BATHROOM
- COMMUNAL PARKING
- HIGHLY DESIRABLE LOCATION

Rooms and Dimensions

ENTRANCE PORCH

ENTRANCE HALLWAY

LOUNGE/DINER

17'11" x 18'11" (5.470 x 5.783)

KITCHEN

8'1" x 7'0" (2.479 x 2.139)

FAMILY BATHROOM

8'2" x 6'4" (2.493 x 1.945)

BEDROOM ONE

10'3" x 14'2" (3.132 x 4.335)

BEDROOM TWO

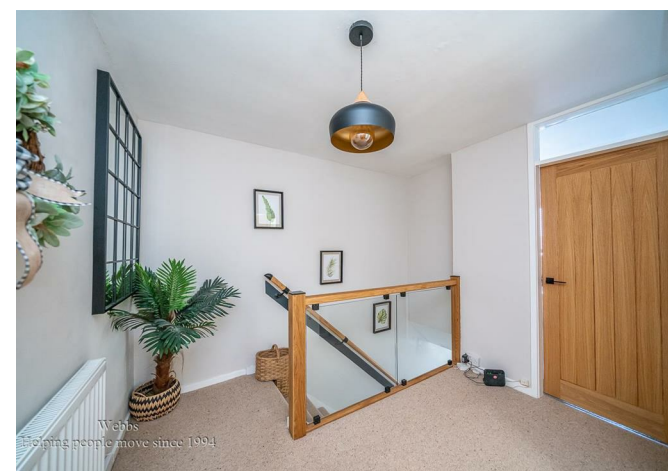
8'2" x 11'2" (2.490 x 3.418)

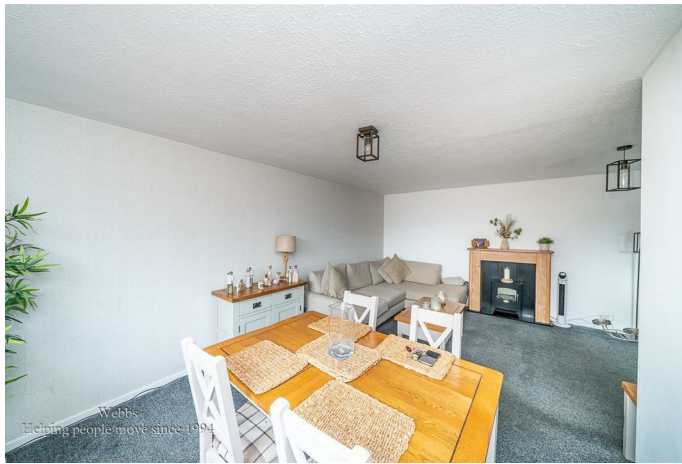
EXTERNALLY

COMMUNAL PARKING

IDENTIFICATION CHECKS - C

Agents Note C





Webbs Estate Agents - endeavour to maintain accurate depictions of properties in Virtual Tours, Floor Plans and descriptions, however, these are intended only as a guide and purchasers must satisfy themselves by personal inspection.

