



Harvest Close | Brewood | ST19 9FF

£1,100 PCM

 **Webbs**
estate agents

Summary

Webbs Estate Agents are thrilled to bring to market this immaculately presented semi detached home on the attractive Somerford Park development, settled in South Staffordshire in the picturesque and much sought after village location of Brewwood,

The village benefits from local shops and amenities and boasts access to major transport links such as the M6, M54 and M6 Toll.

This beautiful two bedroom home briefly comprises of; entrance hallway, a stunning kitchen/diner with a range of integrated appliances, a generous living room with French doors leading onto the garden and WC to the ground floor.

To the first floor, two double bedrooms and a contemporary bathroom with shower over.

Externally there is large enclosed low maintenance rear garden with patio seating area. To the side, there is off road parking for two vehicles. The property also benefits from an electric vehicle charging point, making this home perfect for modern living.

Key Features

Rooms and Dimensions

PROPERTY DETAILS

Lounge

14'7" x 10'4" (4.460m x 3.15m)

Kitchen/Diner

15'4" x 7'9" (4.695 x 2.375)

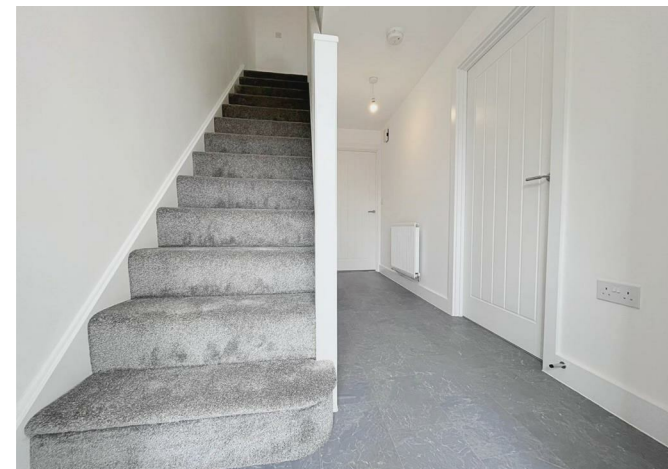
Bedroom One

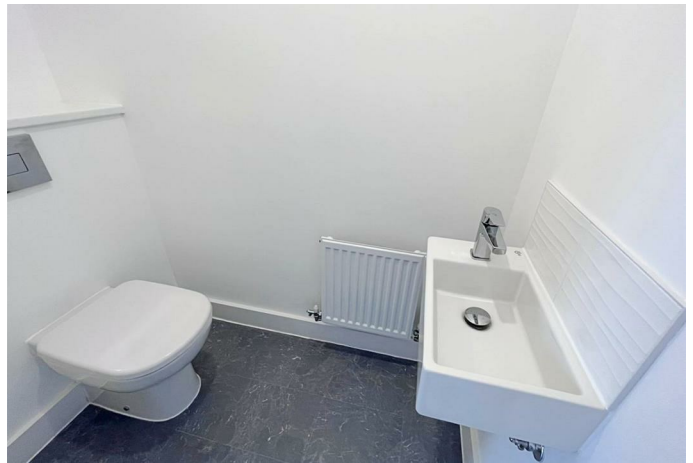
14'7" x 10'4" (4.460 x 3.160)

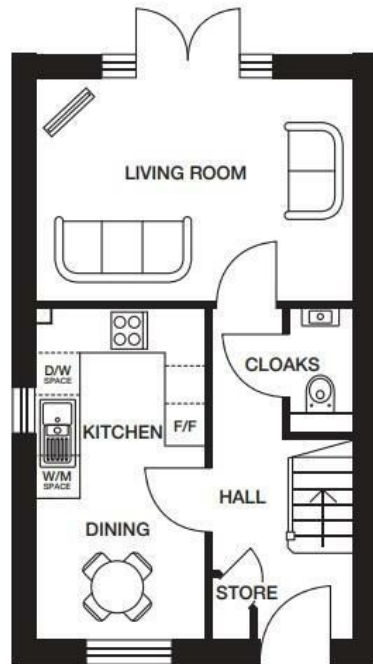
Bedroom Two

14'7" x 8'5" (4.460 x 2.585)

Please Note

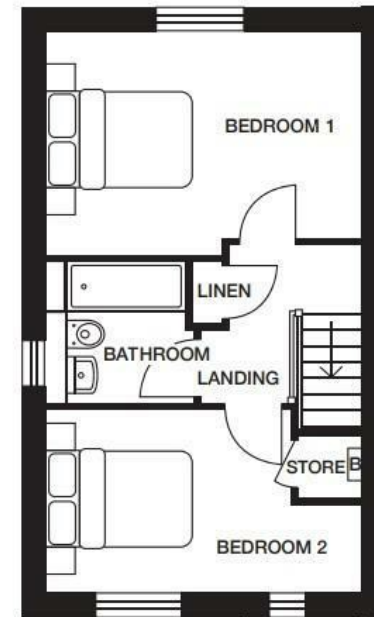






Ground Floor

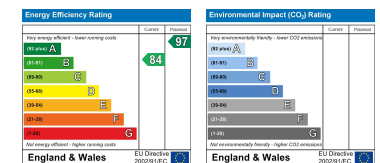
Living Room 4460mm x 3160mm 14'8" x 10'4"
 Kitchen/Dining 4695mm x 2375mm 15'4" x 7'9"
 Cloaks 1770mm x 900mm 5'9" x 2'11"



First Floor

Bedroom 1 4460mm x 3160mm 14'8" x 10'4"
 Bedroom 2 2585mm x 4460mm 8'5" x 14'8"
 Bathroom 2091mm x 2017mm 6'10" x 6'7"

Webbs Estate Agents - endeavour to maintain accurate depictions of properties in Virtual Tours, Floor Plans and descriptions, however, these are intended only as a guide and purchasers must satisfy themselves by personal inspection.



153 Avon Road, Cannock, WS11 1LF

Tel: 01543 468846 | Email: sales@webbestateagents.co.uk | www.webbestateagents.co.uk