



Webbs

Helping people move since 1994

Greenslade Grove | Hednesford, Cannock | WS12 1QR
Offers Over £110,000

 Webbs
estate agents

Summary

**** FIRST FLOOR APARTMENT ** TWO DOUBLE BEDROOMS ** LARGE LOUNGE DINER ** SHOWER ROOM ** MODERN KITCHEN ** COMMUNAL GARDENS AND PARKING ** CLOSE TO CANNOCK CHASE ** EARLY VIEWING ADVISED ** LOW GROUND RENT & SERVICE CHARGES ** 64 YEARS LEFT ON THE LEASE ****

Webbs Estate Agents are pleased to offer for sale a spacious first-floor two-bedroom apartment, close to Cannock Chase, Hednesford Town Centre and Train Station, this is only a stone's throw away from Hednesford Park.

In brief consisting of an entrance hallway with stairs leading up to the first floor accommodation, the property has a large lounge diner, modern kitchen, shower room and two generous bedrooms, communal gardens and parking complete the property details.

EARLY VIEWING ADVISED TO AVOID DISAPPOINTMENT

Key Features

- HIGHLY DESIRABLE LOCATION
- SHOWER ROOM
- LARGE LOUNGE DINER
- FIRST FLOOR
- EARLY VIEWING ADVISED
- CLOSE TO CANNOCK CHASE
- TWO BEDROOMS
- MODERN KITCHEN
- CLOSE TO LOCAL SHOPS AND AMENITIES

Rooms and Dimensions

Awaiting approval

ENTRANCE LEADING TO THE FIRST FLOOR

SPACIOUS LOUNGE

11'5" x 14'2" (3.50 x 4.32)

MODERN KITCHEN

9'10" x 9'3" (3.02 x 2.84)

BEDROOM ONE

10'8" x 8'11" (3.26 x 2.74)

BEDROOM TWO

9'4" x 9'3" (2.87 x 2.82)

SHOWER ROOM

6'7" x 5'3" (2.02 x 1.61)

COMMUNAL GARDENS AND PARKING SPACES

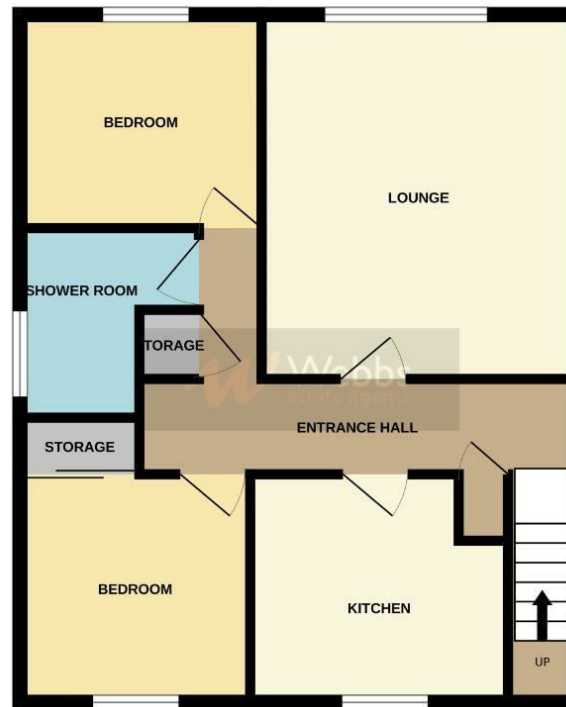
Identification checks - C

Agents Note C





GROUND FLOOR



Whilst every attempt has been made to ensure the accuracy of the floorplan contained here, measurements of doors, windows, rooms and any other items are approximate and no responsibility is taken for any error, omission or mis-statement. This plan is for illustrative purposes only and should be used as such by any prospective purchaser. The services, systems and appliances shown have not been tested and no guarantee as to their operability or efficiency can be given.
Made with Metagix C32025

Webbs Estate Agents endeavour to maintain accurate depictions of properties in Virtual Tours, Floor Plans and descriptions, however, these are intended only as a guide and purchasers must satisfy themselves by personal inspection.

