



Mary Elizabeth Court | Cannock | WS12 2EH

£750 PCM



Summary

Webbs Estate Agents are delighted to offer to let this well presented first floor apartment, ideally situated in the heart of the popular village of Heath Hayes. With its excellent proximity to the local high street, you'll find an array of shops, cafes, and amenities just a short walk away.

The property offers spacious and modern accommodation, briefly comprising of: entrance hallway, open plan lounge/kitchen, two bedrooms and bathroom. With electric heating, double glazing and residents parking.

The apartment is also ideally located for quick access to major road networks, including the A5, A34, and M6, ensuring easy commutes to nearby towns and cities.

Unfortunately, pets and smokers are not considered at this time.

Key Features

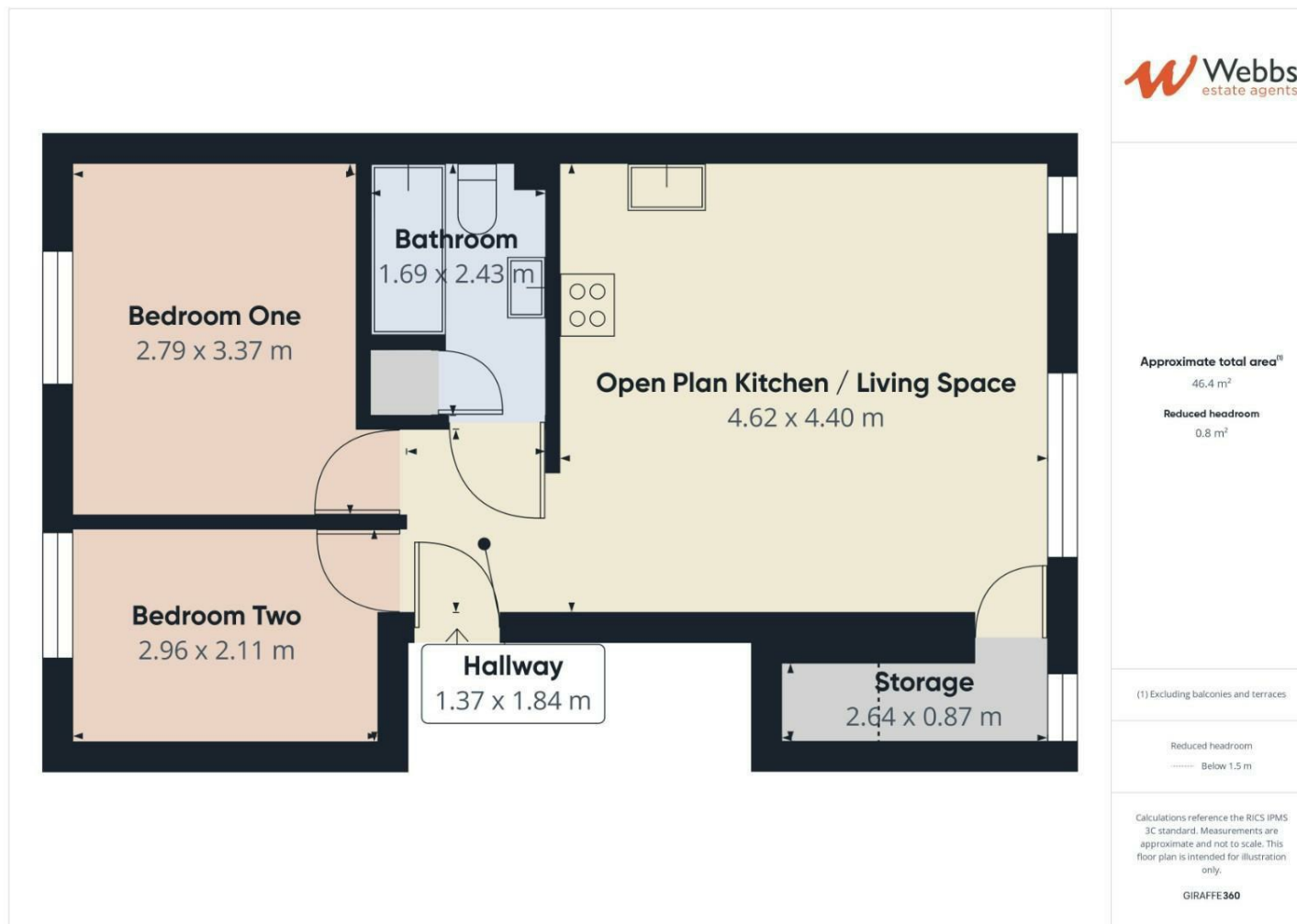
Rooms and Dimensions

PROPERTY DETAILS:

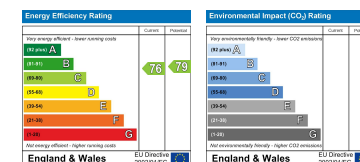
Please Note







Webbs Estate Agents - endeavour to maintain accurate depictions of properties in Virtual Tours, Floor Plans and descriptions, however, these are intended only as a guide and purchasers must satisfy themselves by personal inspection.



153 Avon Road, Cannock, WS11 1LF

Tel: 01543 468846 | Email: sales@webbestateagents.co.uk | www.webbestateagents.co.uk

Webbs
estate agents