



BRITISH
PROPERTY
AWARDS

2022 - 2023

★★★★★

GOLD WINNER

LETTING AGENT
IN CANNOCK

Southbourne Place | Cannock | WS11 4SA

£950 PCM

 **Webbs**
estate agents

Summary

Webbs Estate Agents are thrilled to offer to let this deceptively spacious dormer bungalow, situated in a quiet cul-de-sac location within walking distance to Cannock town centre and local amenities.

In brief, this lovely home comprises of; a lounge, breakfast kitchen, ground-floor bedroom and bathroom, two further first-floor bedrooms, and a shower room.

The property further benefits from an external office cabin with lighting and power points.

With off-road parking to the front and a delightful enclosed garden to the rear.

Key Features

Rooms and Dimensions

PROPERTY DETAILS:

Lounge

11'9" x 12'1" (3.6 x 3.7)

Kitchen

14'9" x 6'10" (4.5 x 2.1)

Bathroom (Downstairs)

6'5" x 5'7" (1.96 x 1.72)

Bedroom (Downstairs)

11'9" x 6'5" (3.6 x 1.96)

Bedroom

8'2" x 9'2" (2.49 x 2.8)

Bedroom

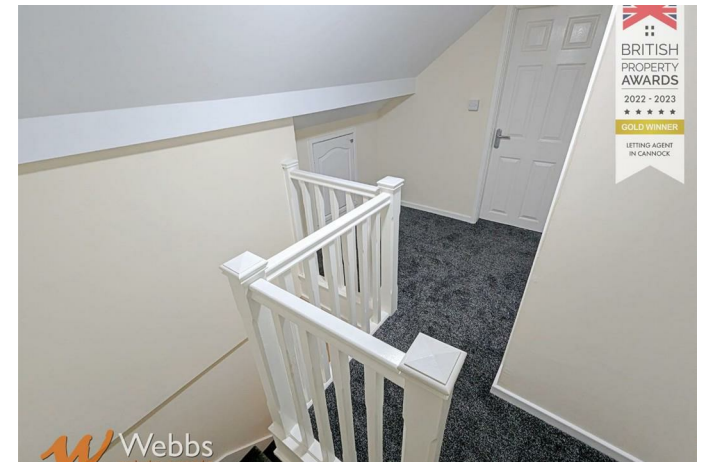
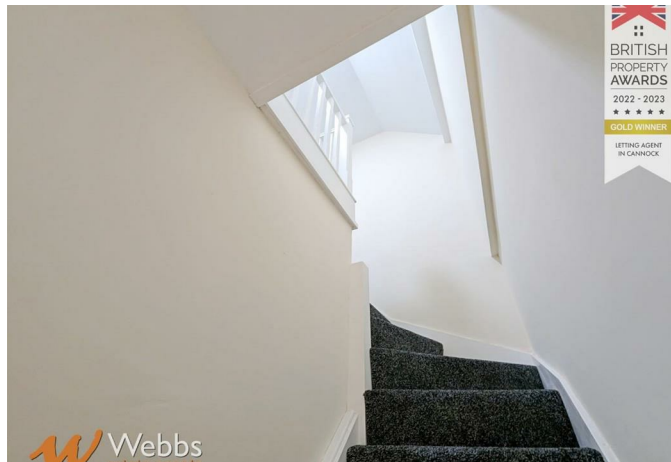
9'1" x 9'2" (2.78 x 2.8)

Bathroom

6'6" x 6'2" (2.0 x 1.9)

Please Note





Webbs Estate Agents - endeavour to maintain accurate depictions of properties in Virtual Tours, Floor Plans and descriptions, however, these are intended only as a guide and purchasers must satisfy themselves by personal inspection.

