



 Webbs

Queen Street | Burntwood | WS7 4QQ

£950 PCM

 **Webbs**  
estate agents



## Summary

Webbs Estate Agents are pleased to offer this two bedroom semi detached house to the market. Being close to all local amenities, shops and schools and offering spacious accommodation throughout.

Briefly comprising: hallway, lounge, kitchen diner, two double bedrooms and bathroom. Externally there is a private enclosed rear garden, block paved driveway for two vehicles.

Contact Webbs Estate Agents to arrange a viewing appointment.

## Key Features

## Rooms and Dimensions

### PROPERTY DETAILS:

#### Lounge

14'0" x 11'8" (4.29 x 3.58)

#### WC

#### Kitchen Diner

13'10" x 9'10" (4.24 x 3.00)

#### Landing

#### Bedroom One

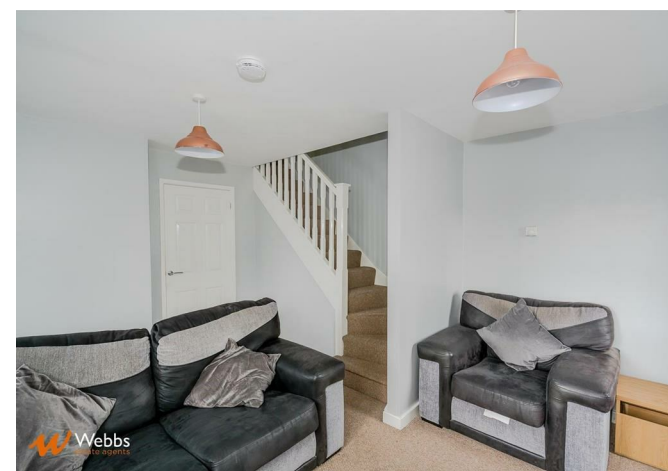
11'8" x 11'2" (3.58 x 3.42)

#### Bedroom Two

13'9" x 9'10" (4.20 x 3.00)

#### Bathroom

#### Please Note





Webbs Estate Agents - endeavour to maintain accurate depictions of properties in Virtual Tours, Floor Plans and descriptions, however, these are intended only as a guide and purchasers must satisfy themselves by personal inspection.

