



Chapel Street | Cannock | WS12 3HE

£900 PCM

 **Webbs**
estate agents

Summary

Webbs estate agents are delighted to offer a fully renovated, traditional two bedroom semi detached house ideally located in the popular residential village of Heath Hayes. The property is located close to amenities, schools and public transport routes.

In brief, downstairs the accommodation comprises of a spacious lounge, newly fitted kitchen, utility area, office area and modern ground floor bathroom and upstairs you'll find two double bedrooms. The property boasts a garden* to rear and on road parking.

Available now – early viewing is highly recommended.

Contact Webbs Estate Agents today to arrange your viewing.

*Garden not photographed and still undergoing work.

Key Features

Rooms and Dimensions

PROPERTY DETAILS:

Kitchen

7'10" x 9'11" (2.41 x 3.03)

Living Room

11'4" x 12'4" (3.47 x 3.76)

Large Hall

6'11" x 11'2" (2.12 x 3.42)

Bathroom

3'10" x 7'8" (1.19 x 2.34)

Bedroom One

11'5" x 12'5" (3.50 x 3.81)

Bedroom Two

11'5" x 11'3" (3.48 x 3.44)

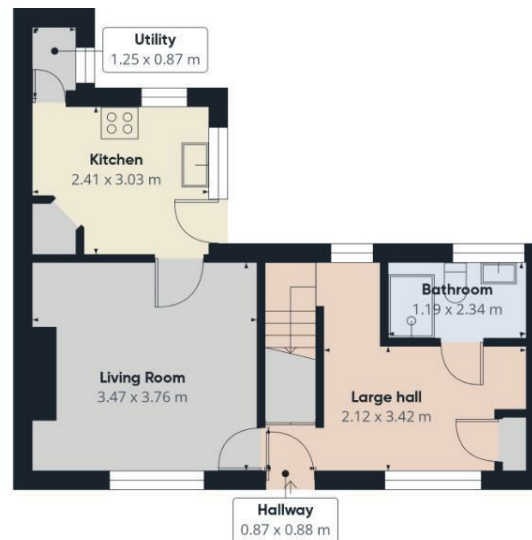
Please Note



**SWITCH TO
AN AWARD
WINNING AGENT**

2024 - 2025
★★★★★
GOLD WINNER
LETTING AGENT
IN CANNOCK





Ground Floor



Floor 1



Approximate total area⁽¹⁾
61 m²

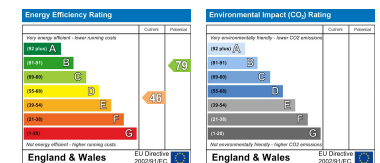
(1) Excluding balconies and terraces

While every attempt has been made to ensure accuracy, all measurements are approximate, not to scale. This floor plan is for illustrative purposes only.

Calculations were based on RICS IPMS 3C standard. Please note that calculations were adjusted by a third party and therefore may not comply with RICS IPMS 3C.

GIRAFFE360

Webbs Estate Agents - endeavour to maintain accurate depictions of properties in Virtual Tours, Floor Plans and descriptions, however, these are intended only as a guide and purchasers must satisfy themselves by personal inspection.



153 Avon Road, Cannock, WS11 1LF

Tel: 01543 468846 | Email: sales@webbsestateagents.co.uk | www.webbestateagents.co.uk

